

014 Aluminum ballast structure

FR-A-B-US-EW/H/LA/MAX-LONG-X

TYPE OF CONSTRUCTION

Universal (US)

DIRECTION OF MODULES

East-West (EW)

MODULE LAYOUT

Horizontal (H)

ASSEMBLY METHOD

Long Side (LA)

MAX PV MODULE LENGTH

Individual (X)



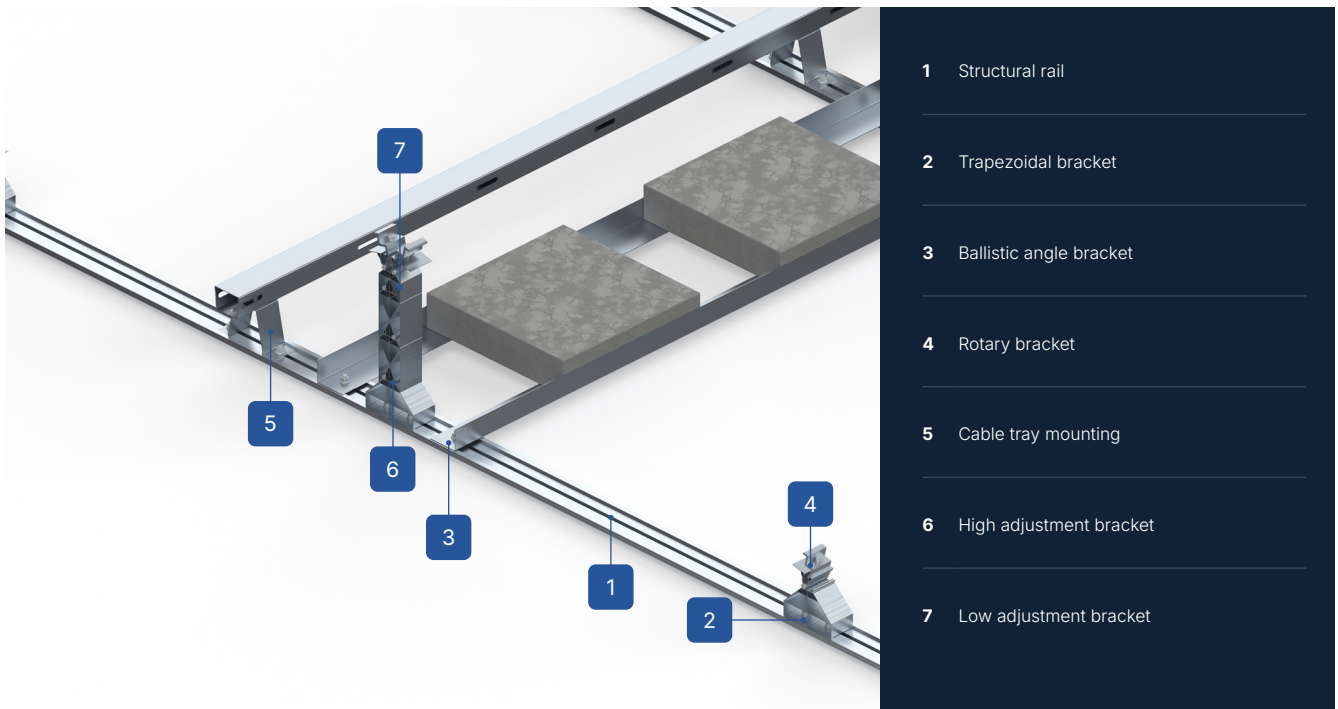
SEE ONLINE →



DESCRIPTION OF THE STRUCTURE

- A multi-part ballasted structure made of aluminum, designed for flat roofs, without the need for additional ballast.
- A universal photovoltaic structure allows for module tilt adjustments from 10 to 25 degrees, in 5-degree increments.
- Constant in-stock availability guarantees fast and efficient order fulfillment.
- This non-invasive system is based on a structural base, which must be ballasted with the appropriate number of ballast blocks according to the ballast plan.
- It is recommended that the ballast system be recalculated for each flat roof application, taking into account wind zones and load conditions.
- This system is designed for flat roofs where a welded structure is not possible.
- Installations with a capacity exceeding 50 kWp are recalculated individually by the technical department, taking into account the roof load and the amount and distribution of ballast.

Roof structures completed (FR)



- 1 Structural rail
- 2 Trapezoidal bracket
- 3 Ballistic angle bracket
- 4 Rotary bracket
- 5 Cable tray mounting
- 6 High adjustment bracket
- 7 Low adjustment bracket

CONSTRUCTION CHARACTERISTICS

FR-A-B-US-EW/H/LA/MAX-LONG-X

| | |
|---|--|
| Roof type | Aluminum Flat Roof (FR-A) |
| Roof mounting method | Ballasted Structure (B) |
| Construction type | Universal (US) |
| Module orientation | East-West (EW) |
| Module layout | Level (H) |
| PV module mounting method ¹ | Long Side (LA) |
| Application/mounting surface | PVC Membrane/Bituminous Membrane |
| Structure mounting method | The base of the structure is placed on the roof covering and then additionally ballasted using concrete blocks placed on a ballast platform. |
| Does the structure require additional ballast? | Yes |
| Approximate weight of the structure per 1m ² of installation without panel weight and additional ballast (kg/m ²) ² | 2.95 |
| Purlin length (mm) | No Purlins |
| Maximum PV module length (mm) ³ | Custom (X) |
| Distribution method | Available on stock |

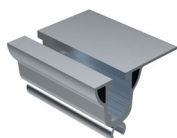
Roof structures completed (FR)

ELEMENTS OF THE BASE OF THE STRUCTURE



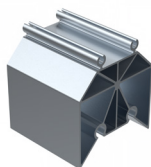
Trapezoidal bracket

RBTSOLAR-KD-AL-WT



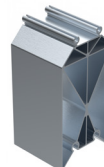
Swivel bracket

RBTSOLAR-KD-AL-WO



Low adjustment bracket

RBTSOLAR-KD-AL-WRN



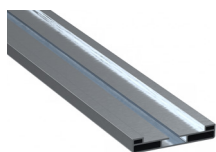
High adjustment bracket

RBTSOLAR-KD-AL-WRW



Cable tray mounting

RBTSOLAR-KD-MK



Structural rail

RBTSOLAR-KD-AL-SK



Ballast angle bracket

RBTSOLAR-KD-PBL



Self-tapping screw - ST4,8X9,5-C-S

WK4,8X9,5A2



T-head bolt M10X20

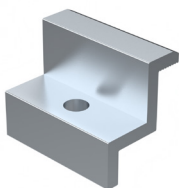
SMM10X20A2



M10 flange nut

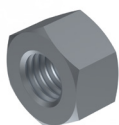
NKM10A2

OTHER ASSEMBLY ELEMENTS



End clamp 30/32/35/40 Natura/Czarna

KLK50/30(32/35/40)ALN
KLK50/30(32/35/40)ALCZ



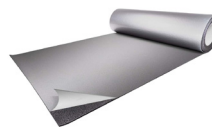
Hexagon nut M8 A2

NM8A2



Allen screw M8X35 A2

SIM8X35A2



Regupol

KD-GW-6/8,5/100-SAM