

Roof structures completed (FR)

001 Welded aluminum construction

FR-A-W-US-EW/H/LA/MAX-LONG-X

TYPE OF CONSTRUCTION

Universal (US)

DIRECTION OF MODULES

East-West (EW)

MODULE LAYOUT

Horizontal (H)

ASSEMBLY METHOD

Long Side (LA)

MAX PV MODULE LENGTH

Individual (X)



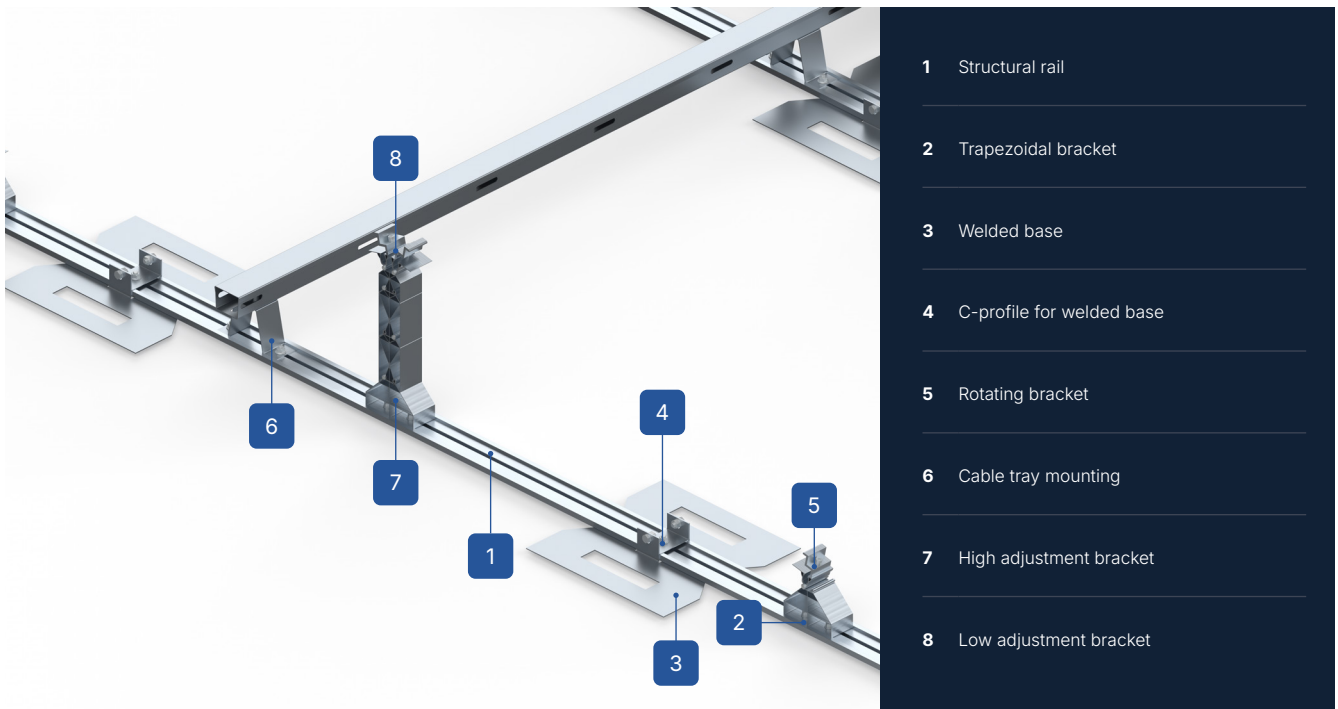
SEE ONLINE →



DESCRIPTION OF THE STRUCTURE

- A multi-part welded aluminum structure designed for flat roofs requiring additional ballast.
- A universal photovoltaic structure that allows for module tilt adjustments from 10-25 degrees, in 5-degree increments.
- Constant in-stock availability guarantees fast and efficient order fulfillment.
- A non-invasive system based on a structural base attached to the roof deck by welding appropriately sized bituminous or PVC/TPO membrane patches.
- The structural base was designed in collaboration with membrane roofing specialists to ensure short installation times and maximum tear-out resistance.
- A structural system that typically does not require a wind brace.
- Designed for roofs where the load-bearing capacity is insufficient for traditional Magnelis-based solutions.
- A hybrid system – in roof areas particularly exposed to wind suction, the number of welded bases can be increased. Installations with a capacity above 50kWp are each time recalculated by the technical department taking into account the roof load and the number and arrangement of welded feet.

Roof structures completed (FR)



CONSTRUCTION CHARACTERISTICS

FR-A-W-US-EW/H/LA/MAX-LONG-X

Roof type	Aluminum Flat Roof (FR-A)
Roof mounting method	Welded Structure (W)
Structure type	Universal (US)
Module orientation	East-West (EW)
Module layout	Level (H)
PV module mounting method ¹	Long Side (LA)
Application/mounting surface	PVC Membrane/Bituminous Membrane
Structure mounting method	The base of the structure is welded to the roof surface
Does the structure require additional ballast?	No
Approximate structure weight per 1m ² of installation without panel weight (kg/m ²) ²	2.25
Purlin length (mm)	No Purlins
Maximum PV module length (mm) ³	Custom (X)
Distribution method	Available on stock

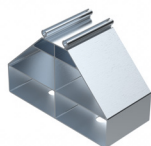
Roof structures completed (FR)

ELEMENTS OF THE BASE OF THE STRUCTURE



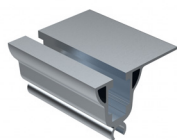
Welded base channel

RBTSOLAR-KD-AL-CPZ



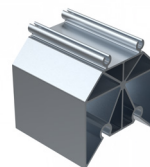
Trapezoidal bracket

RBTSOLAR-KD-AL-WT



Swivel bracket

RBTSOLAR-KD-AL-WO



Low adjustment bracket

RBTSOLAR-KD-AL-WRN



High adjustment bracket

RBTSOLAR-KD-AL-WRW



Cable tray mounting

RBTSOLAR-KD-MK



Structural rail

RBTSOLAR-KD-AL-SK



Welded base for support

RBTSOLAR-KD-PZ



Self-tapping screw-
ST4,8X9,5-C-S

WK4,8X9,5A2



T-head bolt
M10X20

SMM10X20A2



Hexagon nut
M10 A2

NM10A2



M10 flange nut

NKM10A2



Screw washer
M10 A2

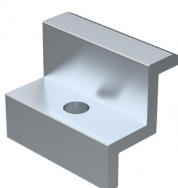
PSZM10A2



Hexagonal screw
M10x20 A2

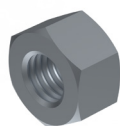
SM10x20A2

OTHER ASSEMBLY ELEMENTS



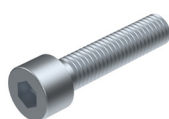
End clamp 30/32/35/40
Natura/Czarna

KLK50/30(32/35/40)ALN
KLK50/30(32/35/40)ALCZ



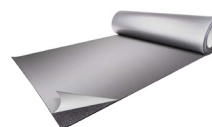
Hexagon nut
M8 A2

NM8A2



Allen screw
M8X35 A2

SIM8X35A2



Regupol

KD-GW-6/8,5/100-SAM