

Carpports (CP)

003

Multi-station design carport L

CP-HR-PS-L

TYPE OF CONSTRUCTION

Project (PS)

DIRECTION OF MODULES

Any

MODULE LAYOUT

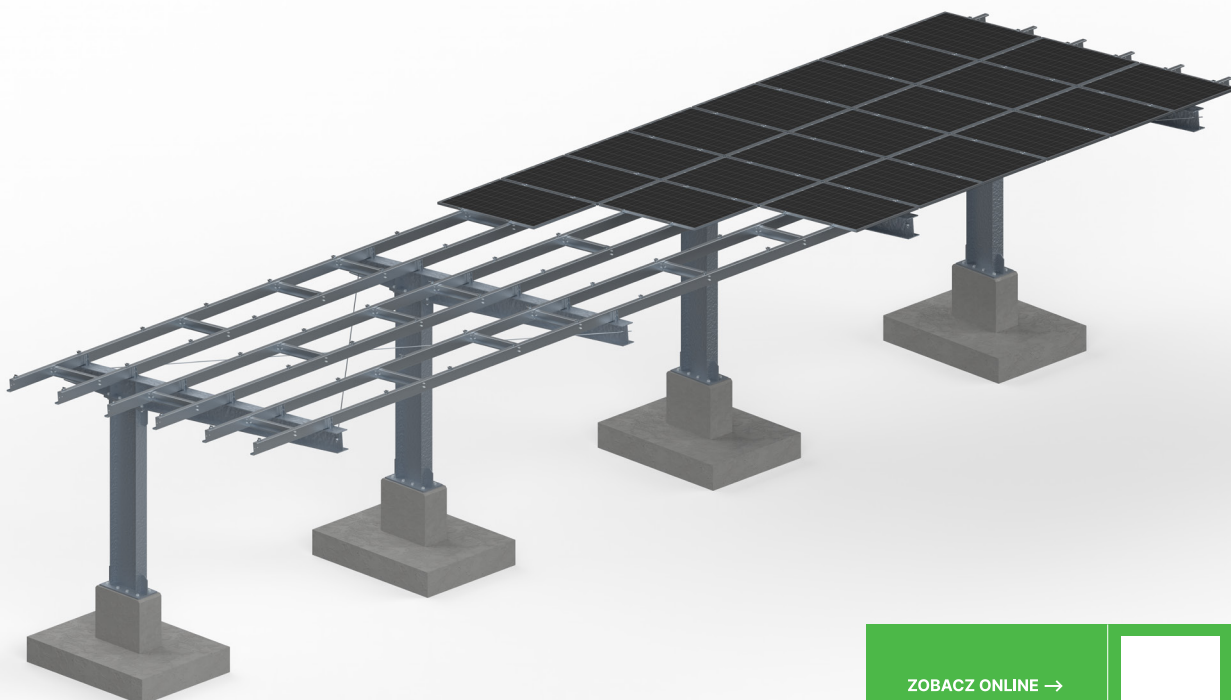
Any

ASSEMBLY METHOD

Depending on the number of positions.

MAX PV MODULE LENGTH

Individually selected



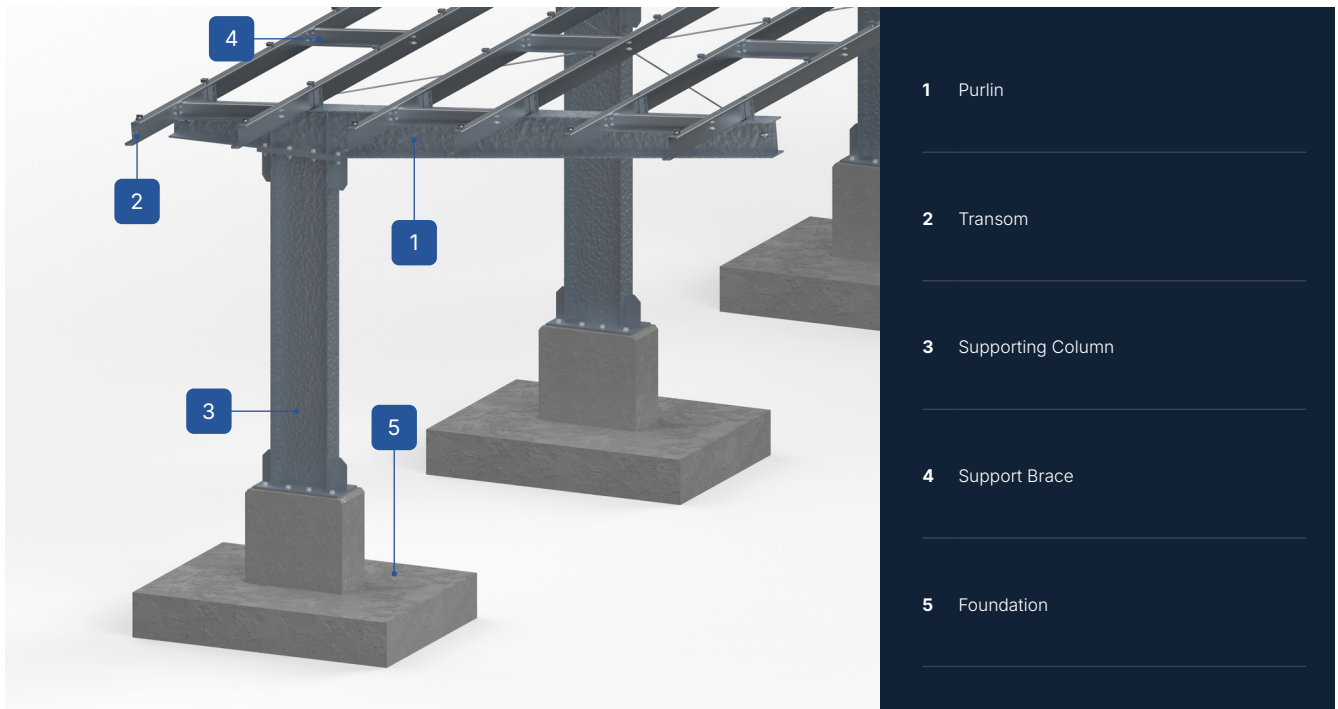
ZOBACZ ONLINE →



DESCRIPTION OF THE STRUCTURE

- A design-specific assembly system that allows for the use of structures for modules of varying power and size.
- A multi-support system tailored to the customer's needs, i.e., the size and number of parking spaces.
- A multi-part structure made of hot-rolled, galvanized or painted profiles and Magnelis™ sheet metal.
- Designed for various types of driveways and parking lots.
- The bolted system used for mounting purlins, transoms, and columns requires no maintenance, provided installation is carried out according to the instructions.
- Ideal for the construction of multi-station parking lots for commercial, industrial, service, or multi-family buildings.

Carports (CP)



CONSTRUCTION CHARACTERISTICS

CP-HR-PS-L

Substrate Type	Soil
Structure Type and Installation Method	Hot-rolled carport (CP-HR), attached to a prefabricated or on-site foundation with chemical anchors
Structure Type	Design (PS)
Module Orientation	Any
Module Layout	Any
Number of PV Modules	Customized
Module Type	Customized
Pole Shape	L
Minimum Number of Modules on the Structure	Customized
Standard Clamp Height (mm)	35
Standard Clamp Thickness (mm)	5
Maximum PV Module Length (mm)	-
Standard Slope	10 degrees
Distribution Method	On request

Carports (CP)

ELEMENTS OF THE BASE OF THE STRUCTURE



Brace Connector

...



Screw washer M24

...



Screw washer M8

...



Screw washer M12

...



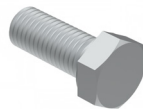
Screw washer M8

...



Hex Bolt M8

...



Hex Bolt M12

...



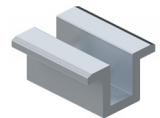
Hex Bolt M24

...



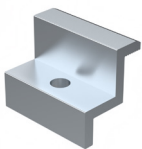
Hex Bolt M8

...



Center Clamp

...



End Clamp

...



Hex Nut M8

...



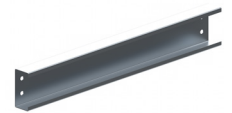
Hex Nut M24

...



Hex Nut M12

...



Purlin Brace

...



Support Column

...



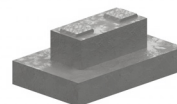
Support Frame

...



Purlin

...



Foundation Slab

...