

Flat roof structures (FR)

29

Screw-on structure

FR-S-PS-EW/H/SA/MAX-LONG-X

TYPE

Projected (PS)

MODULE DIRECTION

East-west (EW)

MODULE LAYOUT

Horizontal (H)

INSTALLATION

Short side (SA)

MAX PV MODULE LENGTH

Individual (X)



SEE ONLINE →



DESCRIPTION

- A multi-part construction made of Magnelis™ sheet metal, designed for flat or sloped roofs, without the need for additional ballast and without the possibility of using a welded structure.
- An invasive installation system, by fastening to the roof substructure using an appropriate number of screws.

Flat roof structures (FR)



CHARACTERISTICS

FR-S-PS-EW/H/SA/MAX-LONG-X

Roof type	Flat roof (FR)
Method of mounting the structure on the roof	Screw-on (S)
Type of construction	Projected (PS)
Module orientation	East-west (EW)
Module layout	Horizontal (H)
How to install a PV module ¹	Short side (SA)
Application/substrate on which it is mounted	PVC membrane/bituminous membrane/sandwich panel/trapezoidal sheet
Method of assembly	The base of the structure is attached to the roof substructure
Does the structure require additional ballast?	No
Is it possible to apply the hybrid solution (weld + ballast)?	No
Approximate weight of the structure per 1m ² of installation without additional ballast (kg/m ²) ²	~12
Purlin length (mm)	X
Wind brace length (mm)	Without wind guard
Maximum PV module length (mm) ³	X
How to install the clamps	Clamps mounted to the triangle - key system
Method of distribution	Custom construction made to order with a lead time of up to 4 weeks for modules with lengths as specified in the product sheet sent for quotation.

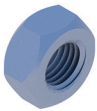
¹ the proposed installation method for a given type of module may differ from the installation method provided by the PV module manufacturer, whose recommendations and recommendations determine the proper installation.

² weight calculated for a system of three modules in one row with the maximum dimensions for a given type of structure

³ the given maximum size of the module and the proposed method of its installation may differ from the installation method provided by the PV module manufacturer, whose recommendations and recommendations determine the proper installation

Flat roof structures (FR)

LIST OF PARTS - BASE OF CONSTRUCTION



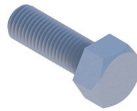
Hexagonal nut
M8 IE

NM8Z



Washer M8 300HV
ISO7093-1 IE

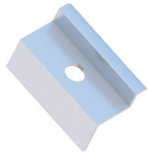
PPM8Z



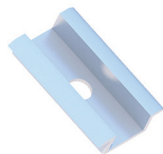
Screw
M8X97 IE

SM8X97Z

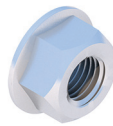
LIST OF PARTS - OTHER INSTALLATION ELEMENTS



End clamp
30/32/35/40
Nature/Black
KLK50/30(32/35/40)ALN
KLK50/30(32/35/40)ALCZ



Middle clamp
50 universal
Nature/Black
KLSR50ALN
KLSR50ALCZ



Flange nut
serrated
M8 DIN6923 A2
NKM8A2



Allen screw
M8X35 DIN912 A2
SIM8X35A2



M10 double thread screw
200/250/300
RBTSOLAR-KD-DWUG200/250/300