

Ground structures



Ground structures (G)



STRUCTURE	CARD NO.	CONSTRUCTION TYPE	MODULE DIRECTION	MODULE LAYOUT	SUPPORT NO.	MAX SIZE (PV MODULE)	PV MODULES NO.	PAGE
Piled structure (G-P)	01	Universal (US)	South (S)	Vertical (V)	2	2210×1200	2×1	3
		Universal (US)	South (S)	Vertical (V)	2	2210×1200	2×2	
	02	Universal (US)	South (S)	Vertical (V)	2	2465×1500	2×1	6
		Universal (US)	South (S)	Vertical (V)	2	2465×1500	2×2	
	03	Individual (I)	South (S)	Vertical (V)	1		2×4 (+2)	9
	04	Individual (I)	South (S)	Vertical (V)	2		2×4 (+2)	12
	05	Individual (I)	South (S)	Vertical (V)	2		3×3 (+3)	18
	06	Individual (I)	South (S)	Horizontal (H)	2		3×3 (+3)	21
	07	Individual (I)	South (S)	Horizontal (H)	2		4×3 (+4)	24
	08	Individual (I)	South (S)	Horizontal (H)	2		5×4 (+4)	27
	09	Individual (I)	South (S)	Horizontal (H)	2		6×6 (+6)	30
	10	Individual (I)	East-west (EW)	Vertical (V)	3		2×4-2×4 (+4)	33
Ballast structure (G-B)	11	Individual (I)	East-west (EW)	Horizontal (H)	3		3×3-3×3 (+6)	36
	12	Individual (I)	East-west (EW)	Horizontal (H)	3		4×4-4×4 (+8)	39
	13	Individual (I)	South (S)	Vertical (V)	1		2×4 (+2)	42
	14	Individual (I)	South (S)	Vertical (V)	2		2×4 (+2)	45
	15	Individual (I)	South (S)	Vertical (V)	2		3×3 (+3)	51
	16	Individual (I)	South (S)	Horizontal (H)	2		3×3 (+3)	54
	17	Individual (I)	South (S)	Horizontal (H)	2		4×3 (+4)	57
	18	Individual (I)	South (S)	Horizontal (H)	2		5×4 (+4)	60
	19	Individual (I)	South (S)	Horizontal (H)	2		6×6 (+6)	63
	20	Individual (I)	East-west (EW)	Vertical (V)	3		2×4-2×4 (+4)	66
	21	Individual (I)	East-west (EW)	Horizontal (H)	3		3×3-3×3 (+6)	69
	22	Individual (I)	East-west (EW)	Horizontal (H)	3		4×4-4×4 (+8)	72

[Find a representative →](#)
[Legal note →](#)


Individual structures are made for an individual order with 4 week production period.
Universal structures are currently in stock and available on hand.



01

Piled structure

G-P-US-S/V/2/MAX2210×1200/2×1
G-P-US-S/V/2/MAX2210×1200/2×2

TYPE

Universal (US)

MODULE DIRECTION

South (S)

MODULE LAYOUT

Vertical (V)

SUPPORTS NO.

Two

NO. / WIDTH (MAX) OF PV MODULES

2×1 and/or 2×2 / 2210×1200



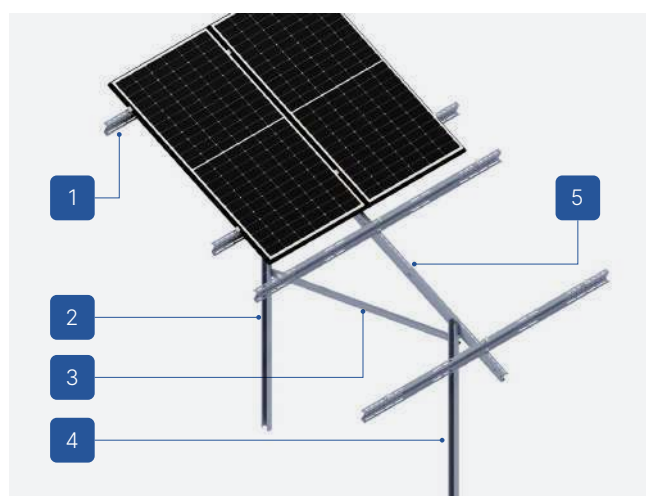
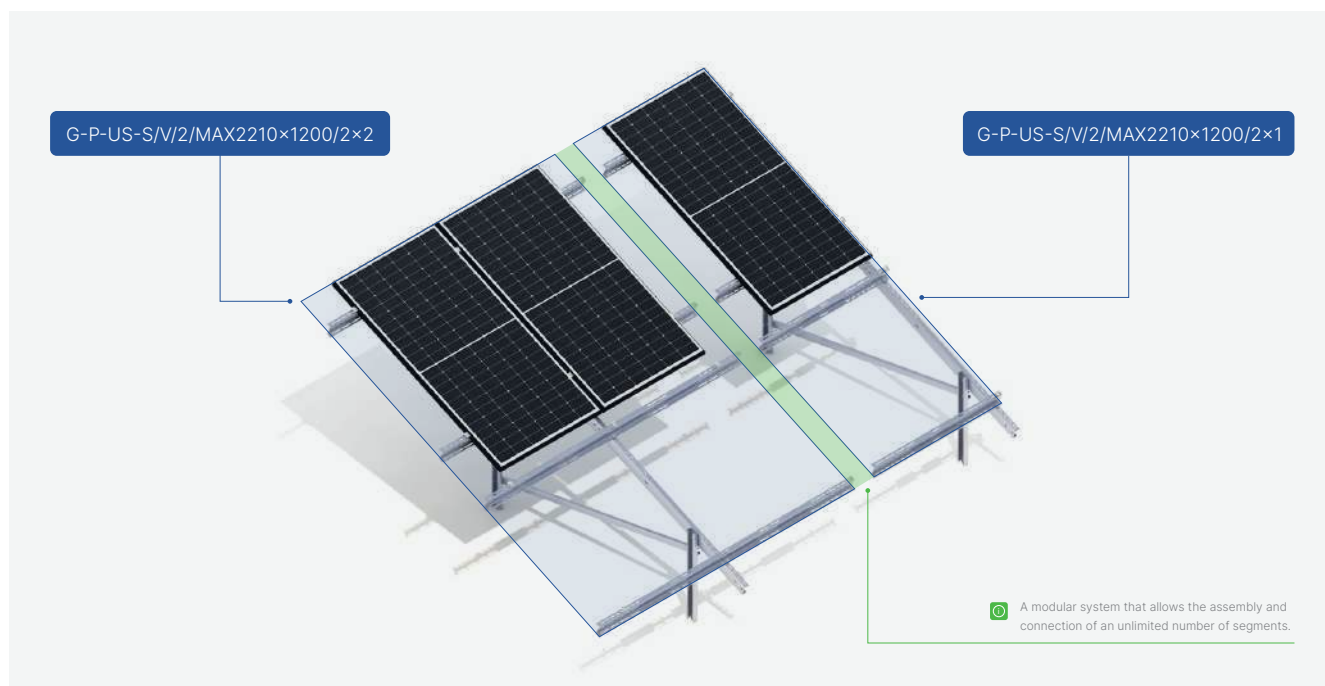
SEE ONLINE →



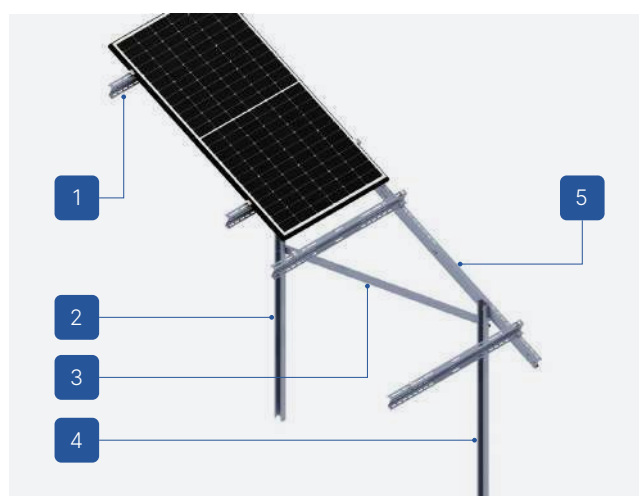
DESCRIPTION

- A universal mounting system built with adjustable, telescopic beams allowing for the use of structures for modules of different power and size.
- A multipart ground structure made of Magnelis™ steel designed for soil, piled without the need for additional ballasting.
- Excellent for constructing installations up to 50 kW that require quick delivery of structures to the construction site.
- The screw system used for mounting beams, latches, and posts does not require servicing as long as the installation is carried out according to the instructions.
- Available in stock with piling up to 1500 mm.
- A construction system for which assembly requires assembling a minimum of two construction segments - segment 2×2 and/or 2×1.
- A modular system that allows the assembly and connection of an unlimited number of segments.
- The system is designed for ground installations where the primary criterion for choosing the structure is the inability to use additional ballast.
- The possibility of using a hybrid system in which there is an option to load the column/columns with ballast in places where it is not possible to drive stakes to a specified depth.

Ground structures (G)



1. Purlin
2. Back leg/support
3. Zastrzał przód-tył
4. Front leg/support
5. Latch



1. Purlin
2. Back leg/support
3. Zastrzał przód-tył
4. Front leg/support
5. Latch

Ground structures (G)



CHARACTERISTICS

G-P-US-S/V/2/MAX2210×1200

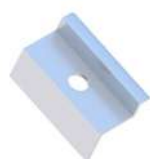
Type of substrate	Ground (G)
Construction installation method	Piled structure (P)
Type of construction	Universal (US)
Module orientation	South (S)
Module layout	Vertical (V)
Type of modules	Standard/Bifacial
Shape of the column	C-profile
Does the construction require additional ballast?	No
Is it possible to use a hybrid solution (piling + ballast)?	Yes - possibility of additional ballasting
Height of standard clamps (mm)	35
Thickness of standard clamps (mm)	5
Maximum PV module size (mm)	2210×1200
Distribution method	Available in stock

2×1

2×2

Minimum number of modules on the structure	2 (+2)	4 (+4)
--	--------	--------

LIST OF PARTS - BASE OF CONSTRUCTION



End clamp
35
Nature/Black
KLK50/35ALN
KLK50/35ALCZ



Middle clamp
50 universal
Nature/Black
KLSR50ALN
KLSR50ALCZ



Flange nut
serrated
M8 DIN6923 A2
NKM8A2



Hexagonal nut
M10 IE
NM10Z



Washer M10 300HV
ISO7093-1 IE
PSZM10Z



Allen screw
M8X100 DIN912 A2
SIM8X100A2



Hexagonal screw
M10X20 IE
SM10X20Z

02

Piled structure

G-P-US-S/V/2/MAX2465×1500/2×1
G-P-US-S/V/2/MAX2465×1500/2×2

TYPE

Universal (US)

MODULE DIRECTION

South (S)

MODULE LAYOUT

Vertical (V)

SUPPORTS NO.

Two

NO. / WIDTH (MAX) OF PV MODULES

2×1 i/lub 2×2 / 2465×1500



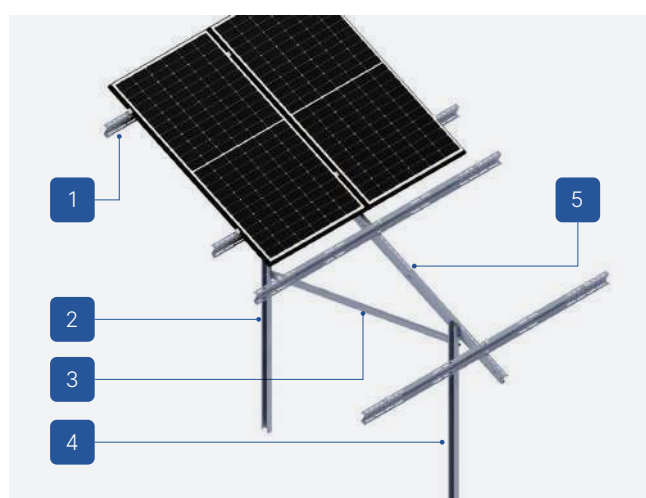
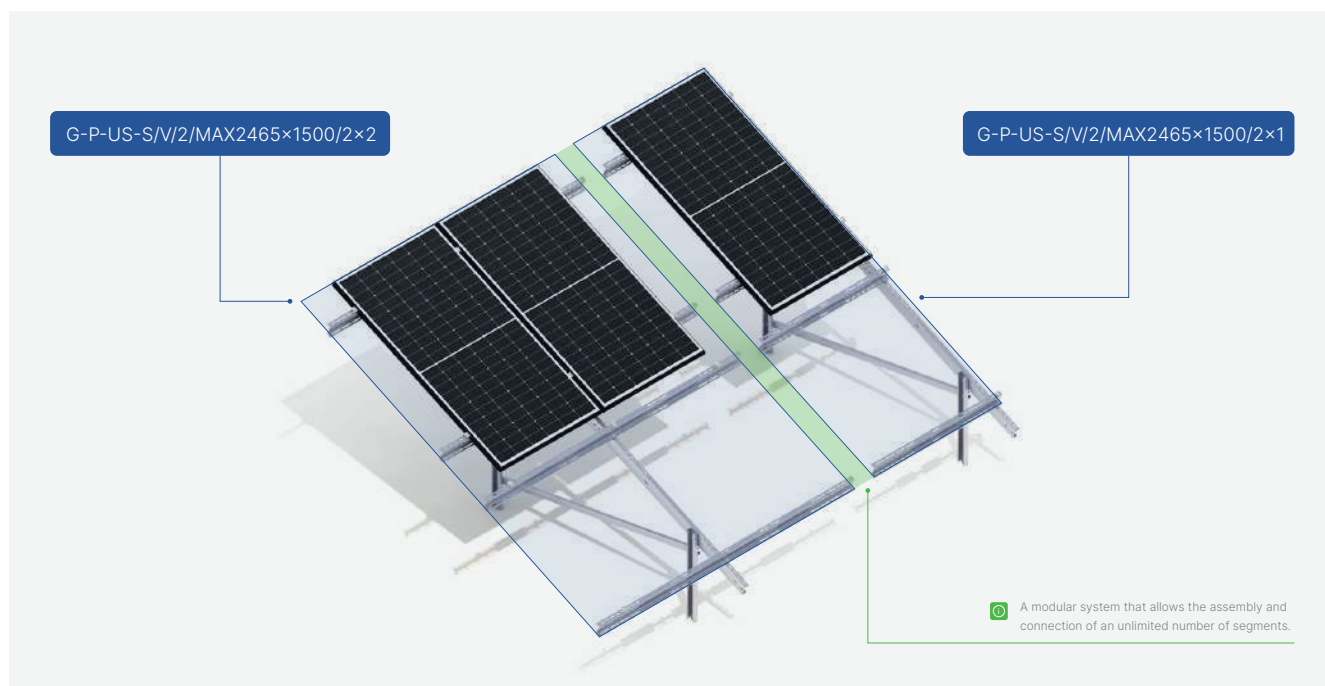
SEE ONLINE →



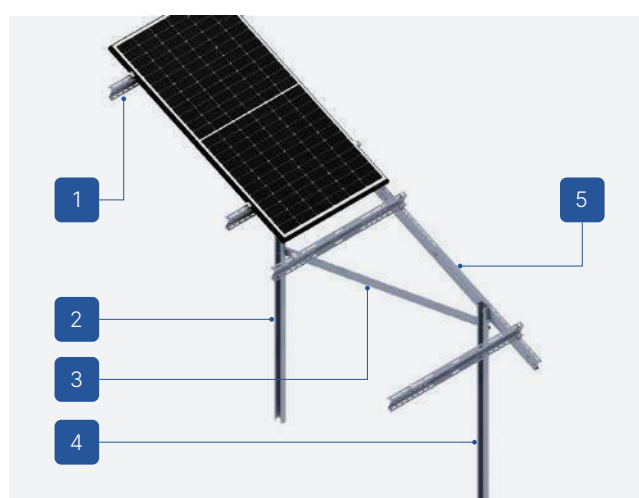
DESCRIPTION

- A universal mounting system built with adjustable, telescopic beams allowing for the use of structures for modules of different power and size.
- A multipart ground structure made of Magnelis™ steel designed for soil, piled without the need for additional ballasting.
- Excellent for constructing installations up to 50 kW that require quick delivery of structures to the construction site.
- The screw system used for mounting beams, latches, and posts does not require servicing as long as the installation is carried out according to the instructions.
- Available in stock with piling up to 1500 mm.
- A construction system for which assembly requires assembling a minimum of two construction segments - segment 2×2 and/or 2×1.
- A modular system that allows the assembly and connection of an unlimited number of segments.
- The system is designed for ground installations where the primary criterion for choosing the structure is the inability to use additional ballast.
- The possibility of using a hybrid system in which there is an option to load the column/columns with ballast in places where it is not possible to drive stakes to a specified depth.

Ground structures (G)



1. Purlin
2. Back leg/support
3. Zastrzał przód-tył
4. Front leg/support
5. Latch



1. Purlin
2. Back leg/support
3. Zastrzał przód-tył
4. Front leg/support
5. Latch

Ground structures (G)



CHARACTERISTICS

G-P-US-S/V/2/MAX2465×1500

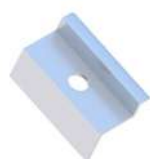
Type of substrate	Ground (G)
Construction installation method	Piled structure (P)
Type of construction	Universal (US)
Module orientation	South (S)
Module layout	Vertical (V)
Type of modules	Standard/Bifacial
Shape of the column	C-profile
Does the construction require additional ballast?	No
Is it possible to use a hybrid solution (piling + ballast)?	Yes - possibility of additional ballasting
Height of standard clamps (mm)	35
Thickness of standard clamps (mm)	5
Maximum PV module size (mm)	2465×1500
Distribution method	Available in stock

2×1

2×2

Minimum number of modules on the structure	2 (+2)	4 (+4)
--	--------	--------

LIST OF PARTS - BASE OF CONSTRUCTION



End clamp
35
Nature/Black
KLK50/35ALN
KLK50/35ALCZ



Middle clamp
50 universal
Nature/Black
KLSR50ALN
KLSR50ALCZ



Flange nut
serrated
M8 DIN6923 A2
NKM8A2



Hexagonal nut
M10 IE
NM10Z



Washer M10 300HV
ISO7093-1 IE
PSZM10Z



Allen screw
M8X100 DIN912 A2
SIM8X100A2



Hexagonal screw
M10X20 IE
SM10X20Z

03

Piled structure

G-P-I-S/V/1/2×4

TYPE

Individual (I)

MODULE DIRECTION

South (S)

MODULE LAYOUT

Vertical (V)

SUPPORTS NO.

One

NUMBER OF PV MODULES

2×4 (+2)

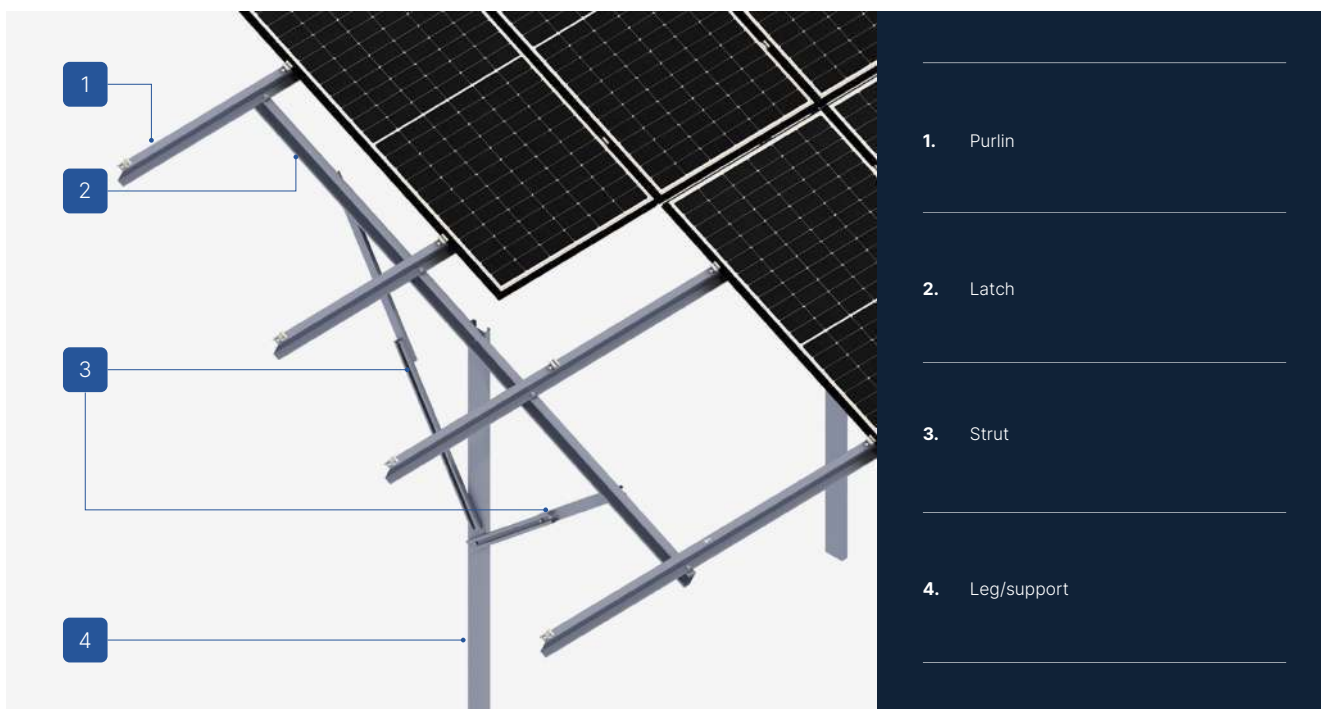


SEE ONLINE →



DESCRIPTION

- A multipart ground structure made of Magnelis™ steel designed for soil. Piled, without the need for additional ballasting.
- Excellent for constructing installations above 50 kW, that require building permits, and whose components need optimization due to the specific location of the structure.
- The mounting system is constructed from individually selected structural elements, including beams, latches, and legs, allowing for the use of the structure only for predetermined modules and their sizes.
- The screw system used for mounting beams, latches, and legs does not require servicing, as long as the installation is carried out according to the instructions.
- Before production, it is necessary to provide a site development plan, along with module installation instructions and geotechnical conditions, including previous piling test results.
- The system is designed for ground installations, where, due to challenging geotechnical conditions (e.g., areas with dolomite), it is necessary to use two-piece columns, including a lower column with increased strength (CW profile) for piling in rocky soils.
- There is the possibility of applying a hybrid system, allowing for the weighting of the leg/legs in places where it is not possible to drill it/them to a specified depth.



CHARACTERISTICS

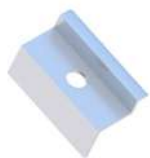
G-P-I-S/V/1/2×4

Type of substrate	Ground (G)
Construction installation method	Piled structure (P)
Type of construction	Individual (I)
Module orientation	South (S)
Module layout	Vertical (V)
Number of columns	1
Number of PV modules	2×4 (+2)
Type of modules	Standard/Bifacial
Shape of the column	C-profile / CW-profile
Does the construction require additional ballast?	No
Is it possible to use a hybrid solution (piling + ballast)?	Yes - possibility of additional ballasting
Minimum number of modules on the structure	8
Height of standard clamps (mm)	35
Thickness of standard clamps (mm)	5
Maximum PV module size (mm)	-
Distribution method	Individual order

Ground structures (G)



LIST OF PARTS - BASE OF CONSTRUCTION



End clamp
35
Nature/Black
KLK50/35ALN
KLK50/35ALCZ



Middle clamp
50 universal
Nature/Black
KLSR50ALN
KLSR50ALCZ



Flange nut
serrated
M8 DIN6923 A2
NSHM8A2



Hexagonal nut
M10 IE
NM10Z



Washer M10 300HV
ISO7093-1 IE
PSZM10Z



Allen screw
M8X100 DIN912 A2
SIM8X100A2



Hexagonal screw
M10X20 IE
SM10X20Z

LIST OF PARTS - OTHER INSTALLATION ELEMENTS



Bipartite support leg
CW-profile



Strut

04A

Piled structure

G-P-I-S/V/2/2×4

TYPE

Individual (I)

MODULE DIRECTION

South (S)

MODULE LAYOUT

Vertical (V)

SUPPORTS NO.

Two

NUMBER OF PV MODULES

2×4 (+2)



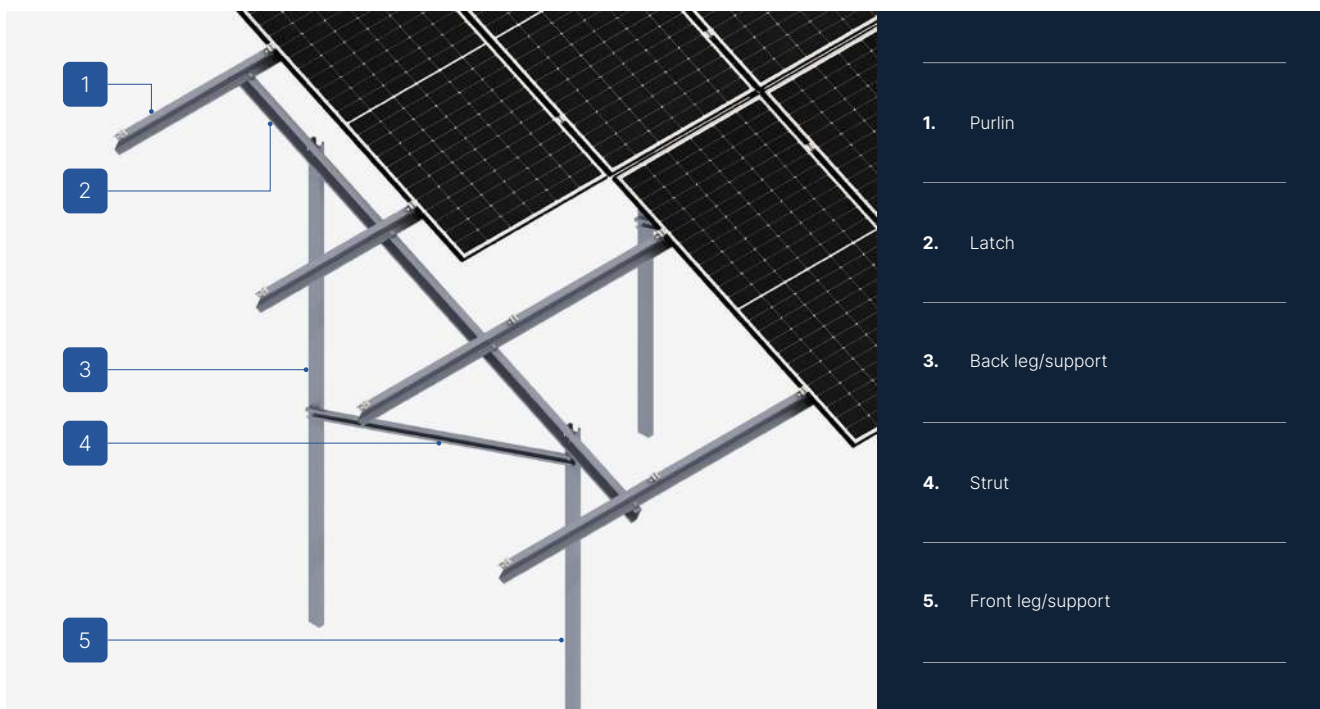
SEE ONLINE →



DESCRIPTION

- A multipart ground structure made of Magnelis™ steel designed for soil. Piled, without the need for additional ballasting.
- Excellent for constructing installations above 50 kW, that require building permits, and whose components need optimization due to the specific location of the structure.
- The mounting system is constructed from individually selected structural elements, including beams, latches, and legs, allowing for the use of the structure only for predetermined modules and their sizes.
- The screw system used for mounting beams, latches, and legs does not require servicing, as long as the installation is carried out according to the instructions.
- Before production, it is necessary to provide a site development plan, along with module installation instructions and geotechnical conditions, including previous piling test results.
- The system is designed for ground installations, where, due to challenging geotechnical conditions (e.g., areas with dolomite), it is necessary to use two-piece columns, including a lower column with increased strength (CW profile) for piling in rocky soils.
- There is the possibility of applying a hybrid system, allowing for the weighting of the leg/legs in places where it is not possible to drill it/them to a specified depth.

Ground structures (G)



CHARACTERISTICS

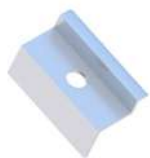
G-P-I-S/V/2/2×4

Type of substrate	Ground (G)
Construction installation method	Piled structure (P)
Type of construction	Individual (I)
Module orientation	South (S)
Module layout	Vertical (V)
Number of columns	2
Number of PV modules	2×4 (+2)
Type of modules	Standard/Bifacial
Shape of the column	C-profile / CW-profile
Does the construction require additional ballast?	No
Is it possible to use a hybrid solution (piling + ballast)?	Yes - possibility of additional ballasting
Minimum number of modules on the structure	8
Height of standard clamps (mm)	35
Thickness of standard clamps (mm)	5
Maximum PV module size (mm)	-
Distribution method	Individual order

Ground structures (G)



LIST OF PARTS - BASE OF CONSTRUCTION



End clamp
35
Nature/Black
KLK50/35ALN
KLK50/35ALCZ



Middle clamp
50 universal
Nature/Black
KLSR50ALN
KLSR50ALCZ



Flange nut
serrated
M8 DIN6923 A2
NSHM8A2



Hexagonal nut
M10 IE
NM10Z



Washer M10 300HV
ISO7093-1 IE
PSZM10Z



Allen screw
M8X100 DIN912 A2
SIM8X100A2



Hexagonal screw
M10X20 IE
SM10X20Z

LIST OF PARTS - OTHER INSTALLATION ELEMENTS



Bipartite support leg
CW-profile



Strut

04B

Piled structure

G-P-I-S/V/2/2×4

TYPE

Individual (I)

MODULE DIRECTION

South (S)

MODULE LAYOUT

Vertical (V)

SUPPORTS NO.

Two

NUMBER OF PV MODULES

2×4 (+2)



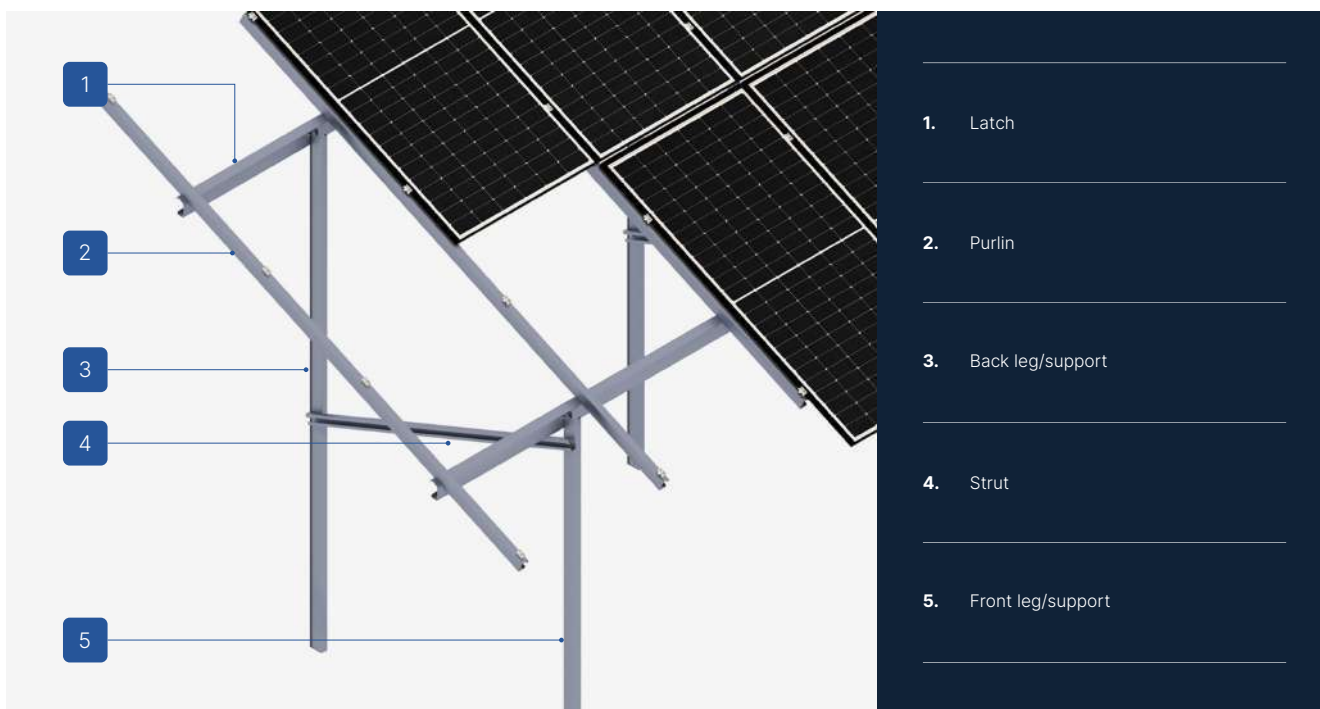
SEE ONLINE →



DESCRIPTION

- A multipart ground structure made of Magnelis™ steel designed for soil. Piled, without the need for additional ballasting.
- Excellent for constructing installations above 50 kW, that require building permits, and whose components need optimization due to the specific location of the structure.
- The mounting system is constructed from individually selected structural elements, including beams, latches, and legs, allowing for the use of the structure only for predetermined modules and their sizes.
- The screw system used for mounting beams, latches, and legs does not require servicing, as long as the installation is carried out according to the instructions.
- Before production, it is necessary to provide a site development plan, along with module installation instructions and geotechnical conditions, including previous piling test results.
- The system is designed for ground installations, where, due to challenging geotechnical conditions (e.g., areas with dolomite), it is necessary to use two-piece columns, including a lower column with increased strength (CW profile) for piling in rocky soils.
- There is the possibility of applying a hybrid system, allowing for the weighting of the leg/legs in places where it is not possible to drill it/them to a specified depth.

Ground structures (G)



CHARACTERISTICS

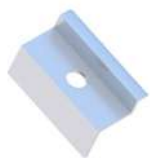
G-P-I-S/V/2/2×4

Type of substrate	Ground (G)
Construction installation method	Piled structure (P)
Type of construction	Individual (I)
Module orientation	South (S)
Module layout	Vertical (V)
Number of columns	2
Number of PV modules	2×4 (+2)
Type of modules	Standard/Bifacial
Shape of the column	C-profile / CW-profile
Does the construction require additional ballast?	No
Is it possible to use a hybrid solution (piling + ballast)?	Yes - possibility of additional ballasting
Minimum number of modules on the structure	8
Height of standard clamps (mm)	35
Thickness of standard clamps (mm)	5
Maximum PV module size (mm)	-
Distribution method	Individual order

Ground structures (G)



LIST OF PARTS - BASE OF CONSTRUCTION



End clamp
35
Nature/Black
KLK50/35ALN
KLK50/35ALCZ



Middle clamp
50 universal
Nature/Black
KLSR50ALN
KLSR50ALCZ



Flange nut
serrated
M8 DIN6923 A2
NSHM8A2



Hexagonal nut
M10 IE
NM10Z



Washer M10 300HV
ISO7093-1 IE
PSZM10Z



Allen screw
M8X100 DIN912 A2
SIM8X100A2



Hexagonal screw
M10X20 IE
SM10X20Z

LIST OF PARTS - OTHER INSTALLATION ELEMENTS



Bipartite support leg
CW-profile



Strut

05

Piled structure

G-P-I-S/V/2/3×3

TYPE

Individual (I)

MODULE DIRECTION

South (S)

MODULE LAYOUT

Vertical (V)

SUPPORTS NO.

Two

NUMBER OF PV MODULES

3×3 (+3)



SEE ONLINE →



DESCRIPTION

- A multipart ground structure made of Magnelis™ steel designed for soil. Piled, without the need for additional ballasting.
- Excellent for constructing installations above 50 kW, that require building permits, and whose components need optimization due to the specific location of the structure.
- The mounting system is constructed from individually selected structural elements, including beams, latches, and legs, allowing for the use of the structure only for predetermined modules and their sizes.
- The screw system used for mounting beams, latches, and legs does not require servicing, as long as the installation is carried out according to the instructions.
- Before production, it is necessary to provide a site development plan, along with module installation instructions and geotechnical conditions, including previous piling test results.
- The system is designed for ground installations, where, due to challenging geotechnical conditions (e.g., areas with dolomite), it is necessary to use two-piece columns, including a lower column with increased strength (CW profile) for piling in rocky soils.
- There is the possibility of applying a hybrid system, allowing for the weighting of the leg/legs in places where it is not possible to drill it/them to a specified depth.

Ground structures (G)



CHARACTERISTICS

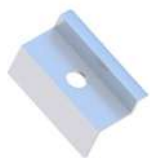
G-P-I-S/V/2/3×3

Type of substrate	Ground (G)
Construction installation method	Piled structure (P)
Type of construction	Individual (I)
Module orientation	South (S)
Module layout	Vertical (V)
Number of columns	2
Number of PV modules	3×3 (+3)
Type of modules	Standard/Bifacial
Shape of the column	C-profile / CW-profile
Does the construction require additional ballast?	No
Is it possible to use a hybrid solution (piling + ballast)?	Yes - possibility of additional ballasting
Minimum number of modules on the structure	9
Height of standard clamps (mm)	35
Thickness of standard clamps (mm)	5
Maximum PV module size (mm)	-
Distribution method	Individual order

Ground structures (G)



LIST OF PARTS - BASE OF CONSTRUCTION



End clamp
35
Nature/Black
KLK50/35ALN
KLK50/35ALCZ



Middle clamp
50 universal
Nature/Black
KLSR50ALN
KLSR50ALCZ



Flange nut
serrated
M8 DIN6923 A2
NSHM8A2



Hexagonal nut
M10 IE
NM10Z



Washer M10 300HV
ISO7093-1 IE
PSZM10Z



Allen screw
M8X100 DIN912 A2
SIM8X100A2



Hexagonal screw
M10X20 IE
SM10X20Z

LIST OF PARTS - OTHER INSTALLATION ELEMENTS



Bipartite support leg
CW-profile



Strut

06

Piled structure

G-P-I-S/H/2/3×3

TYPE

Individual (I)

MODULE DIRECTION

South (S)

MODULE LAYOUT

Horizontal (H)

SUPPORTS NO.

Two

NUMBER OF PV MODULES

3×3 (+3)



SEE ONLINE →



DESCRIPTION

- A multipart ground structure made of Magnelis™ steel designed for soil. Piled, without the need for additional ballasting.
- Excellent for constructing installations above 50 kW, that require building permits, and whose components need optimization due to the specific location of the structure.
- The mounting system is constructed from individually selected structural elements, including beams, latches, and legs, allowing for the use of the structure only for predetermined modules and their sizes.
- The screw system used for mounting beams, latches, and legs does not require servicing, as long as the installation is carried out according to the instructions.
- Before production, it is necessary to provide a site development plan, along with module installation instructions and geotechnical conditions, including previous piling test results.
- The system is designed for ground installations, where, due to challenging geotechnical conditions (e.g., areas with dolomite), it is necessary to use two-piece columns, including a lower column with increased strength (CW profile) for piling in rocky soils.
- There is the possibility of applying a hybrid system, allowing for the weighting of the leg/legs in places where it is not possible to drill it/them to a specified depth.

Ground structures (G)



CHARACTERISTICS

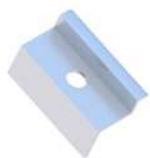
G-P-I-S/H/2/3×3

Type of substrate	Ground (G)
Construction installation method	Piled structure (P)
Type of construction	Individual (I)
Module orientation	South (S)
Module layout	Horizontal (H)
Number of columns	2
Number of PV modules	3×3 (+3)
Type of modules	Standard/Bifacial
Shape of the column	C-profile / CW-profile
Does the construction require additional ballast?	No
Is it possible to use a hybrid solution (piling + ballast)?	Yes - possibility of additional ballasting
Minimum number of modules on the structure	9
Height of standard clamps (mm)	35
Thickness of standard clamps (mm)	5
Maximum PV module size (mm)	-
Distribution method	Individual order

Ground structures (G)



LIST OF PARTS - BASE OF CONSTRUCTION



End clamp
35
Nature/Black
KLK50/35ALN
KLK50/35ALCZ



Middle clamp
50 universal
Nature/Black
KLSR50ALN
KLSR50ALCZ



Flange nut
serrated
M8 DIN6923 A2
NSHM8A2



Hexagonal nut
M10 IE
NM10Z



Washer M10 300HV
ISO7093-1 IE
PSZM10Z



Allen screw
M8X100 DIN912 A2
SIM8X100A2



Hexagonal screw
M10X20 IE
SM10X20Z

LIST OF PARTS - OTHER INSTALLATION ELEMENTS



Bipartite support leg
CW-profile



Strut

07

Piled structure

G-P-I-S/H/2/4×3

TYPE

Individual (I)

MODULE DIRECTION

South (S)

MODULE LAYOUT

Horizontal (H)

SUPPORTS NO.

Two

NUMBER OF PV MODULES

4×3 (+4)



SEE ONLINE →



DESCRIPTION

- A multipart ground structure made of Magnelis™ steel designed for soil. Piled, without the need for additional ballasting.
- Excellent for constructing installations above 50 kW, that require building permits, and whose components need optimization due to the specific location of the structure.
- The mounting system is constructed from individually selected structural elements, including beams, latches, and legs, allowing for the use of the structure only for predetermined modules and their sizes.
- The screw system used for mounting beams, latches, and legs does not require servicing, as long as the installation is carried out according to the instructions.
- Before production, it is necessary to provide a site development plan, along with module installation instructions and geotechnical conditions, including previous piling test results.
- The system is designed for ground installations, where, due to challenging geotechnical conditions (e.g., areas with dolomite), it is necessary to use two-piece columns, including a lower column with increased strength (CW profile) for piling in rocky soils.
- There is the possibility of applying a hybrid system, allowing for the weighting of the leg/legs in places where it is not possible to drill it/them to a specified depth.



CHARACTERISTICS

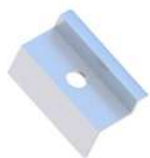
G-P-I-S/H/2/4×3

Type of substrate	Ground (G)
Construction installation method	Piled structure (P)
Type of construction	Individual (I)
Module orientation	South (S)
Module layout	Horizontal (H)
Number of columns	2
Number of PV modules	4×3 (+4)
Type of modules	Standard/Bifacial
Shape of the column	C-profile / CW-profile
Does the construction require additional ballast?	No
Is it possible to use a hybrid solution (piling + ballast)?	Yes - possibility of additional ballasting
Minimum number of modules on the structure	12
Height of standard clamps (mm)	35
Thickness of standard clamps (mm)	5
Maximum PV module size (mm)	-
Distribution method	Individual order

Ground structures (G)



LIST OF PARTS - BASE OF CONSTRUCTION



End clamp
35
Nature/Black
KLK50/35ALN
KLK50/35ALCZ



Middle clamp
50 universal
Nature/Black
KLSR50ALN
KLSR50ALCZ



Flange nut
serrated
M8 DIN6923 A2
NSHM8A2



Hexagonal nut
M10 IE
NM10Z



Washer M10 300HV
ISO7093-1 IE
PSZM10Z



Allen screw
M8X100 DIN912 A2
SIM8X100A2



Hexagonal screw
M10X20 IE
SM10X20Z

LIST OF PARTS - OTHER INSTALLATION ELEMENTS



Bipartite support leg
CW-profile



Strut

08

Piled structure

G-P-I-S/H/2/5×4

TYPE

Individual (I)

MODULE DIRECTION

South (S)

MODULE LAYOUT

Horizontal (H)

SUPPORTS NO.

Two

NUMBER OF PV MODULES

5×4 (+4)



SEE ONLINE →



DESCRIPTION

- A multipart ground structure made of Magnelis™ steel designed for soil. Piled, without the need for additional ballasting.
- Excellent for constructing installations above 50 kW, that require building permits, and whose components need optimization due to the specific location of the structure.
- The mounting system is constructed from individually selected structural elements, including beams, latches, and legs, allowing for the use of the structure only for predetermined modules and their sizes.
- The screw system used for mounting beams, latches, and legs does not require servicing, as long as the installation is carried out according to the instructions.
- Before production, it is necessary to provide a site development plan, along with module installation instructions and geotechnical conditions, including previous piling test results.
- The system is designed for ground installations, where, due to challenging geotechnical conditions (e.g., areas with dolomite), it is necessary to use two-piece columns, including a lower column with increased strength (CW profile) for piling in rocky soils.
- There is the possibility of applying a hybrid system, allowing for the weighting of the leg/legs in places where it is not possible to drill it/them to a specified depth.



CHARACTERISTICS

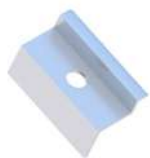
G-P-I-S/H/2/5×4

Type of substrate	Ground (G)
Construction installation method	Piled structure (P)
Type of construction	Individual (I)
Module orientation	South (S)
Module layout	Horizontal (H)
Number of columns	2
Number of PV modules	5×4 (+4)
Type of modules	Standard/Bifacial
Shape of the column	C-profile / CW-profile
Does the construction require additional ballast?	No
Is it possible to use a hybrid solution (piling + ballast)?	Yes - possibility of additional ballasting
Minimum number of modules on the structure	20
Height of standard clamps (mm)	35
Thickness of standard clamps (mm)	5
Maximum PV module size (mm)	-
Distribution method	Individual order

Ground structures (G)



LIST OF PARTS - BASE OF CONSTRUCTION



End clamp
35
Nature/Black
KLK50/35ALN
KLK50/35ALCZ



Middle clamp
50 universal
Nature/Black
KLSR50ALN
KLSR50ALCZ



Flange nut
serrated
M8 DIN6923 A2
NSHM8A2



Hexagonal nut
M10 IE
NM10Z



Washer M10 300HV
ISO7093-1 IE
PSZM10Z



Allen screw
M8X100 DIN912 A2
SIM8X100A2



Hexagonal screw
M10X20 IE
SM10X20Z

LIST OF PARTS - OTHER INSTALLATION ELEMENTS



Bipartite support leg
CW-profile



Strut

09

Piled structure

G-P-I-S/H/2/6×6

TYPE

Individual (I)

MODULE DIRECTION

South (S)

MODULE LAYOUT

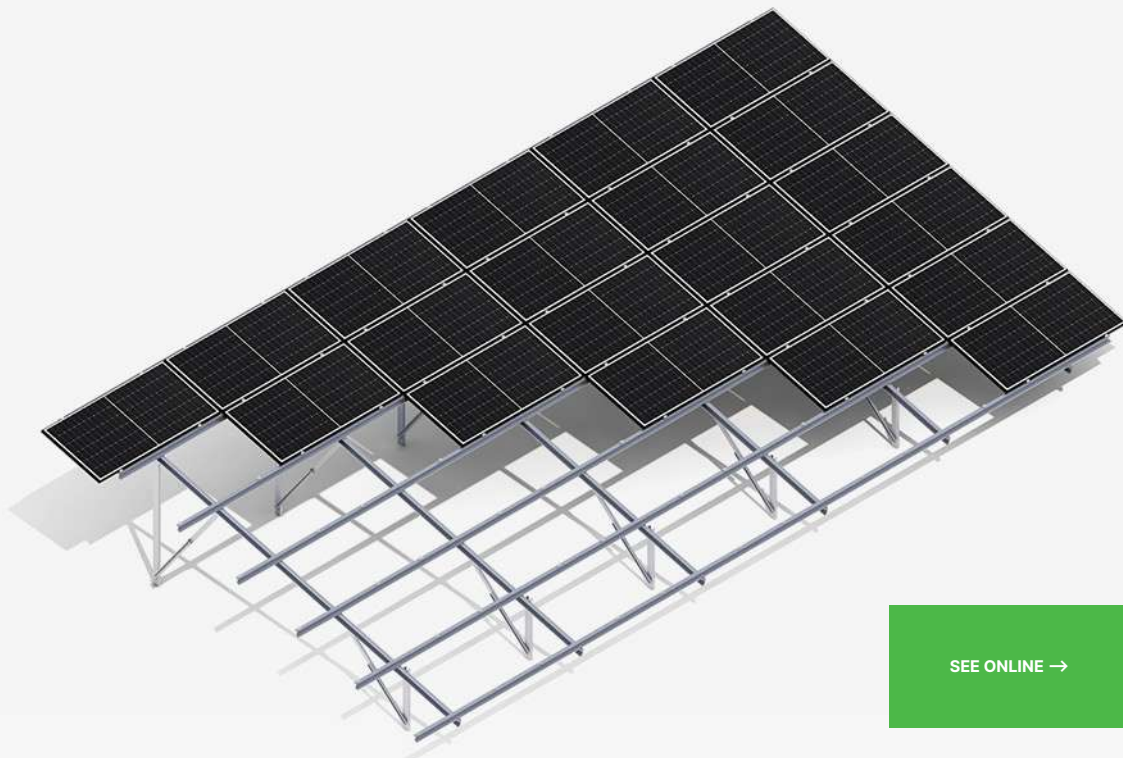
Horizontal (H)

SUPPORTS NO.

Two

NUMBER OF PV MODULES

6×6 (+6)



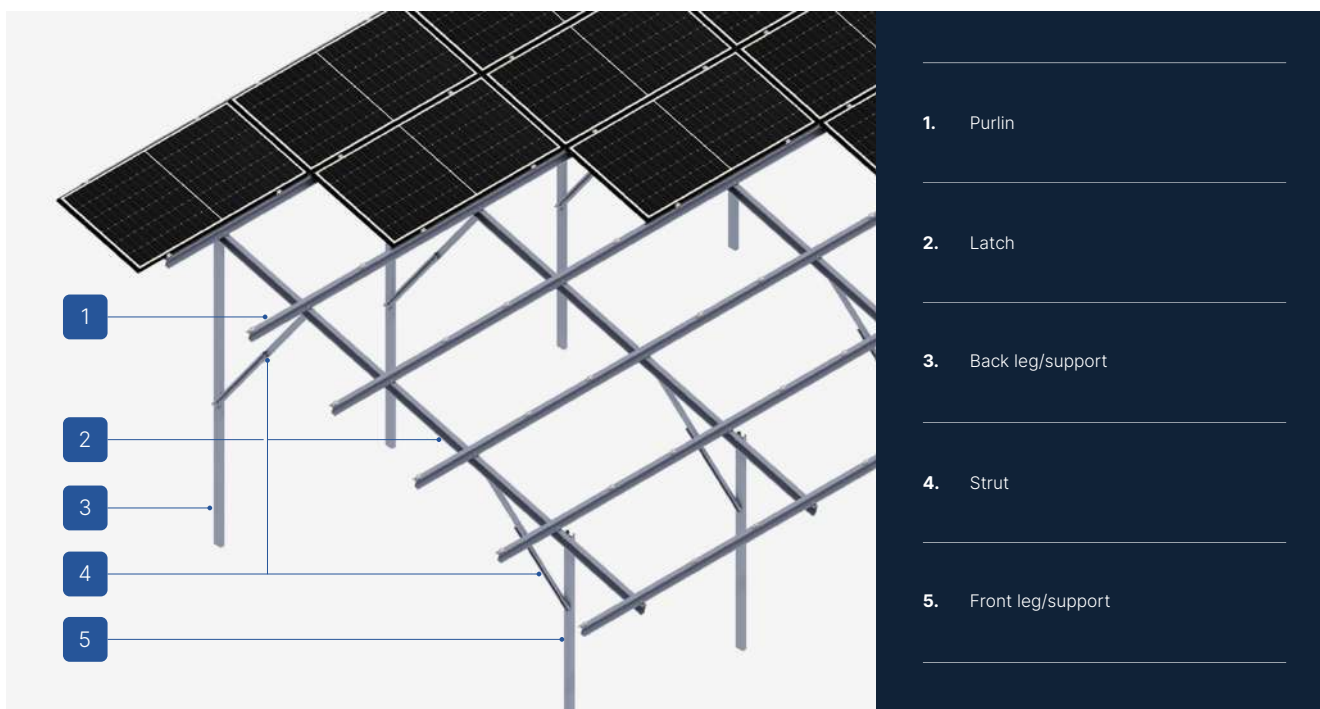
SEE ONLINE →



DESCRIPTION

- A multipart ground structure made of Magnelis™ steel designed for soil. Piled, without the need for additional ballasting.
- Excellent for constructing installations above 50 kW, that require building permits, and whose components need optimization due to the specific location of the structure.
- The mounting system is constructed from individually selected structural elements, including beams, latches, and legs, allowing for the use of the structure only for predetermined modules and their sizes.
- The screw system used for mounting beams, latches, and legs does not require servicing, as long as the installation is carried out according to the instructions.
- Before production, it is necessary to provide a site development plan, along with module installation instructions and geotechnical conditions, including previous piling test results.
- The system is designed for ground installations, where, due to challenging geotechnical conditions (e.g., areas with dolomite), it is necessary to use two-piece columns, including a lower column with increased strength (CW profile) for piling in rocky soils.
- There is the possibility of applying a hybrid system, allowing for the weighting of the leg/legs in places where it is not possible to drill it/them to a specified depth.

Ground structures (G)



CHARACTERISTICS

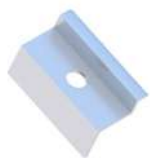
G-P-I-S/H/2/6×6

Type of substrate	Ground (G)
Construction installation method	Piled structure (P)
Type of construction	Individual (I)
Module orientation	South (S)
Module layout	Horizontal (H)
Number of columns	2
Number of PV modules	6×6 (+6)
Type of modules	Standard/Bifacial
Shape of the column	C-profile / CW-profile
Does the construction require additional ballast?	No
Is it possible to use a hybrid solution (piling + ballast)?	Yes - possibility of additional ballasting
Minimum number of modules on the structure	36
Height of standard clamps (mm)	35
Thickness of standard clamps (mm)	5
Maximum PV module size (mm)	-
Distribution method	Individual order

Ground structures (G)



LIST OF PARTS - BASE OF CONSTRUCTION



End clamp
35
Nature/Black
KLK50/35ALN
KLK50/35ALCZ



Middle clamp
50 universal
Nature/Black
KLSR50ALN
KLSR50ALCZ



Flange nut
serrated
M8 DIN6923 A2
NSHM8A2



Hexagonal nut
M10 IE
NM10Z



Washer M10 300HV
ISO7093-1 IE
PSZM10Z



Allen screw
M8X100 DIN912 A2
SIM8X100A2



Hexagonal screw
M10X20 IE
SM10X20Z

LIST OF PARTS - OTHER INSTALLATION ELEMENTS



Bipartite support leg
CW-profile



Strut

10

Piled structure

G-P-I-EW/V/3/2×4-2×4

TYPE

Individual (I)

MODULE DIRECTION

East-west (EW)

MODULE LAYOUT

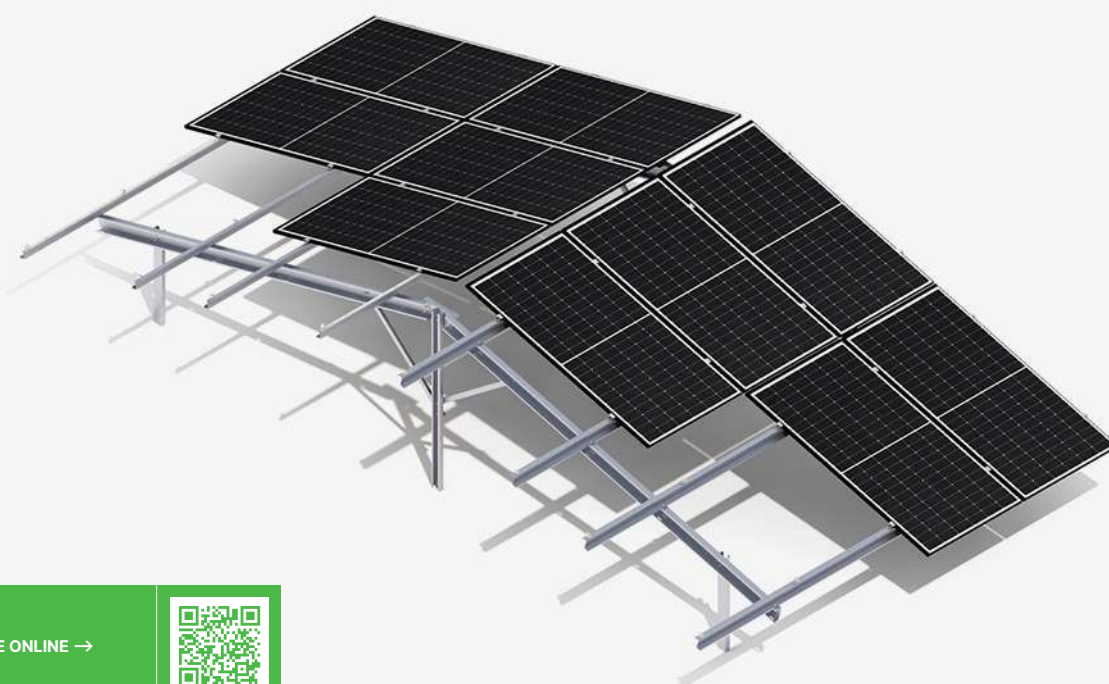
Vertical (V)

SUPPORTS NO.

Three

NUMBER OF PV MODULES

2×4 + 2×4 (+4)



SEE ONLINE →



DESCRIPTION

- A multipart ground structure made of Magnelis™ steel designed for soil. Piled, without the need for additional ballasting.
- Excellent for constructing installations above 50 kW, that require building permits, and whose components need optimization due to the specific location of the structure.
- The mounting system is constructed from individually selected structural elements, including beams, latches, and legs, allowing for the use of the structure only for predetermined modules and their sizes.
- The screw system used for mounting beams, latches, and legs does not require servicing, as long as the installation is carried out according to the instructions.
- Before production, it is necessary to provide a site development plan, along with module installation instructions and geotechnical conditions, including previous piling test results.
- The system is designed for ground installations, where, due to challenging geotechnical conditions (e.g., areas with dolomite), it is necessary to use two-piece columns, including a lower column with increased strength (CW profile) for piling in rocky soils.
- There is the possibility of applying a hybrid system, allowing for the weighting of the leg/legs in places where it is not possible to drill it/them to a specified depth.

Ground structures (G)



1. Latch
2. Purlin
3. Long leg/support
4. Strut
5. Short leg/support

CHARACTERISTICS

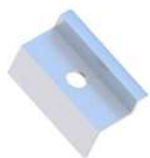
G-P-I-EW/V/3/2×4-2×4

Type of substrate	Ground (G)
Construction installation method	Piled structure (P)
Type of construction	Individual (I)
Module orientation	East-west (EW)
Module layout	Vertical (V)
Number of columns	3
Number of PV modules	2×4 + 2×4 (+4)
Type of modules	Standard/Bifacial
Shape of the column	C-profile / CW-profile
Does the construction require additional ballast?	No
Is it possible to use a hybrid solution (piling + ballast)?	Yes - possibility of additional ballasting
Minimum number of modules on the structure	16
Height of standard clamps (mm)	35
Thickness of standard clamps (mm)	5
Maximum PV module size (mm)	-
Distribution method	Individual order

Ground structures (G)



LIST OF PARTS - BASE OF CONSTRUCTION



End clamp
35
Nature/Black
KLK50/35ALN
KLK50/35ALCZ



Middle clamp
50 universal
Nature/Black
KLSR50ALN
KLSR50ALCZ



Flange nut
serrated
M8 DIN6923 A2
NSHM8A2



Hexagonal nut
M10 IE
NM10Z



Washer M10 300HV
ISO7093-1 IE
PSZM10Z



Allen screw
M8X100 DIN912 A2
SIM8X100A2



Hexagonal screw
M10X20 IE
SM10X20Z

LIST OF PARTS - OTHER INSTALLATION ELEMENTS



Bipartite support leg
CW-profile



Strut

11

Piled structure

G-P-I-EW/H/3/3×3-3×3

TYPE

Individual (I)

MODULE DIRECTION

East-west (EW)

MODULE LAYOUT

Horizontal (H)

SUPPORTS NO.

Three

NUMBER OF PV MODULES

3×3 + 3×3 (+6)



SEE ONLINE →



DESCRIPTION

- A multipart ground structure made of Magnelis™ steel designed for soil. Piled, without the need for additional ballasting.
- Excellent for constructing installations above 50 kW, that require building permits, and whose components need optimization due to the specific location of the structure.
- The mounting system is constructed from individually selected structural elements, including beams, latches, and legs, allowing for the use of the structure only for predetermined modules and their sizes.
- The screw system used for mounting beams, latches, and legs does not require servicing, as long as the installation is carried out according to the instructions.
- Before production, it is necessary to provide a site development plan, along with module installation instructions and geotechnical conditions, including previous piling test results.
- The system is designed for ground installations, where, due to challenging geotechnical conditions (e.g., areas with dolomite), it is necessary to use two-piece columns, including a lower column with increased strength (CW profile) for piling in rocky soils.
- There is the possibility of applying a hybrid system, allowing for the weighting of the leg/legs in places where it is not possible to drill it/them to a specified depth.

Ground structures (G)



CHARACTERISTICS

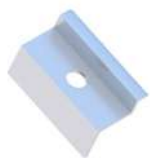
G-P-I-EW/H/3/3×3-3×3

Type of substrate	Ground (G)
Construction installation method	Piled structure (P)
Type of construction	Individual (I)
Module orientation	East-west (EW)
Module layout	Horizontal (H)
Number of columns	3
Number of PV modules	3×3 + 3×3 (+6)
Type of modules	Standard/Bifacial
Shape of the column	C-profile / CW-profile
Does the construction require additional ballast?	No
Is it possible to use a hybrid solution (piling + ballast)?	Yes - possibility of additional ballasting
Minimum number of modules on the structure	18
Height of standard clamps (mm)	35
Thickness of standard clamps (mm)	5
Maximum PV module size (mm)	-
Distribution method	Individual order

Ground structures (G)



LIST OF PARTS - BASE OF CONSTRUCTION



End clamp
35
Nature/Black
KLK50/35ALN
KLK50/35ALCZ



Middle clamp
50 universal
Nature/Black
KLSR50ALN
KLSR50ALCZ



Flange nut
serrated
M8 DIN6923 A2
NSHM8A2



Hexagonal nut
M10 IE
NM10Z



Washer M10 300HV
ISO7093-1 IE
PSZM10Z



Allen screw
M8X100 DIN912 A2
SIM8X100A2



Hexagonal screw
M10X20 IE
SM10X20Z

LIST OF PARTS - OTHER INSTALLATION ELEMENTS



Bipartite support leg
CW-profile



Strut

12

Piled structure

G-P-I-EW/H/3/4×4-4×4

TYPE

Individual (I)

MODULE DIRECTION

East-west (EW)

MODULE LAYOUT

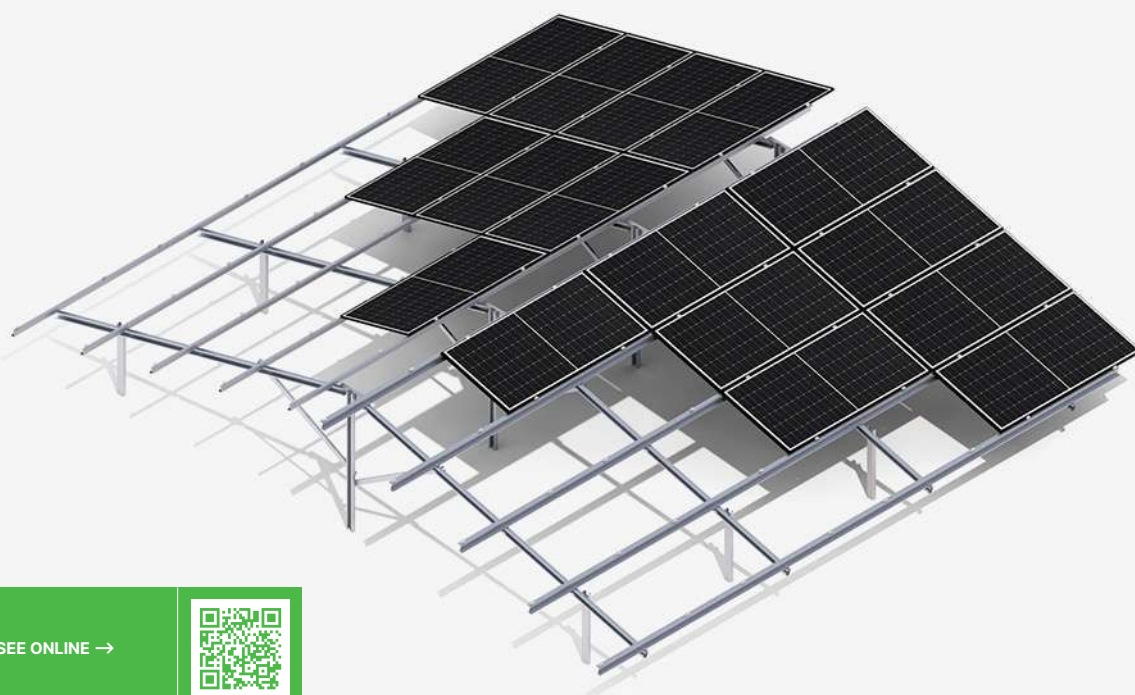
Horizontal (H)

SUPPORTS NO.

Three

NUMBER OF PV MODULES

4×4 + 4×4 (+8)



SEE ONLINE →



DESCRIPTION

- A multipart ground structure made of Magnelis™ steel designed for soil. Piled, without the need for additional ballasting.
- Excellent for constructing installations above 50 kW, that require building permits, and whose components need optimization due to the specific location of the structure.
- The mounting system is constructed from individually selected structural elements, including beams, latches, and legs, allowing for the use of the structure only for predetermined modules and their sizes.
- The screw system used for mounting beams, latches, and legs does not require servicing, as long as the installation is carried out according to the instructions.
- Before production, it is necessary to provide a site development plan, along with module installation instructions and geotechnical conditions, including previous piling test results.
- The system is designed for ground installations, where, due to challenging geotechnical conditions (e.g., areas with dolomite), it is necessary to use two-piece columns, including a lower column with increased strength (CW profile) for piling in rocky soils.
- There is the possibility of applying a hybrid system, allowing for the weighting of the leg/legs in places where it is not possible to drill it/them to a specified depth.

Ground structures (G)



CHARACTERISTICS

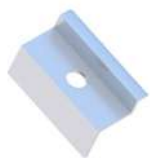
G-P-I-EW/H/3/4×4-4×4

Type of substrate	Ground (G)
Construction installation method	Piled structure (P)
Type of construction	Individual (I)
Module orientation	East-west (EW)
Module layout	Horizontal (H)
Number of columns	3
Number of PV modules	4×4 + 4×4 (+8)
Type of modules	Standard/Bifacial
Shape of the column	C-profile / CW-profile
Does the construction require additional ballast?	No
Is it possible to use a hybrid solution (piling + ballast)?	Yes - possibility of additional ballasting
Minimum number of modules on the structure	32
Height of standard clamps (mm)	35
Thickness of standard clamps (mm)	5
Maximum PV module size (mm)	-
Distribution method	Individual order

Ground structures (G)



LIST OF PARTS - BASE OF CONSTRUCTION



End clamp
35
Nature/Black
KLK50/35ALN
KLK50/35ALCZ



Middle clamp
50 universal
Nature/Black
KLSR50ALN
KLSR50ALCZ



Flange nut
serrated
M8 DIN6923 A2
NSHM8A2



Hexagonal nut
M10 IE
NM10Z



Washer M10 300HV
ISO7093-1 IE
PSZM10Z



Allen screw
M8X100 DIN912 A2
SIM8X100A2



Hexagonal screw
M10X20 IE
SM10X20Z

LIST OF PARTS - OTHER INSTALLATION ELEMENTS



Bipartite support leg
CW-profile



Strut



13

Ballast structure

G-B-I-S/V/1/2×4

TYPE

Individual (I)

MODULE DIRECTION

South (S)

MODULE LAYOUT

Vertical (V)

SUPPORTS NO.

One

NUMBER OF PV MODULES

2×4 (+2)



SEE ONLINE →



DESCRIPTION

- A multipart ground structure made of Magnelis™ steel designed for soils and areas where additional ballasting is required.
- Excellent for constructing installations above 50 kW that require building permits, and whose components need optimization due to the specific location of the structure.
- The mounting system is constructed from individually selected structural elements, including beams, latches, and legs, allowing for the use of the structure only for predetermined modules and their sizes.
- The screw system used for mounting beams, latches, and legs does not require servicing as long as the installation is carried out according to the instructions.
- Before production, it is necessary to provide a site development plan along with module installation instructions.
- The system is designed for ground installations where the primary criterion for choosing the structure is the need for additional ballasting.
- There is the possibility of applying a hybrid system, allowing for the weighting of the leg/legs in places where it is not possible to drill it/them to a specified depth.



CHARACTERISTICS

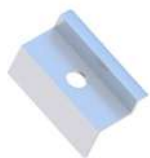
G-B-I-S/V/1/2×4

Type of substrate	Ground (G)
Construction installation method	Ballast structure (B)
Type of construction	Individual (I)
Module orientation	South (S)
Module layout	Vertical (V)
Number of columns	1
Number of PV modules	2×4 (+2)
Type of modules	Standard/Bifacial
Shape of the column	C-profile / CW-profile
Does the construction require additional ballast?	Yes
Is it possible to use a hybrid solution (piling + ballast)?	Yes - possibility of additional ballasting
Minimum number of modules on the structure	8
Height of standard clamps (mm)	35
Thickness of standard clamps (mm)	5
Maximum PV module size (mm)	-
Distribution method	Individual order

Ground structures (G)



LIST OF PARTS - BASE OF CONSTRUCTION



End clamp
35
Nature/Black
KLK50/35ALN
KLK50/35ALCZ



Middle clamp
50 universal
Nature/Black
KLSR50ALN
KLSR50ALCZ



Flange nut
serrated
M8 DIN6923 A2
NSHM8A2



Hexagonal nut
M10 IE
NM10Z



Washer M10 300HV
ISO7093-1 IE
PSZM10Z



Allen screw
M8X100 DIN912 A2
SIM8X100A2



Hexagonal screw
M10X20 IE
SM10X20Z

LIST OF PARTS - OTHER INSTALLATION ELEMENTS



Strut

14A

Ballast structure

G-B-I-S/V/2/2×4

TYPE

Individual (I)

MODULE DIRECTION

South (S)

MODULE LAYOUT

Vertical (V)

SUPPORTS NO.

Two

NUMBER OF PV MODULES

2×4 (+2)



SEE ONLINE →



DESCRIPTION

- A multipart ground structure made of Magnelis™ steel designed for soils and areas where additional ballasting is required.
- Excellent for constructing installations above 50 kW that require building permits, and whose components need optimization due to the specific location of the structure.
- The mounting system is constructed from individually selected structural elements, including beams, latches, and legs, allowing for the use of the structure only for predetermined modules and their sizes.
- The screw system used for mounting beams, latches, and legs does not require servicing as long as the installation is carried out according to the instructions.
- Before production, it is necessary to provide a site development plan along with module installation instructions.
- The system is designed for ground installations where the primary criterion for choosing the structure is the need for additional ballasting.
- There is the possibility of applying a hybrid system, allowing for the weighting of the leg/legs in places where it is not possible to drill it/them to a specified depth.

Ground structures (G)



CHARACTERISTICS

G-B-I-S/V/2/2×4

Type of substrate	Ground (G)
Construction installation method	Ballast structure (B)
Type of construction	Individual (I)
Module orientation	South (S)
Module layout	Vertical (V)
Number of columns	2
Number of PV modules	2×4 (+2)
Type of modules	Standard/Bifacial
Shape of the column	C-profile / CW-profile
Does the construction require additional ballast?	Yes
Is it possible to use a hybrid solution (piling + ballast)?	Yes - possibility of additional ballasting
Minimum number of modules on the structure	8
Height of standard clamps (mm)	35
Thickness of standard clamps (mm)	5
Maximum PV module size (mm)	-
Distribution method	Individual order

Ground structures (G)



LIST OF PARTS - BASE OF CONSTRUCTION



End clamp
35
Nature/Black
KLK50/35ALN
KLK50/35ALCZ



Middle clamp
50 universal
Nature/Black
KLSR50ALN
KLSR50ALCZ



Flange nut
serrated
M8 DIN6923 A2
NSHM8A2



Hexagonal nut
M10 IE
NM10Z



Washer M10 300HV
ISO7093-1 IE
PSZM10Z



Allen screw
M8X100 DIN912 A2
SIM8X100A2



Hexagonal screw
M10X20 IE
SM10X20Z

LIST OF PARTS - OTHER INSTALLATION ELEMENTS



Strut

14B

Ballast structure

G-P-I-S/V/2/2×4

TYPE

Individual (I)

MODULE DIRECTION

South (S)

MODULE LAYOUT

Vertical (V)

SUPPORTS NO.

Two

NUMBER OF PV MODULES

2×4 (+2)



SEE ONLINE →



DESCRIPTION

- A multipart ground structure made of Magnelis™ steel designed for soils and areas where additional ballasting is required.
- Excellent for constructing installations above 50 kW that require building permits, and whose components need optimization due to the specific location of the structure.
- The mounting system is constructed from individually selected structural elements, including beams, latches, and legs, allowing for the use of the structure only for predetermined modules and their sizes.
- The screw system used for mounting beams, latches, and legs does not require servicing as long as the installation is carried out according to the instructions.
- Before production, it is necessary to provide a site development plan along with module installation instructions.
- The system is designed for ground installations where the primary criterion for choosing the structure is the need for additional ballasting.
- There is the possibility of applying a hybrid system, allowing for the weighting of the leg/legs in places where it is not possible to drill it/them to a specified depth.

Ground structures (G)



CHARACTERISTICS

G-B-I-S/V/2/2×4

Type of substrate	Ground (G)
Construction installation method	Ballast structure (B)
Type of construction	Individual (I)
Module orientation	South (S)
Module layout	Vertical (V)
Number of columns	2
Number of PV modules	2×4 (+2)
Type of modules	Standard/Bifacial
Shape of the column	C-profile / CW-profile
Does the construction require additional ballast?	Yes
Is it possible to use a hybrid solution (piling + ballast)?	Yes - possibility of additional ballasting
Minimum number of modules on the structure	8
Height of standard clamps (mm)	35
Thickness of standard clamps (mm)	5
Maximum PV module size (mm)	-
Distribution method	Individual order

Ground structures (G)



LIST OF PARTS - BASE OF CONSTRUCTION



End clamp
35
Nature/Black
KLK50/35ALN
KLK50/35ALCZ



Middle clamp
50 universal
Nature/Black
KLSR50ALN
KLSR50ALCZ



Flange nut
serrated
M8 DIN6923 A2
NSHM8A2



Hexagonal nut
M10 IE
NM10Z



Washer M10 300HV
ISO7093-1 IE
PSZM10Z



Allen screw
M8X100 DIN912 A2
SIM8X100A2



Hexagonal screw
M10X20 IE
SM10X20Z

LIST OF PARTS - OTHER INSTALLATION ELEMENTS



Strut

15

Ballast structure

G-B-I-S/V/2/3×3

TYPE

Individual (I)

MODULE DIRECTION

South (S)

MODULE LAYOUT

Vertical (V)

SUPPORTS NO.

Two

NUMBER OF PV MODULES

3×3 (+3)



SEE ONLINE →



DESCRIPTION

- A multipart ground structure made of Magnelis™ steel designed for soils and areas where additional ballasting is required.
- Excellent for constructing installations above 50 kW that require building permits, and whose components need optimization due to the specific location of the structure.
- The mounting system is constructed from individually selected structural elements, including beams, latches, and legs, allowing for the use of the structure only for predetermined modules and their sizes.
- The screw system used for mounting beams, latches, and legs does not require servicing as long as the installation is carried out according to the instructions.
- Before production, it is necessary to provide a site development plan along with module installation instructions.
- The system is designed for ground installations where the primary criterion for choosing the structure is the need for additional ballasting.
- There is the possibility of applying a hybrid system, allowing for the weighting of the leg/legs in places where it is not possible to drill it/them to a specified depth.

Ground structures (G)



1. Latch
2. Purlin
3. Back leg/support
4. Strut
5. Front leg/support

CHARACTERISTICS

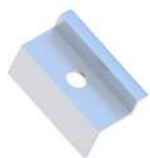
G-B-I-S/V/2/3×3

Type of substrate	Ground (G)
Construction installation method	Ballast structure (B)
Type of construction	Individual (I)
Module orientation	South (S)
Module layout	Vertical (V)
Number of columns	2
Number of PV modules	3×3 (+3)
Type of modules	Standard/Bifacial
Shape of the column	C-profile / CW-profile
Does the construction require additional ballast?	Yes
Is it possible to use a hybrid solution (piling + ballast)?	Yes - possibility of additional ballasting
Minimum number of modules on the structure	9
Height of standard clamps (mm)	35
Thickness of standard clamps (mm)	5
Maximum PV module size (mm)	-
Distribution method	Individual order

Ground structures (G)



LIST OF PARTS - BASE OF CONSTRUCTION



End clamp
35
Nature/Black
KLK50/35ALN
KLK50/35ALCZ



Middle clamp
50 universal
Nature/Black
KLSR50ALN
KLSR50ALCZ



Flange nut
serrated
M8 DIN6923 A2
NSHM8A2



Hexagonal nut
M10 IE
NM10Z



Washer M10 300HV
ISO7093-1 IE
PSZM10Z



Allen screw
M8X100 DIN912 A2
SIM8X100A2



Hexagonal screw
M10X20 IE
SM10X20Z

LIST OF PARTS - OTHER INSTALLATION ELEMENTS



Strut



16

Ballast structure

G-B-I-S/H/2/3×3

TYPE

Individual (I)

MODULE DIRECTION

South (S)

MODULE LAYOUT

Horizontal (H)

SUPPORTS NO.

Two

NUMBER OF PV MODULES

3×3 (+3)



SEE ONLINE →



DESCRIPTION

- A multipart ground structure made of Magnelis™ steel designed for soils and areas where additional ballasting is required.
- Excellent for constructing installations above 50 kW that require building permits, and whose components need optimization due to the specific location of the structure.
- The mounting system is constructed from individually selected structural elements, including beams, latches, and legs, allowing for the use of the structure only for predetermined modules and their sizes.
- The screw system used for mounting beams, latches, and legs does not require servicing as long as the installation is carried out according to the instructions.
- Before production, it is necessary to provide a site development plan along with module installation instructions.
- The system is designed for ground installations where the primary criterion for choosing the structure is the need for additional ballasting.
- There is the possibility of applying a hybrid system, allowing for the weighting of the leg/legs in places where it is not possible to drill it/them to a specified depth.

Ground structures (G)



CHARACTERISTICS

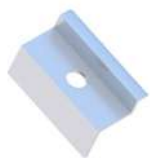
G-B-I-S/H/2/3×3

Type of substrate	Ground (G)
Construction installation method	Ballast structure (B)
Type of construction	Individual (I)
Module orientation	South (S)
Module layout	Horizontal (H)
Number of columns	2
Number of PV modules	3×3 (+3)
Type of modules	Standard/Bifacial
Shape of the column	C-profile / CW-profile
Does the construction require additional ballast?	Yes
Is it possible to use a hybrid solution (piling + ballast)?	Yes - possibility of additional ballasting
Minimum number of modules on the structure	9
Height of standard clamps (mm)	35
Thickness of standard clamps (mm)	5
Maximum PV module size (mm)	-
Distribution method	Individual order

Ground structures (G)



LIST OF PARTS - BASE OF CONSTRUCTION



End clamp
35
Nature/Black
KLK50/35ALN
KLK50/35ALCZ



Middle clamp
50 universal
Nature/Black
KLSR50ALN
KLSR50ALCZ



Flange nut
serrated
M8 DIN6923 A2
NSHM8A2



Hexagonal nut
M10 IE
NM10Z



Washer M10 300HV
ISO7093-1 IE
PSZM10Z



Allen screw
M8X100 DIN912 A2
SIM8X100A2



Hexagonal screw
M10X20 IE
SM10X20Z

LIST OF PARTS - OTHER INSTALLATION ELEMENTS



Strut

17

Ballast structure

G-B-I-S/H/2/4×3

TYPE

Individual (I)

MODULE DIRECTION

South (S)

MODULE LAYOUT

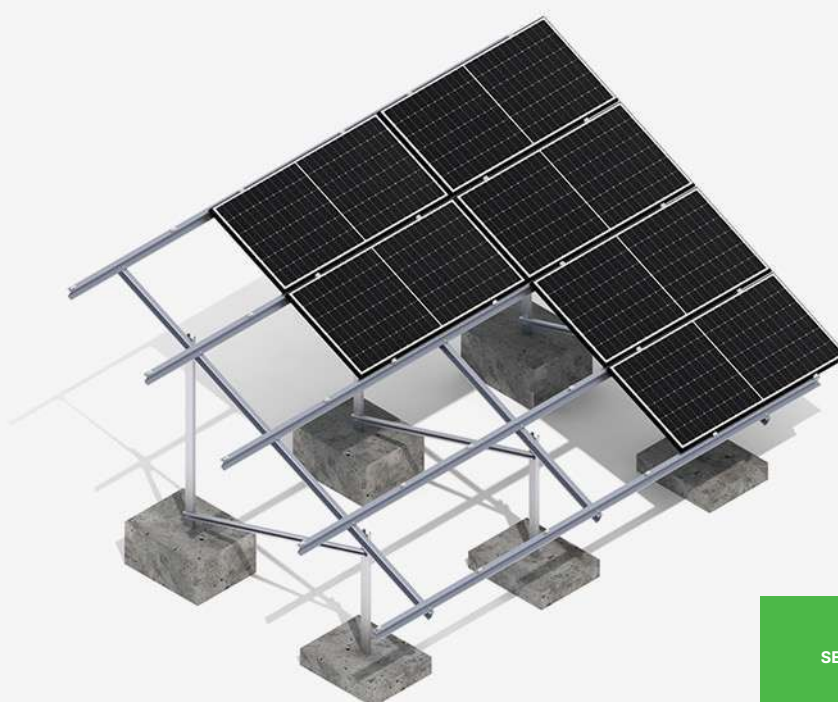
Horizontal (H)

SUPPORTS NO.

Two

NUMBER OF PV MODULES

4×3 (+4)



SEE ONLINE →



DESCRIPTION

- A multipart ground structure made of Magnelis™ steel designed for soils and areas where additional ballasting is required.
- Excellent for constructing installations above 50 kW that require building permits, and whose components need optimization due to the specific location of the structure.
- The mounting system is constructed from individually selected structural elements, including beams, latches, and legs, allowing for the use of the structure only for predetermined modules and their sizes.
- The screw system used for mounting beams, latches, and legs does not require servicing as long as the installation is carried out according to the instructions.
- Before production, it is necessary to provide a site development plan along with module installation instructions.
- The system is designed for ground installations where the primary criterion for choosing the structure is the need for additional ballasting.
- There is the possibility of applying a hybrid system, allowing for the weighting of the leg/legs in places where it is not possible to drill it/them to a specified depth.

Ground structures (G)



CHARACTERISTICS

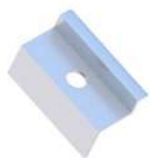
G-B-I-S/H/2/4×3

Type of substrate	Ground (G)
Construction installation method	Ballast structure (B)
Type of construction	Individual (I)
Module orientation	South (S)
Module layout	Horizontal (H)
Number of columns	2
Number of PV modules	4×3 (+4)
Type of modules	Standard/Bifacial
Shape of the column	C-profile / CW-profile
Does the construction require additional ballast?	Yes
Is it possible to use a hybrid solution (piling + ballast)?	Yes - possibility of additional ballasting
Minimum number of modules on the structure	12
Height of standard clamps (mm)	35
Thickness of standard clamps (mm)	5
Maximum PV module size (mm)	-
Distribution method	Individual order

Ground structures (G)



LIST OF PARTS - BASE OF CONSTRUCTION



End clamp
35
Nature/Black
KLK50/35ALN
KLK50/35ALCZ



Middle clamp
50 universal
Nature/Black
KLSR50ALN
KLSR50ALCZ



Flange nut
serrated
M8 DIN6923 A2
NSHM8A2



Hexagonal nut
M10 IE
NM10Z



Washer M10 300HV
ISO7093-1 IE
PSZM10Z



Allen screw
M8X100 DIN912 A2
SIM8X100A2



Hexagonal screw
M10X20 IE
SM10X20Z

LIST OF PARTS - OTHER INSTALLATION ELEMENTS



Strut

18

Ballast structure

G-B-I-S/H/2/5×4

TYPE

Individual (I)

MODULE DIRECTION

South (S)

MODULE LAYOUT

Horizontal (H)

SUPPORTS NO.

Two

NUMBER OF PV MODULES

5×4 (+4)



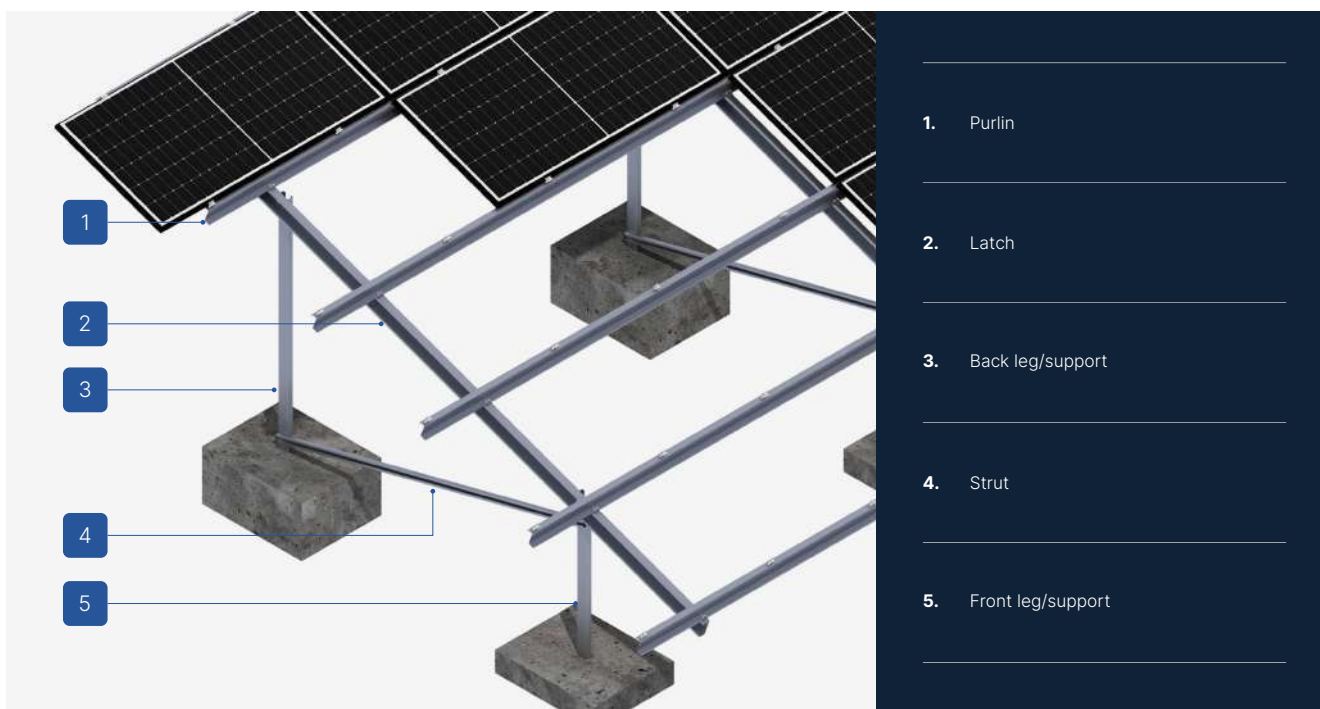
SEE ONLINE →



DESCRIPTION

- A multipart ground structure made of Magnelis™ steel designed for soils and areas where additional ballasting is required.
- Excellent for constructing installations above 50 kW that require building permits, and whose components need optimization due to the specific location of the structure.
- The mounting system is constructed from individually selected structural elements, including beams, latches, and legs, allowing for the use of the structure only for predetermined modules and their sizes.
- The screw system used for mounting beams, latches, and legs does not require servicing as long as the installation is carried out according to the instructions.
- Before production, it is necessary to provide a site development plan along with module installation instructions.
- The system is designed for ground installations where the primary criterion for choosing the structure is the need for additional ballasting.
- There is the possibility of applying a hybrid system, allowing for the weighting of the leg/legs in places where it is not possible to drill it/them to a specified depth.

Ground structures (G)



CHARACTERISTICS

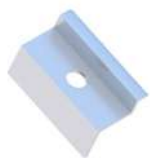
G-B-I-S/H/2/5×4

Type of substrate	Ground (G)
Construction installation method	Ballast structure (B)
Type of construction	Individual (I)
Module orientation	South (S)
Module layout	Horizontal (H)
Number of columns	2
Number of PV modules	5×4 (+4)
Type of modules	Standard/Bifacial
Shape of the column	C-profile / CW-profile
Does the construction require additional ballast?	Yes
Is it possible to use a hybrid solution (piling + ballast)?	Yes - possibility of additional ballasting
Minimum number of modules on the structure	20
Height of standard clamps (mm)	35
Thickness of standard clamps (mm)	5
Maximum PV module size (mm)	-
Distribution method	Individual order

Ground structures (G)



LIST OF PARTS - BASE OF CONSTRUCTION



End clamp
35
Nature/Black
KLK50/35ALN
KLK50/35ALCZ



Middle clamp
50 universal
Nature/Black
KLSR50ALN
KLSR50ALCZ



Flange nut
serrated
M8 DIN6923 A2
NSHM8A2



Hexagonal nut
M10 IE
NM10Z



Washer M10 300HV
ISO7093-1 IE
PSZM10Z



Allen screw
M8X100 DIN912 A2
SIM8X100A2



Hexagonal screw
M10X20 IE
SM10X20Z

LIST OF PARTS - OTHER INSTALLATION ELEMENTS



Strut



19

Ballast structure

G-B-I-S/H/2/6×6

TYPE

Individual (I)

MODULE DIRECTION

South (S)

MODULE LAYOUT

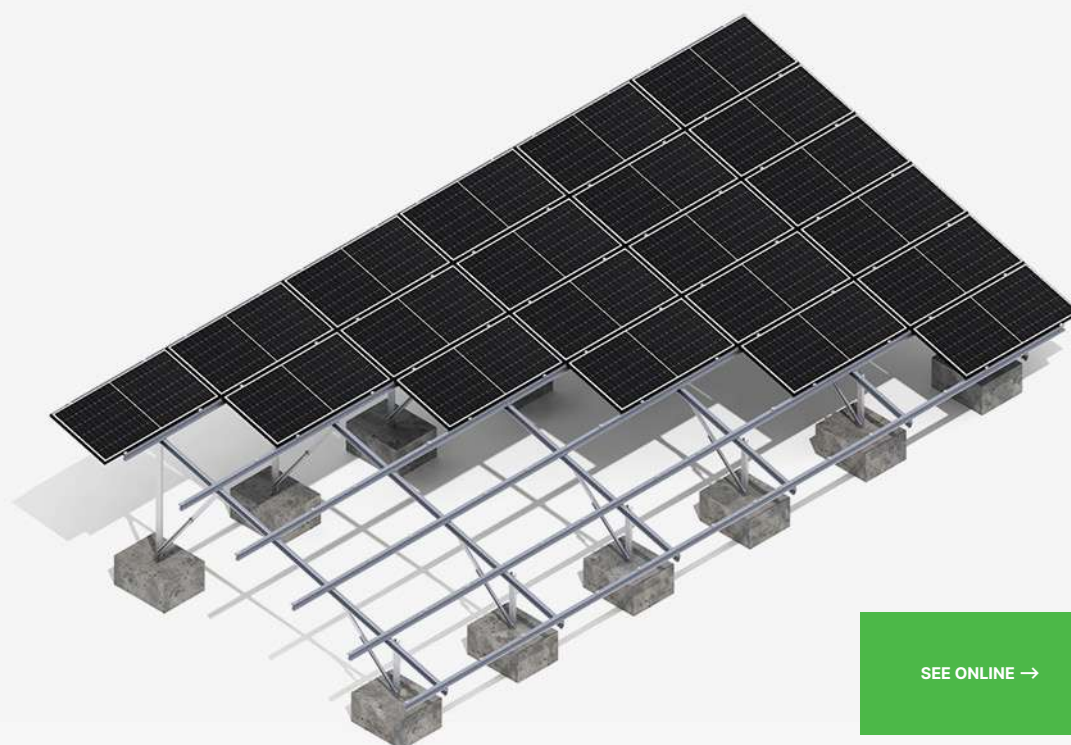
Horizontal (H)

SUPPORTS NO.

Two

NUMBER OF PV MODULES

6×6 (+6)



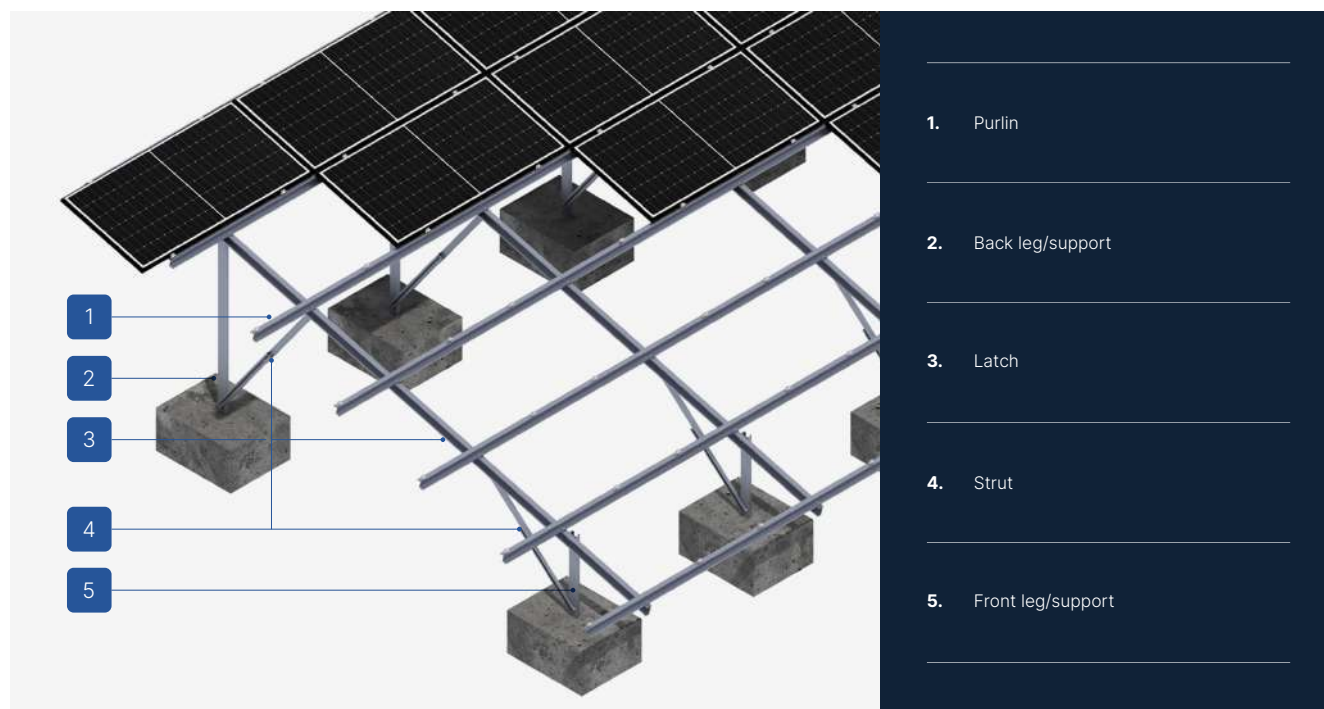
SEE ONLINE →



DESCRIPTION

- A multipart ground structure made of Magnelis™ steel designed for soils and areas where additional ballasting is required.
- Excellent for constructing installations above 50 kW that require building permits, and whose components need optimization due to the specific location of the structure.
- The mounting system is constructed from individually selected structural elements, including beams, latches, and legs, allowing for the use of the structure only for predetermined modules and their sizes.
- The screw system used for mounting beams, latches, and legs does not require servicing as long as the installation is carried out according to the instructions.
- Before production, it is necessary to provide a site development plan along with module installation instructions.
- The system is designed for ground installations where the primary criterion for choosing the structure is the need for additional ballasting.
- There is the possibility of applying a hybrid system, allowing for the weighting of the leg/legs in places where it is not possible to drill it/them to a specified depth.

Ground structures (G)



CHARACTERISTICS

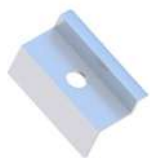
G-B-I-S/H/2/6×6

Typ aplikacji / Use case	Ground (G)
Sposób montażu / Installation method	Ballast structure (B)
Typ aplikacji konstrukcji / Construction application	Individual (I)
Orientacja / Orientation	South (S)
Widok / View	Horizontal (H)
Liczba słupów / Number of columns	2
Liczba modułów / Number of modules	6×6 (+6)
Typ modułu / Module type	Standard/Bifacial
Typ słupa / Column type	C-profile / CW-profile
Czy konstrukcja jest gotowa do montażu balastu? / Is the structure ready for ballast installation?	Yes
Czy jest możliwość dodatkowego obciążenia? / Is there a possibility of additional ballasting?	Yes - possibility of additional ballasting
Minimalna wysokość montażu / Minimum installation height	36
Wysokość słupa / Column height (mm)	35
Wysokość słupa / Column height (mm)	5
Maksymalna szerokość / Maximum width (mm)	-
Sposób dostawy / Delivery method	Individual order

Ground structures (G)



LIST OF PARTS - BASE OF CONSTRUCTION



End clamp
35
Nature/Black
KLK50/35ALN
KLK50/35ALCZ



Middle clamp
50 universal
Nature/Black
KLSR50ALN
KLSR50ALCZ



Flange nut
serrated
M8 DIN6923 A2
NSHM8A2



Hexagonal nut
M10 IE
NM10Z



Washer M10 300HV
ISO7093-1 IE
PSZM10Z



Allen screw
M8X100 DIN912 A2
SIM8X100A2



Hexagonal screw
M10X20 IE
SM10X20Z

LIST OF PARTS - OTHER INSTALLATION ELEMENTS



Strut

20

Ballast structure

G-B-I-EW/V/3/2×4-2×4

TYPE

Individual (I)

MODULE DIRECTION

East-west (EW)

MODULE LAYOUT

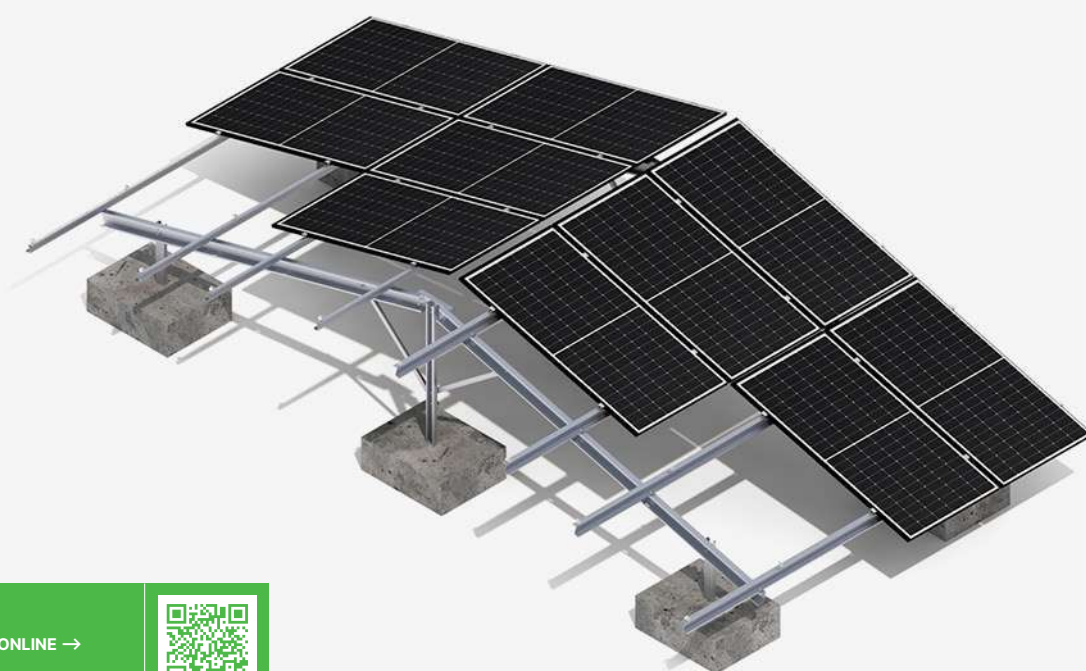
Vertical (V)

SUPPORTS NO.

Three

NUMBER OF PV MODULES

2×4 + 2×4 (+4)



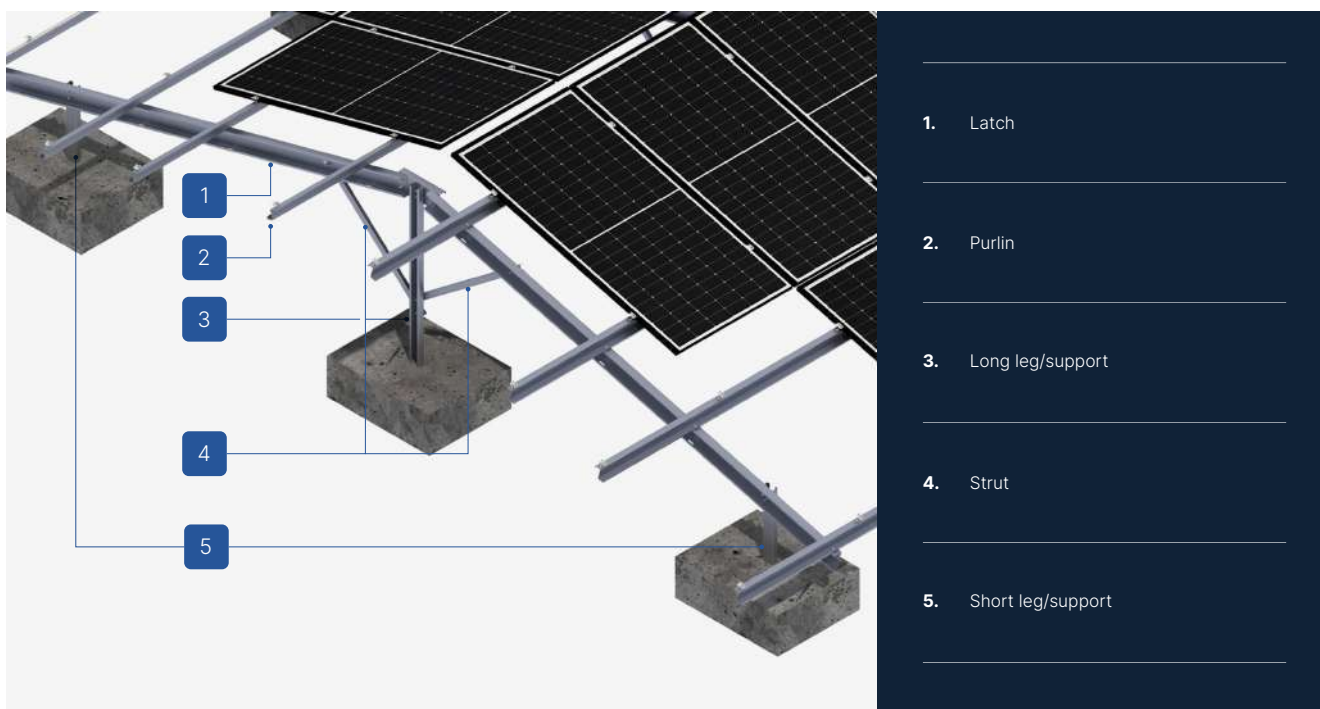
SEE ONLINE →



DESCRIPTION

- A multipart ground structure made of Magnelis™ steel designed for soils and areas where additional ballasting is required.
- Excellent for constructing installations above 50 kW that require building permits, and whose components need optimization due to the specific location of the structure.
- The mounting system is constructed from individually selected structural elements, including beams, latches, and legs, allowing for the use of the structure only for predetermined modules and their sizes.
- The screw system used for mounting beams, latches, and legs does not require servicing as long as the installation is carried out according to the instructions.
- Before production, it is necessary to provide a site development plan along with module installation instructions.
- The system is designed for ground installations where the primary criterion for choosing the structure is the need for additional ballasting.
- There is the possibility of applying a hybrid system, allowing for the weighting of the leg/legs in places where it is not possible to drill it/them to a specified depth.

Ground structures (G)



CHARACTERISTICS

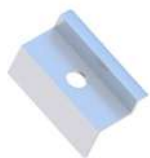
G-B-I-EW/V/3/2×4-2×4

Type of substrate	Ground (G)
Construction installation method	Ballast structure (B)
Type of construction	Individual (I)
Module orientation	East-west (EW)
Module layout	Vertical (V)
Number of columns	3
Number of PV modules	2×4 + 2×4 (+4)
Type of modules	Standard/Bifacial
Shape of the column	C-profile / CW-profile
Does the construction require additional ballast?	Yes
Is it possible to use a hybrid solution (piling + ballast)?	Yes - possibility of additional ballasting
Minimum number of modules on the structure	16
Height of standard clamps (mm)	35
Thickness of standard clamps (mm)	5
Maximum PV module size (mm)	-
Distribution method	Individual order

Ground structures (G)



LIST OF PARTS - BASE OF CONSTRUCTION



End clamp
35
Nature/Black
KLK50/35ALN
KLK50/35ALCZ



Middle clamp
50 universal
Nature/Black
KLSR50ALN
KLSR50ALCZ



Flange nut
serrated
M8 DIN6923 A2
NSHM8A2



Hexagonal nut
M10 IE
NM10Z



Washer M10 300HV
ISO7093-1 IE
PSZM10Z



Allen screw
M8X100 DIN912 A2
SIM8X100A2



Hexagonal screw
M10X20 IE
SM10X20Z

LIST OF PARTS - OTHER INSTALLATION ELEMENTS



Strut

21

Ballast structure

G-B-I-EW/H/3/3×3-3×3

TYPE

Individual (I)

MODULE DIRECTION

East-west (EW)

MODULE LAYOUT

Horizontal (H)

SUPPORTS NO.

Three

NUMBER OF PV MODULES

3×3 + 3×3 (+6)



SEE ONLINE →



DESCRIPTION

- A multipart ground structure made of Magnelis™ steel designed for soils and areas where additional ballasting is required.
- Excellent for constructing installations above 50 kW that require building permits, and whose components need optimization due to the specific location of the structure.
- The mounting system is constructed from individually selected structural elements, including beams, latches, and legs, allowing for the use of the structure only for predetermined modules and their sizes.
- The screw system used for mounting beams, latches, and legs does not require servicing as long as the installation is carried out according to the instructions.
- Before production, it is necessary to provide a site development plan along with module installation instructions.
- The system is designed for ground installations where the primary criterion for choosing the structure is the need for additional ballasting.
- There is the possibility of applying a hybrid system, allowing for the weighting of the leg/legs in places where it is not possible to drill it/them to a specified depth.

Ground structures (G)



CHARACTERISTICS

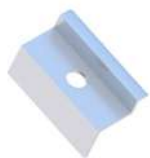
G-B-I-EW/H/3/3×3-3×3

Type of substrate	Ground (G)
Construction installation method	Ballast structure (B)
Type of construction	Individual (I)
Module orientation	East-west (EW)
Module layout	Horizontal (H)
Number of columns	3
Number of PV modules	3×3 + 3×3 (+6)
Type of modules	Standard/Bifacial
Shape of the column	C-profile / CW-profile
Does the construction require additional ballast?	Yes
Is it possible to use a hybrid solution (piling + ballast)?	Yes - possibility of additional ballasting
Minimum number of modules on the structure	18
Height of standard clamps (mm)	35
Thickness of standard clamps (mm)	5
Maximum PV module size (mm)	-
Distribution method	Individual order

Ground structures (G)



LIST OF PARTS - BASE OF CONSTRUCTION



End clamp
35
Nature/Black
KLK50/35ALN
KLK50/35ALCZ



Middle clamp
50 universal
Nature/Black
KLSR50ALN
KLSR50ALCZ



Flange nut
serrated
M8 DIN6923 A2
NSHM8A2



Hexagonal nut
M10 IE
NM10Z



Washer M10 300HV
ISO7093-1 IE
PSZM10Z



Allen screw
M8X100 DIN912 A2
SIM8X100A2



Hexagonal screw
M10X20 IE
SM10X20Z

LIST OF PARTS - OTHER INSTALLATION ELEMENTS



Strut

22

Ballast structure

G-B-I-EW/H/3/4×4-4×4

TYPE

Individual (I)

MODULE DIRECTION

East-west (EW)

MODULE LAYOUT

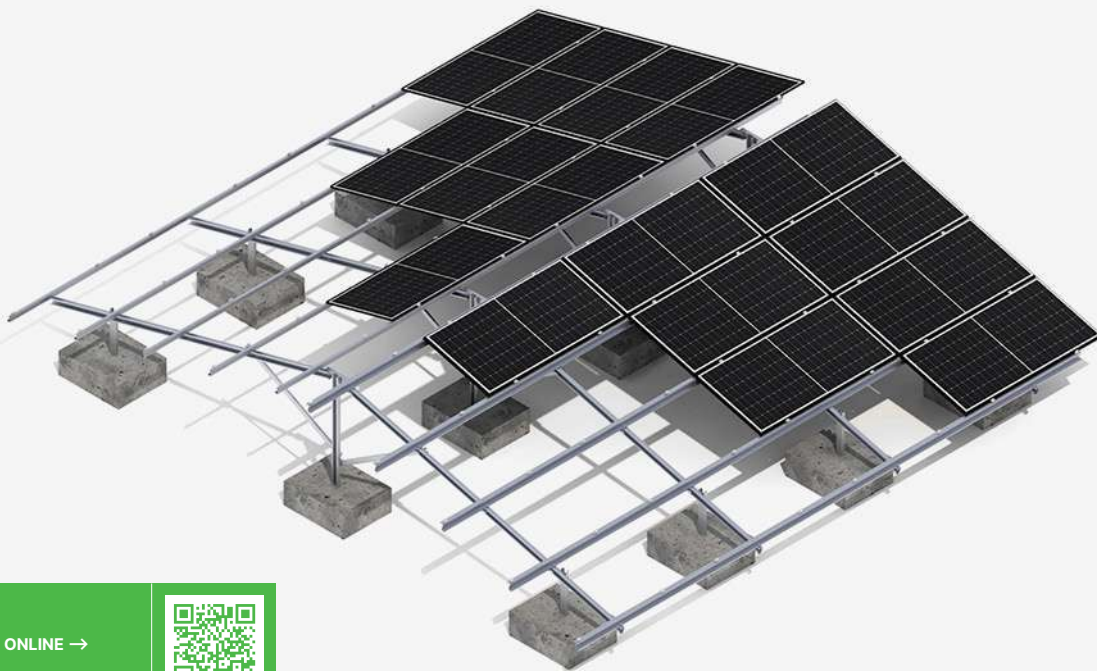
Horizontal (H)

SUPPORTS NO.

Three

NUMBER OF PV MODULES

4×4 + 4×4 (+8)



SEE ONLINE →



DESCRIPTION

- A multipart ground structure made of Magnelis™ steel designed for soils and areas where additional ballasting is required.
- Excellent for constructing installations above 50 kW that require building permits, and whose components need optimization due to the specific location of the structure.
- The mounting system is constructed from individually selected structural elements, including beams, latches, and legs, allowing for the use of the structure only for predetermined modules and their sizes.
- The screw system used for mounting beams, latches, and legs does not require servicing as long as the installation is carried out according to the instructions.
- Before production, it is necessary to provide a site development plan along with module installation instructions.
- The system is designed for ground installations where the primary criterion for choosing the structure is the need for additional ballasting.
- There is the possibility of applying a hybrid system, allowing for the weighting of the leg/legs in places where it is not possible to drill it/them to a specified depth.

Ground structures (G)

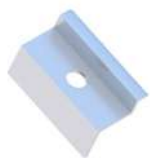
**G-B-I-EW/H/3/4×4-4×4**

Type of substrate	Ground (G)
Construction installation method	Ballast structure (B)
Type of construction	Individual (I)
Module orientation	East-west (EW)
Module layout	Horizontal (H)
Number of columns	3
Number of PV modules	4×4 + 4×4 (+8)
Type of modules	Standard/Bifacial
Shape of the column	C-profile / CW-profile
Does the construction require additional ballast?	Yes
Is it possible to use a hybrid solution (piling + ballast)?	Yes - possibility of additional ballasting
Minimum number of modules on the structure	32
Height of standard clamps (mm)	35
Thickness of standard clamps (mm)	5
Maximum PV module size (mm)	-
Distribution method	Individual order

Ground structures (G)



LIST OF PARTS - BASE OF CONSTRUCTION



End clamp
35
Nature/Black
KLK50/35ALN
KLK50/35ALCZ



Middle clamp
50 universal
Nature/Black
KLSR50ALN
KLSR50ALCZ



Flange nut
serrated
M8 DIN6923 A2
NSHM8A2



Hexagonal nut
M10 IE
NM10Z



Washer M10 300HV
ISO7093-1 IE
PSZM10Z



Allen screw
M8X100 DIN912 A2
SIM8X100A2



Hexagonal screw
M10X20 IE
SM10X20Z

LIST OF PARTS - OTHER INSTALLATION ELEMENTS



Strut

Our representatives



REGION ↘

CONTACT ↘

Zachodniopomorskie, Pomorskie,
Kujawsko-Pomorskie, Lubuskie
Wielkopolskie

Sebastian Jędraszek
+48 724 651 405
sebastian.jedraszek@rbtsolar.com

Podlaskie, Warmińsko-Mazurskie,
Mazowieckie, Łódzkie

Adrian Ochenkowski
+48 724 270 337
adrian.ochenkowski@rbtsolar.com

Dolnośląskie, Śląskie,
Opolskie, Czechy

Tomasz Juszczyk
+48 724 270 305
tomasz.juszczyk@rbtsolar.com

Małopolskie, Podkarpackie,
Lubelskie, Świętokrzyskie

Radosław Mazurek
+48 885 582 057
radoslaw.mazurek@rbtsolar.com

Lithuania, Latvia, Estonia

Andrejus Krutko
+370 684 19934
andrejus.krutko@rbtsolar.com

Other countries

Dana Kushel
+48 724 652 204
dana.kushel@rbtsolar.com



WE ARE PART OF GRUPA/**rex**bud

CONTACT

+48 724 625 200
biuro@rbtsolar.com
rbtsolar.com

PRODUCTION FACILITY

ul. A. Struga 14
95-100 Zgierz
Poland
NIP 732 221 39 23



The information contained in this document is of an illustrative nature, primarily specifying the technical possibilities according to the presented assumptions, and does not constitute a commercial offer within the meaning of Article 66 para. 1 of the Polish Civil Code. We reserve the right to make technical changes related to product development, as well as changes in product prices and their availability. Please check the rbsolar.com website, in the Sales Department, or with the Sales Representatives of RBT Solar Sp. z o.o. to verify whether the product parameters remain current at the time of placing an order. Detailed information about the technical parameters of individual products can be found in separate product sheets and on the rbsolar.com website.

[Back to catalog ←](#)