

Facade structures



Facade structures (FA)

CARD NO.	CONSTRUCION TYPE	MODULE DIRECTION	MODULE LAYOUT	INSTALLATION	MOUNTING BASE	PAGE
01	Universal (US)	South (S)	Vertical (V)	Long side (LA)	Concrete, ceramics, silicate (CCS)	3
02	Universal (US)	South (S)	Horizontal (H)	Long side (LA)	Concrete, ceramics, silicate (CCS)	
03	Individual (I)	South (S)	Vertical (V)	Long side (LA)	Sandwich panel, metal sheet (SP)	6
04	Individual (I)	South (S)	Horizontal (H)	Long side (LA)	Sandwich panel, metal sheet (SP)	

[Find a representative →](#)

[Legal note →](#)



01 Facade structure

FA-US-S/V/LA/CCS

TYPE

Universal (US)

MODULE DIRECTION

South (S)

MODULE LAYOUT

Vertical (V)

INSTALLATION

Long side (LA)

MOUNTING BASE

Concrete, ceramics, silicate (CCS)



SEE ONLINE →



DESCRIPTION

- A multi-part facade structure made of aerated concrete, ceramics or silicate and further insulated with wool or polystyrene.
- An invasive system composed of adjustable consoles, which are mounted to the facade using screws of appropriate length, and then to which profiles (on which PV modules, previously equipped in necessary mounts, are suspended) are attached.
- A universal mounting system composed of adjustable, telescopic elements, enabling the use of structures with modules of various power and sizes.
- The structure has been designed to shorten the base assembly and, at the same time, make the number of mounting points to the facade as small as possible.

© At the customer's request, each installation using a structure is calculated by our Technical Department in terms of its load on the facade, as well as the method and number of points that constitute the basis for the installation of profiles, to which the modules are mounted.



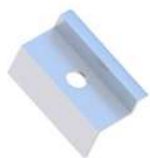
CHARACTERISTICS

FA-US-S/V/LA/CCS

Destination	Facades (FA)
Type of construction	Universal (US)
Module orientation	South (S)
Module layout	Vertical (V)
How to install a PV module	Long side (LA)
Mounting base	Concrete, ceramics, silicate (CCS)
Module type	Standard/Bifacial
Minimum number of PV modules	1
Standard clamps height (mm)	35
Standard clamps width (mm)	5
Maximum PV module length (mm)	-
Distribution	Available in stock



LIST OF PARTS - BASE OF CONSTRUCTION



End clamp
35
Nature/Black
KLK50/35ALN
KLK50/35ALCZ



Middle clamp
50 universal
Nature/Black
KLSR50ALN
KLSR50ALCZ



Self-locking nut
M8 DIN985 A2
NSHM8A2



Hexagonal nut
M10 IE
NM10Z



Washer M10 300HV
ISO7093-1 IE
PSZM10Z



Allen screw
M8X100 DIN912 A2
SIM8X100A2



Hexagonal screw
M10X20 IE
SM10X20Z



03

Facade structure

FA-I-S/V/LA/SP

TYPE

Individual (I)

MODULE DIRECTION

South (S)

MODULE LAYOUT

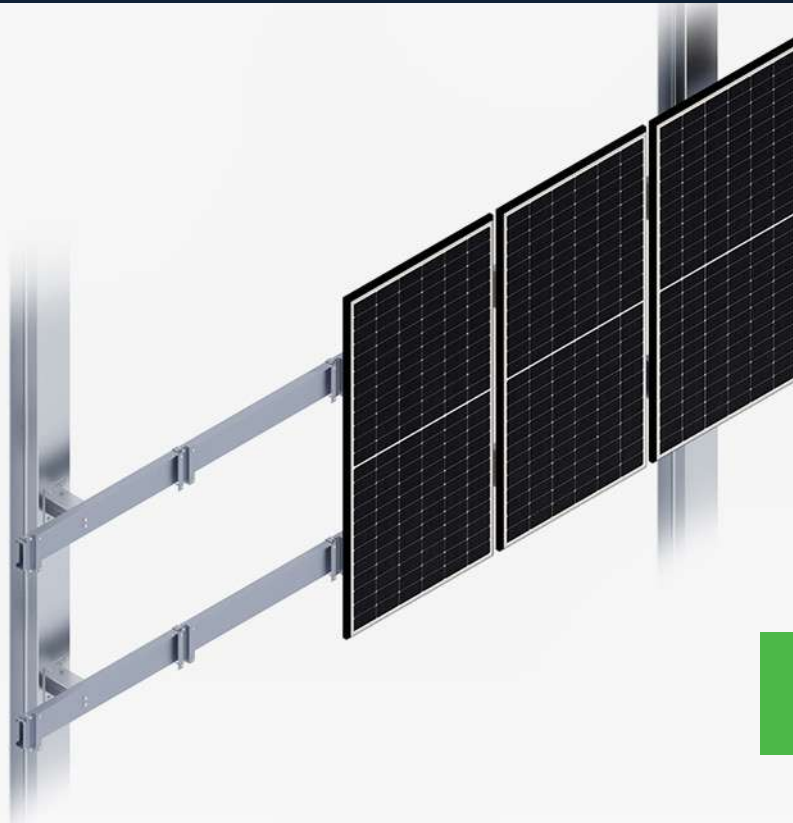
Vertical (V)

INSTALLATION

Long side (LA)

MOUNTING BASE

Sandwich panel, metal sheet (SP)

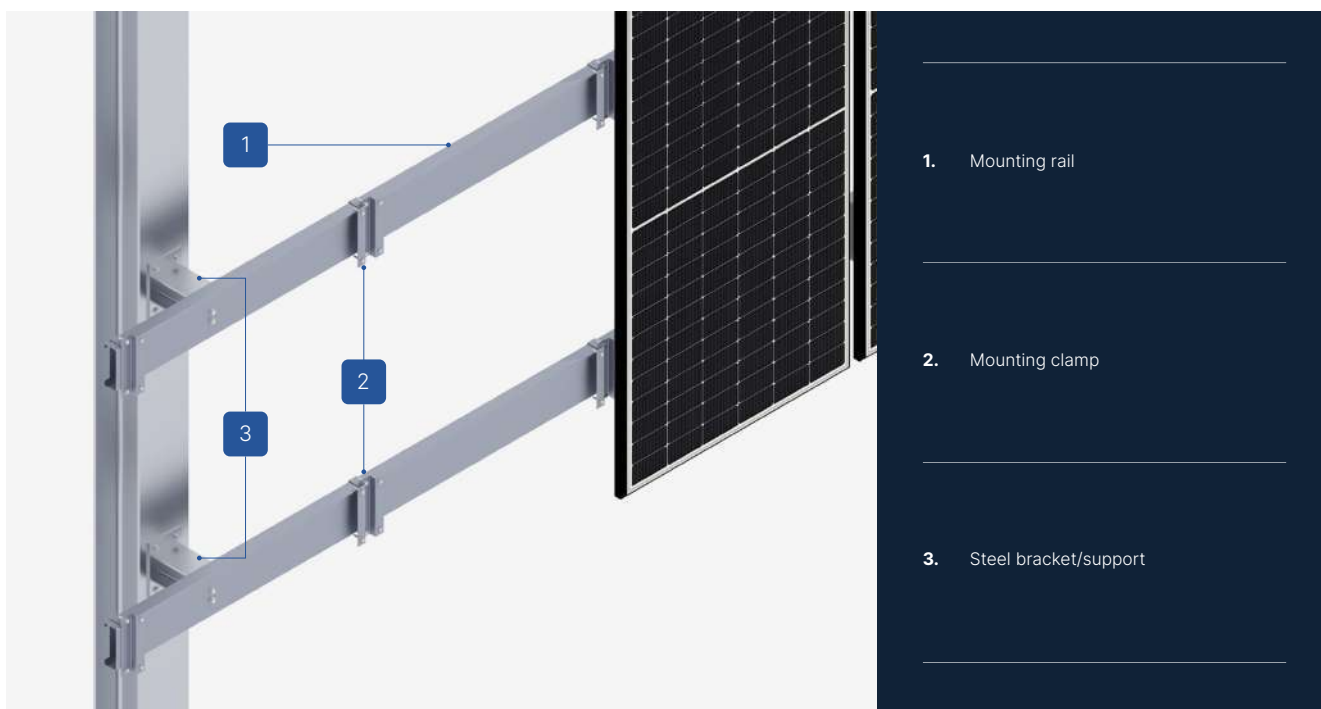


SEE ONLINE →



OPIS KONSTRUKCJI

- A multi-part facade structure made of Magnelis™ sheet, designed for facades constructed using sandwich panel or trapezoidal sheet technology.
- An invasive system composed of adjustable consoles, which are mounted to the facade using screws of appropriate length, and then to which profiles (on which PV modules, previously equipped in necessary mounts, are suspended) are attached.
- A universal mounting system composed of adjustable, telescopic elements, enabling the use of structures with modules of various power and sizes.
- A system designed for facades where the basis for the construction choice is the impossibility of applying installation mounting on the roof or ground.
- The structure has been designed to shorten the base assembly and, at the same time, make the number of mounting points to the facade as small as possible.



CHARACTERISTICS

FA-I-S/V/LA/SP

Destination	Facades (FA)
Type of construction	Individual (US)
Module orientation	South (S)
Module layout	Vertical (V)
How to install a PV module	Long side (LA)
Mounting base	Sandwich panel, metal sheet (SP)
Module type	Standard/Bifacial
Minimum number of PV modules	1
Standard clamps height (mm)	35
Standard clamps width (mm)	5
Maximum PV module length (mm)	-
Distribution	Individual order

Facade structures (FA)



LIST OF PARTS - BASE OF CONSTRUCTION



Self-locking nut
M8 DIN985 A2

NSHM8A2



Hexagonal nut
M10 IE

NM10Z



Washer M10 300HV
ISO7093-1 IE

PSZM10Z



Round washer
A2 8.4 DIN125A

PPM8A2



Hexagonal screw
M8X20 DIN933 A2

SM8X20A2



Hexagonal screw
M10X20 IE

SM10X20Z

Our representatives



REGION ↘

CONTACT ↘

Zachodniopomorskie, Pomorskie,
Kujawsko-Pomorskie, Lubuskie
Wielkopolskie

Sebastian Jędraszek
+48 724 651 405
sebastian.jedraszek@rbtsolar.com

Podlaskie, Warmińsko-Mazurskie,
Mazowieckie, Łódzkie

Adrian Ochenkowski
+48 724 270 337
adrian.ochenkowski@rbtsolar.com

Dolnośląskie, Śląskie,
Opolskie, Czechy

Tomasz Juszczyk
+48 724 270 305
tomasz.juszczyk@rbtsolar.com

Małopolskie, Podkarpackie,
Lubelskie, Świętokrzyskie

Radosław Mazurek
+48 885 582 057
radoslaw.mazurek@rbtsolar.com

Lithuania, Latvia, Estonia

Andrejus Krutko
+370 684 19934
andrejus.krutko@rbtsolar.com

Other countries

Dana Kushel
+48 724 652 204
dana.kushel@rbtsolar.com



WE ARE PART OF GRUPA/**rex**bud

CONTACT

+48 724 625 200
biuro@rbtsolar.com
rbtsolar.com

PRODUCTION FACILITY

ul. A. Struga 14
95-100 Zgierz
Poland
NIP 732 221 39 23



The information contained in this document is of an illustrative nature, primarily specifying the technical possibilities according to the presented assumptions, and does not constitute a commercial offer within the meaning of Article 66 para. 1 of the Polish Civil Code. We reserve the right to make technical changes related to product development, as well as changes in product prices and their availability. Please check the rbtnsolar.com website, in the Sales Department, or with the Sales Representatives of RBT Solar Sp. z o.o. to verify whether the product parameters remain current at the time of placing an order. Detailed information about the technical parameters of individual products can be found in separate product sheets and on the rbtnsolar.com website.

[Back to catalog ←](#)