



19

Ballast structure

G-B-I-S/H/2/6×6

TYPE

Individual (I)

MODULE DIRECTION

South (S)

MODULE LAYOUT

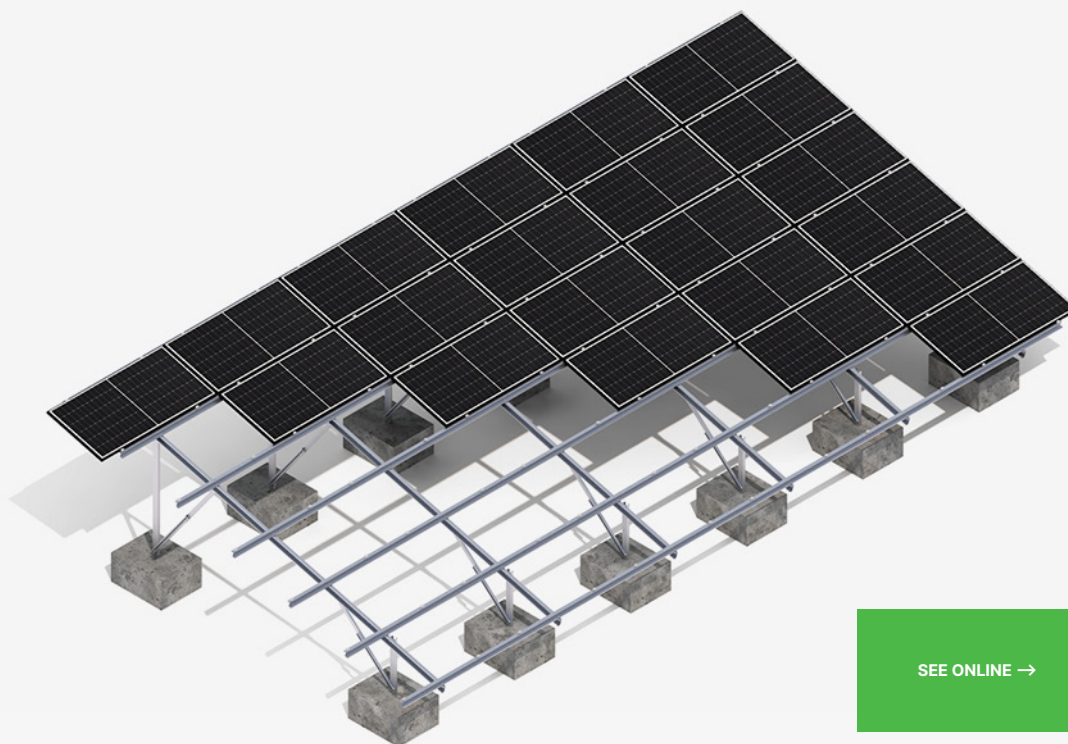
Horizontal (H)


SUPPORTS NO.

Two

NUMBER OF PV MODULES

6×6 (+6)



SEE ONLINE → 

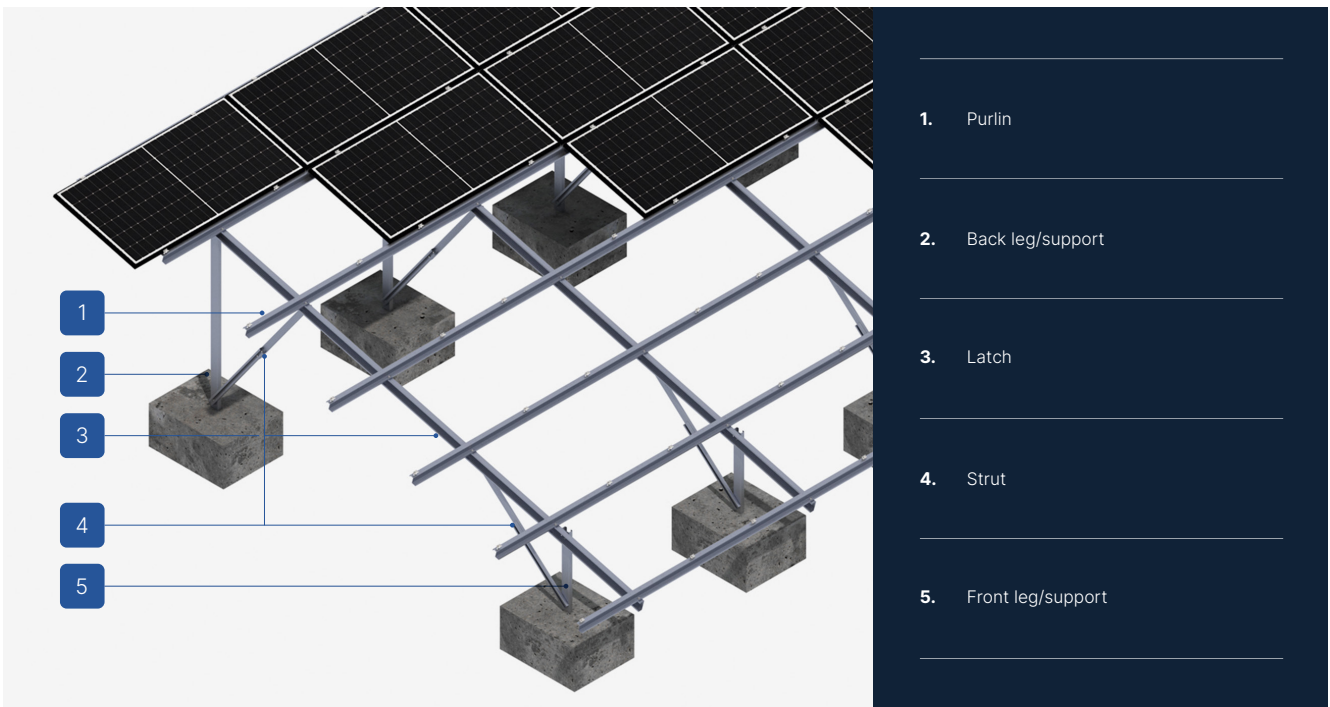
DESCRIPTION

- A multipart ground structure made of Magnelis™ steel designed for soils and areas where additional ballasting is required.
- Excellent for constructing installations above 50 kW that require building permits, and whose components need optimization due to the specific location of the structure.
- The mounting system is constructed from individually selected structural elements, including beams, latches, and legs, allowing for the use of the structure only for predetermined modules and their sizes.
- The screw system used for mounting beams, latches, and legs does not require servicing as long as the installation is carried out according to the instructions.
- Before production, it is necessary to provide a site development plan along with module installation instructions.
- The system is designed for ground installations where the primary criterion for choosing the structure is the need for additional ballasting.
- There is the possibility of applying a hybrid system, allowing for the weighting of the leg/legs in places where it is not possible to drill it/them to a specified depth.

© We recommend that each structure intended for production be previously calculated by our Technical Department regarding its installation in a specified wind and snow zone.

© The structure is designed for individually specified wind and snow zones, with individually selected ballast. To initiate production, a prepayment is required, the amount of which is specified in the offer.

Ground structures (G)



CHARACTERISTICS

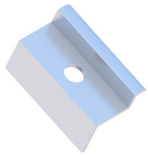
G-B-I-S/H/2/6x6

Typ aplikacji / Use case	Ground (G)
Sposób montażu / Installation method	Ballast structure (B)
Typ aplikacji konstrukcyjnej / Construction application	Individual (I)
Orientacja / Orientation	South (S)
Widok / View	Horizontal (H)
Liczba słupów / Number of columns	2
Liczba modułów / Number of modules	6x6 (+6)
Typ aplikacji / Application type	Standard/Bifacial
Wzrost / Height	C-profile / CW-profile
Czy stosować dodatkowe balastowanie? / Additional ballasting required?	Yes
Czy możliwe jest dodatkowe balastowanie? / Additional ballasting possible?	Yes - possibility of additional ballasting
Minimalna wysokość montażu konstrukcji / Minimum mounting height	36
Wysokość standardowego (rych) / Standard height (mm)	35
Grubość standardowego (rych) / Standard thickness (mm)	5
Maksymalna rozpiętość / Maximum span (mm)	-
Opis konfiguracji / Configuration description	Individual order

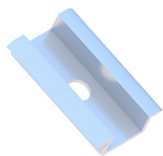
Ground structures (G)



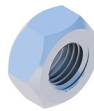
**LIST OF PARTS - BASE OF CONSTRUCTION**



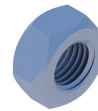
End clamp  
35  
Nature/Black  
**KLK50/35ALN**  
**KLK50/35ALCZ**



Middle clamp  
50 universal  
Nature/Black  
**KLSR50ALN**  
**KLSR50ALCZ**



Flange nut  
serrated  
M8 DIN6923 A2  
**NSHM8A2**



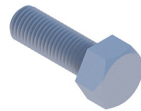
Hexagonal nut  
M10 IE  
**NM10Z**



Washer M10 300HV  
ISO7093-1 IE  
**PSZM10Z**



Allen screw  
M8X100 DIN912 A2  
**SIM8X100A2**



Hexagonal screw  
M10X20 IE  
**SM10X20Z**

**LIST OF PARTS - OTHER INSTALLATION ELEMENTS**



Strut