



01

Piled structure

G-P-US-S/V/2/MAX2210×1200/2×1
G-P-US-S/V/2/MAX2210×1200/2×2

TYPE

Universal (US)

MODULE DIRECTION

South (S)

MODULE LAYOUT

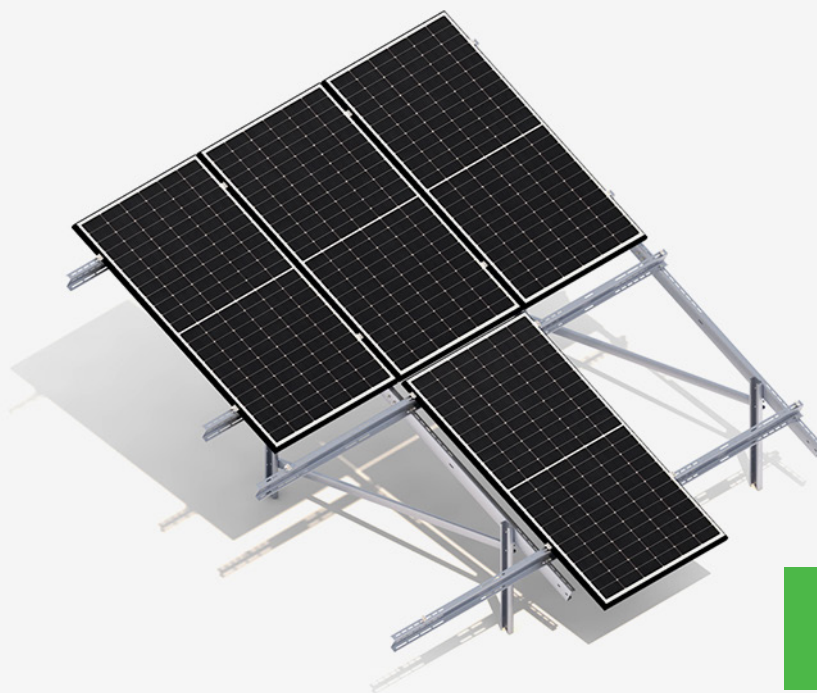
Vertical (V)

SUPPORTS NO.

Two

NO. / WIDTH (MAX) OF PV MODULES

2×1 and/or 2×2 / 2210×1200



SEE ONLINE →



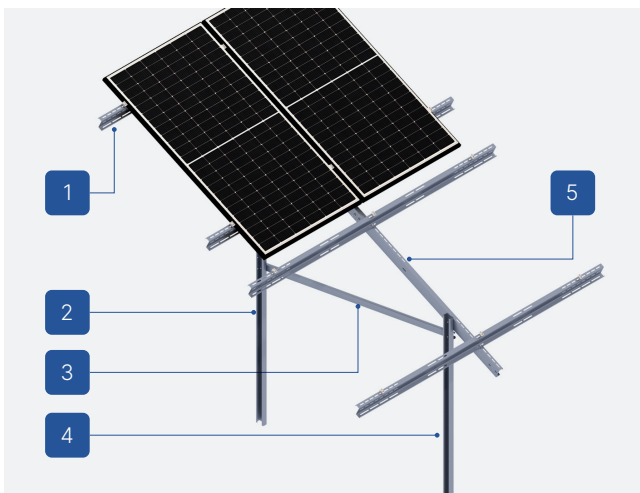
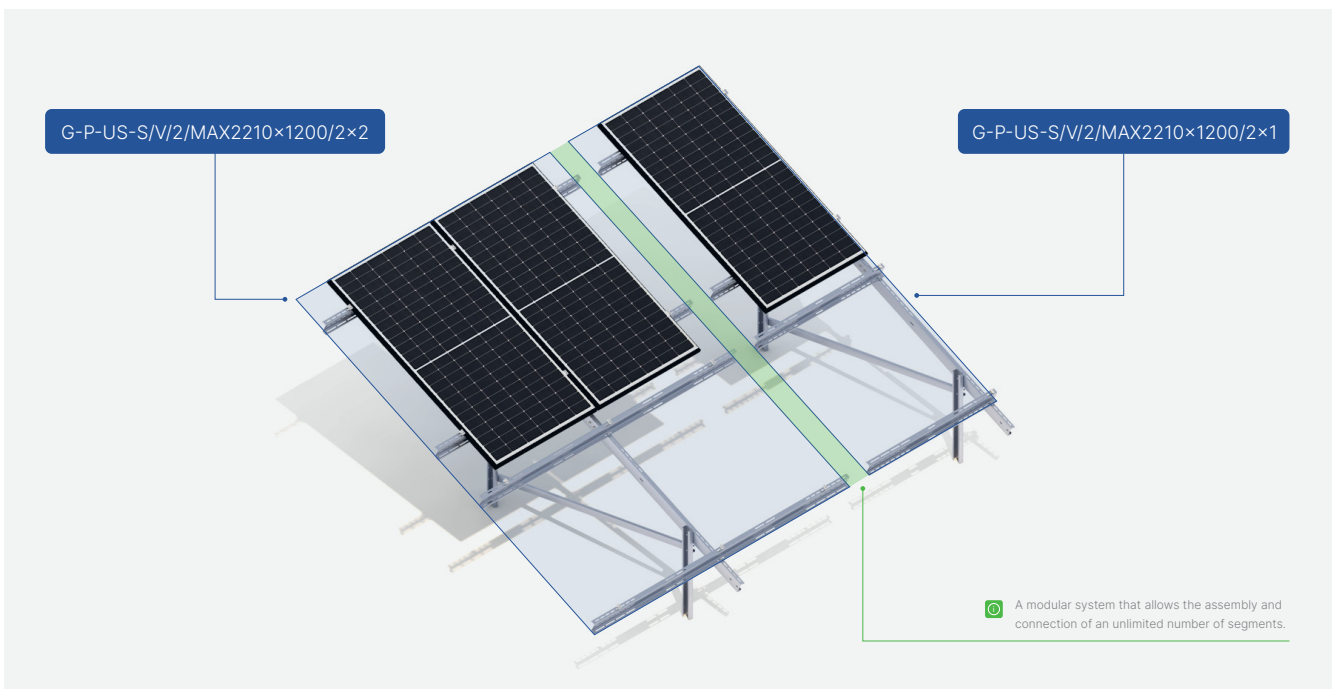
DESCRIPTION

- A universal mounting system built with adjustable, telescopic beams allowing for the use of structures for modules of different power and size.
- A multipart ground structure made of Magnelis™ steel designed for soil, piled without the need for additional ballasting.
- Excellent for constructing installations up to 50 kW that require quick delivery of structures to the construction site.
- The screw system used for mounting beams, latches, and posts does not require servicing as long as the installation is carried out according to the instructions.
- Available in stock with piling up to 1500 mm.
- A construction system for which assembly requires assembling a minimum of two construction segments - segment 2×2 and/or 2×1.
- A modular system that allows the assembly and connection of an unlimited number of segments.
- The system is designed for ground installations where the primary criterion for choosing the structure is the inability to use additional ballast.
- The possibility of using a hybrid system in which there is an option to load the column/columns with ballast in places where it is not possible to drive stakes to a specified depth.

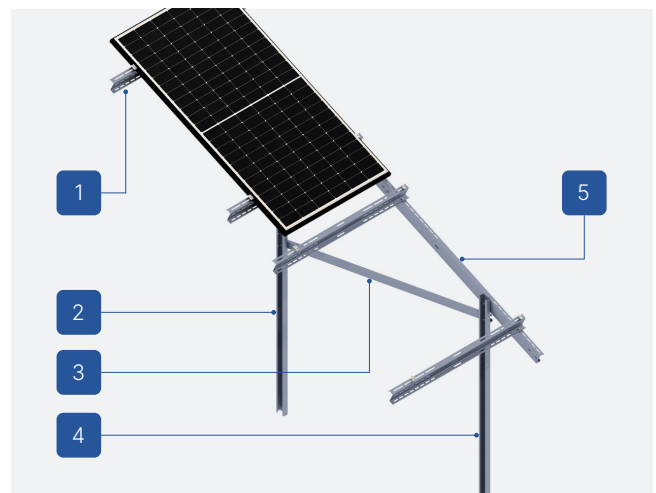
© We recommend that each structure intended for production be previously calculated by our Technical Department regarding its installation in a specific wind and snow zone, as well as based on geotechnical conditions examined beforehand.

© The structure is designed for wind and snow zones specified as W1S2, with piling not deeper than 1500. To initiate production, no prepayment is required, unlike constructions produced for individual orders.

Ground structures (G)



1. Purlin
2. Back leg/support
3. Zastrzał przód-tył
4. Front leg/support
5. Latch



1. Purlin
2. Back leg/support
3. Zastrzał przód-tył
4. Front leg/support
5. Latch

Ground structures (G)



CHARACTERISTICS

G-P-US-S/V/2/MAX2210×1200

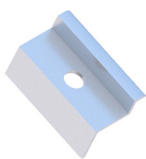
Type of substrate	Ground (G)
Construction installation method	Piled structure (P)
Type of construction	Universal (US)
Module orientation	South (S)
Module layout	Vertical (V)
Type of modules	Standard/Bifacial
Shape of the column	C-profile
Does the construction require additional ballast?	No
Is it possible to use a hybrid solution (piling + ballast)?	Yes - possibility of additional ballasting
Height of standard clamps (mm)	35
Thickness of standard clamps (mm)	5
Maximum PV module size (mm)	2210×1200
Distribution method	Available in stock

2×1

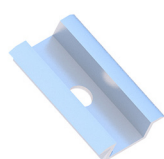
2×2

Minimum number of modules on the structure	2 (+2)	4 (+4)
--	--------	--------

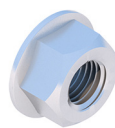
LIST OF PARTS - BASE OF CONSTRUCTION



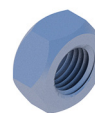
End clamp
35
Nature/Black
KLK50/35ALN
KLK50/35ALCZ



Middle clamp
50 universal
Nature/Black
KLSR50ALN
KLSR50ALCZ



Flange nut
serrated
M8 DIN6923 A2
NKM8A2



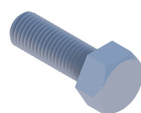
Hexagonal nut
M10 IE
NM10Z



Washer M10 300HV
ISO7093-1 IE
PSZM10Z



Allen screw
M8X100 DIN912 A2
SIM8X100A2



Hexagonal screw
M10X20 IE
SM10X20Z