



03

Facade structure

FA-I-S/V/LA/SP

TYPE

Individual (I)

MODULE DIRECTION

South (S)

MODULE LAYOUT

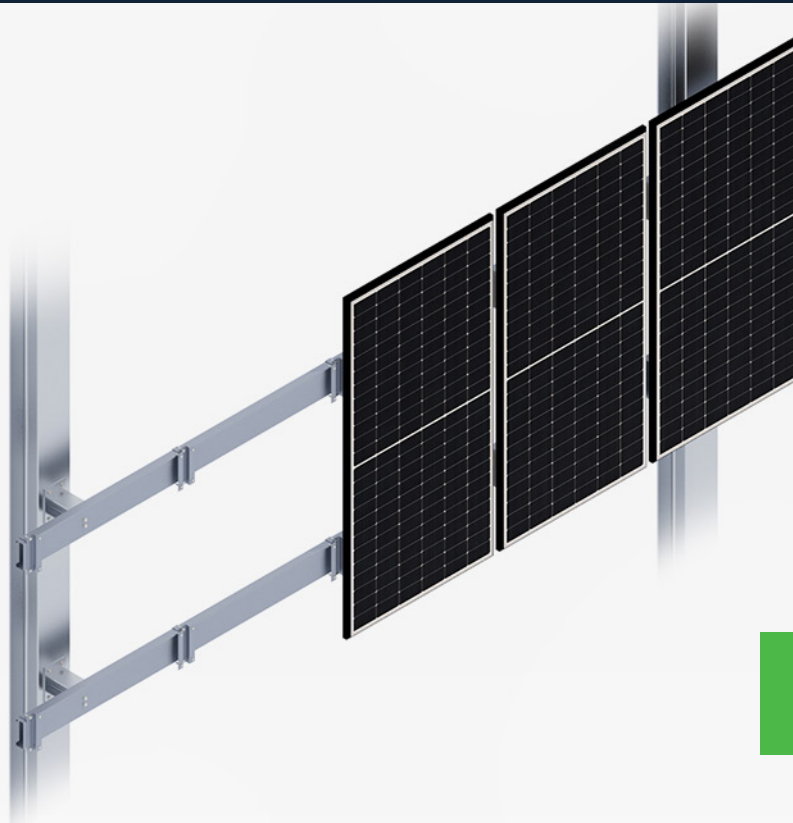
Vertical (V)

INSTALLATION

Long side (LA)

MOUNTING BASE

Sandwich panel, metal sheet (SP)



SEE ONLINE →

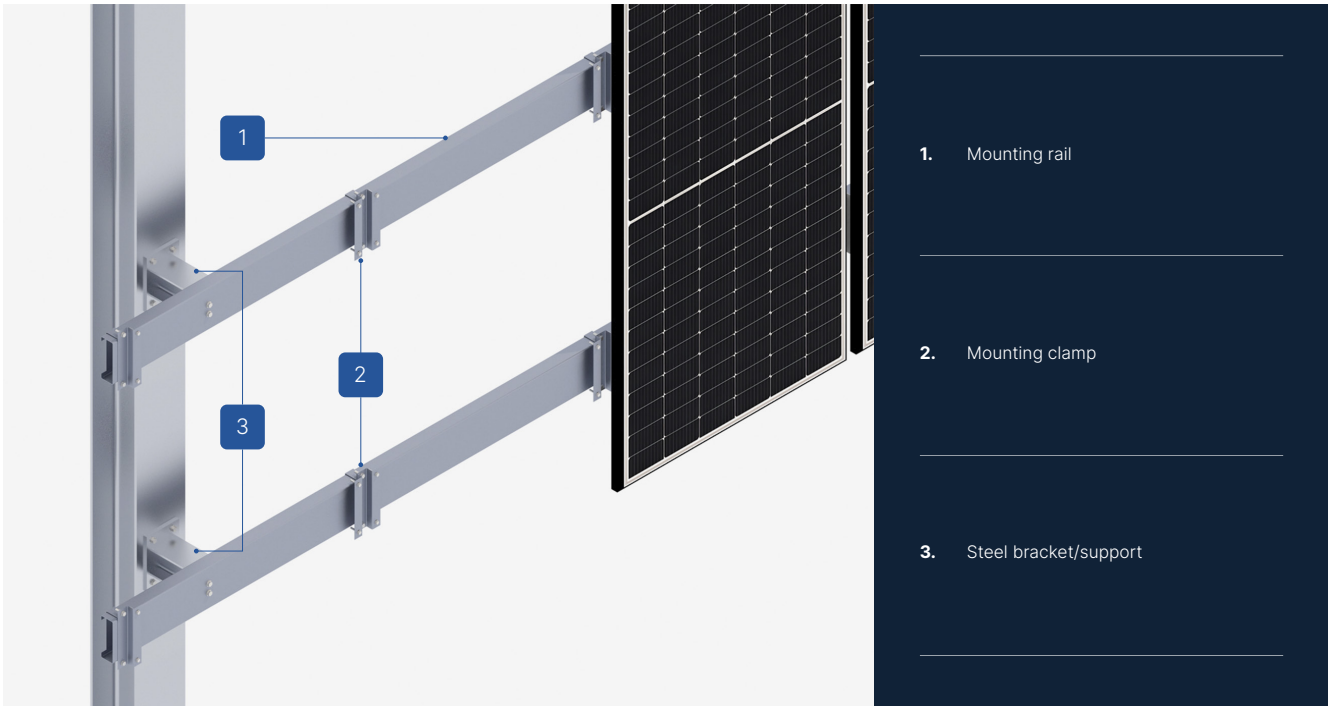


OPIS KONSTRUKCJI

- A multi-part facade structure made of Magnelis™ sheet, designed for facades constructed using sandwich panel or trapezoidal sheet technology.
- An invasive system composed of adjustable consoles, which are mounted to the facade using screws of appropriate length, and then to which profiles (on which PV modules, previously equipped in necessary mounts, are suspended) are attached.
- A universal mounting system composed of adjustable, telescopic elements, enabling the use of structures with modules of various power and sizes.
- A system designed for facades where the basis for the construction choice is the impossibility of applying installation mounting on the roof or ground.
- The structure has been designed to shorten the base assembly and, at the same time, make the number of mounting points to the facade as small as possible.

© At the customer's request, each installation using a structure is calculated by our Technical Department in terms of its load on the facade, as well as the method and number of points that constitute the basis for the installation of profiles, to which the modules are mounted.

Facade structures (FA)



- 1. Mounting rail
- 2. Mounting clamp
- 3. Steel bracket/support

**CHARACTERISTICS**

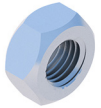
**FA-I-S/V/LA/SP**

<b>Destination</b>	Facades (FA)
<b>Type of construction</b>	Individual (US)
<b>Module orientation</b>	South (S)
<b>Module layout</b>	Vertical (V)
<b>How to install a PV module</b>	Long side (LA)
<b>Mounting base</b>	Sandwich panel, metal sheet (SP)
<b>Module type</b>	Standard/Bifacial
<b>Minimum number of PV modules</b>	1
<b>Standard clamps height (mm)</b>	35
<b>Standard clamps width (mm)</b>	5
<b>Maximum PV module length (mm)</b>	-
<b>Distribution</b>	Individual order

Facade structures (FA)

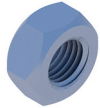


**LIST OF PARTS - BASE OF CONSTRUCTION**



Self-locking nut  
M8 DIN985 A2

**NSHM8A2**



Hexagonal nut  
M10 IE

**NM10Z**



Washer M10 300HV  
ISO7093-1 IE

**PSZM10Z**



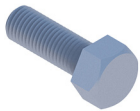
Round washer  
A2 8.4 DIN125A

**PPM8A2**



Hexagonal screw  
M8X20 DIN933 A2

**SM8X20A2**



Hexagonal screw  
M10X20 IE

**SM10X20Z**