



01

Facade structure

FA-US-S/V/LA/CCS

TYPE

Universal (US)

MODULE DIRECTION

South (S)

MODULE LAYOUT

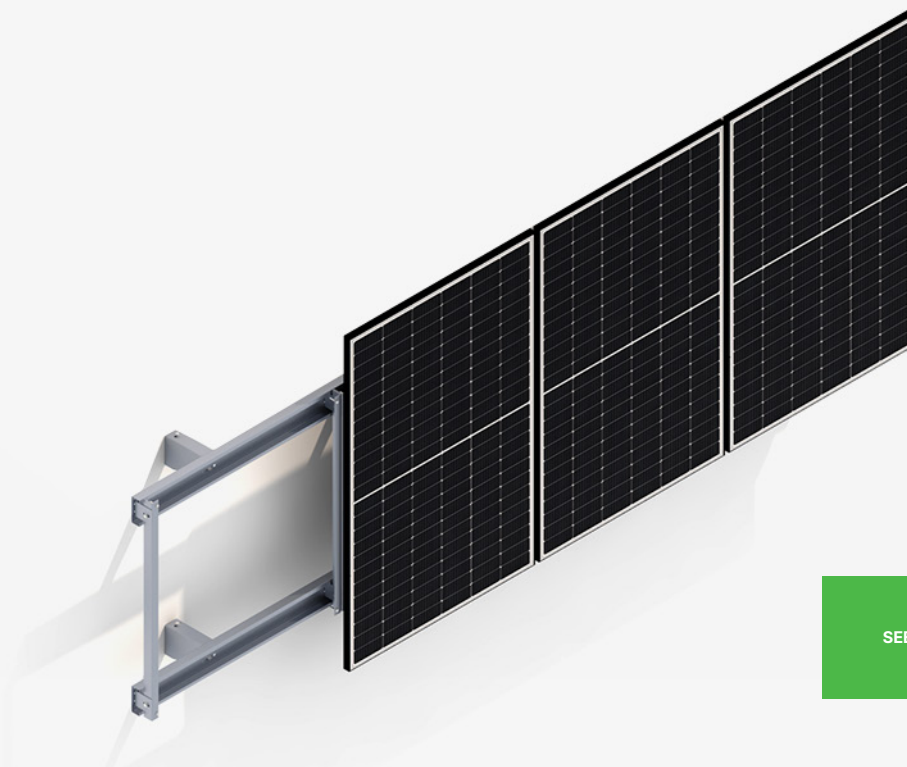
Vertical (V)

INSTALLATION

Long side (LA)

MOUNTING BASE

Concrete, ceramics, silicate (CCS)



SEE ONLINE →



DESCRIPTION

- A multi-part facade structure made of aerated concrete, ceramics or silicate and further insulated with wool or polystyrene.
- An invasive system composed of adjustable consoles, which are mounted to the facade using screws of appropriate length, and then to which profiles (on which PV modules, previously equipped in necessary mounts, are suspended) are attached.
- A universal mounting system composed of adjustable, telescopic elements, enabling the use of structures with modules of various power and sizes.
- The structure has been designed to shorten the base assembly and, at the same time, make the number of mounting points to the facade as small as possible.

© At the customer's request, each installation using a structure is calculated by our Technical Department in terms of its load on the facade, as well as the method and number of points that constitute the basis for the installation of profiles, to which the modules are mounted.



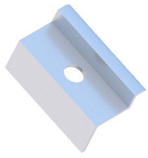
**CHARACTERISTICS**

**FA-US-S/V/LA/CCS**

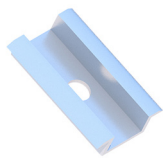
<b>Destination</b>	Facades (FA)
<b>Type of construction</b>	Universal (US)
<b>Module orientation</b>	South (S)
<b>Module layout</b>	Vertical (V)
<b>How to install a PV module</b>	Long side (LA)
<b>Mounting base</b>	Concrete, ceramics, silicate (CCS)
<b>Module type</b>	Standard/Bifacial
<b>Minimum number of PV modules</b>	1
<b>Standard clamps height (mm)</b>	35
<b>Standard clamps width (mm)</b>	5
<b>Maximum PV module length (mm)</b>	-
<b>Distribution</b>	Available in stock



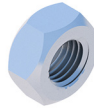
**LIST OF PARTS - BASE OF CONSTRUCTION**



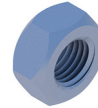
End clamp  
35  
Nature/Black  
**KLK50/35ALN**  
**KLK50/35ALCZ**



Middle clamp  
50 universal  
Nature/Black  
**KLSR50ALN**  
**KLSR50ALCZ**



Self-locking nut  
M8 DIN985 A2  
**NSHM8A2**



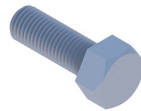
Hexagonal nut  
M10 IE  
**NM10Z**



Washer M10 300HV  
ISO7093-1 IE  
**PSZM10Z**



Allen screw  
M8X100 DIN912 A2  
**SIM8X100A2**



Hexagonal screw  
M10X20 IE  
**SM10X20Z**