




03

Single space multimodule carport

CP1-I-S/V/4/MULTI

TYPE	MODULE DIRECTION	MODULE LAYOUT	SUPPORTS NO.	NO. / WIDTH (MAX) OF PV MODULES
Individual (I)	South (S)	Vertical (V)	Four	Customized



SEE ONLINE → 

DESCRIPTION

- Universal mounting system built with adjustable and densely perforated beams, allowing for the use of structures for modules of different power and size.
- A four-support system in the shape of the letter V.
- A multipart construction made of Magnelis™ steel, designed for various types of car ramps and parking lots - with the need for additional ballasting.
- The applied screw system for mounting beams, latches, and posts does not require servicing, provided that the installation is carried out in accordance with the instructions.
- Excellent for building small home installations up to 10 kW.
- In the case of multi-space carports, a modular system has been applied, allowing for the assembly and connection of an unlimited number of segments.
- The system is designed for installations where the primary criterion for choosing the structure is the inability to place it on the roof of a building or industrial facility, or to build photovoltaic shelters serving as car charging stations.
- The possibility of using a hybrid system in which there is an option to attach the post/posts to prefabricated ballast blocks placed directly on the ground in areas where it is not possible to anchor the blocks in the ground to a specified depth.

© Upon the customer's request, every structure intended for production can be analyzed by our Technical Department regarding its installation in a specified wind and snow zone, as well as based on previously examined geotechnical conditions.

© The structure is designed for wind and snow zones specified as W1S2. To initiate production, a prepayment is required, the amount of which is specified in the offer.



1. Leg/support 1
2. Leg/support 2
3. Base of the construction
4. Leg/support 3
5. Latch
6. Purlin
7. Leg/support 4

**CHARACTERISTICS**

**CP1-I-S/V/4/MULTI**

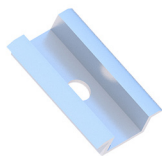
Type of substrate	Ground
Type of construction and installation method	Carport (CP), mounted to a prefabricated foundation using chemical anchors
Type of construction	Individual (I)
Module orientation	South (S)
Module layout	Vertical (V)
Number of PV modules:	Customized
Type of modules	Standard/Bifacial
Shape of the column	V-shaped
Does the construction require additional ballast?	No
Is it possible to use a hybrid solution (piling + ballast)?	No
Minimum number of modules on the construction	Customized
Height of standard clamps (mm)	35
Thickness of standard clamps (mm)	5
Maximum length of the PV module (mm)	-
Standard inclination	15°
Distribution method	Individual order



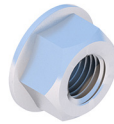
**LIST OF PARTS - BASE OF CONSTRUCTION**



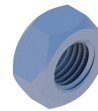
End clamp  
35  
Nature/Black  
**KLK50/35ALN**  
**KLK50/35ALCZ**



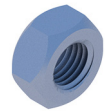
Middle clamp  
50 universal  
Nature/Black  
**KLSR50ALN**  
**KLSR50ALCZ**



Flange nut  
serrated  
M8 DIN6923 A2  
**NKM8A2**



Hexagonal nut  
M12 IE  
**NM12Z**



Hexagonal nut  
M16 IE  
**NM16Z**



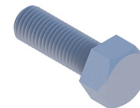
Washer M12 300HV  
ISO7093-1 IE  
**PSZM12Z**



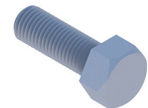
Washer M16 300HV  
ISO7093-1 IE  
**PSZM16Z**



Allen screw  
M8x100 DIN912 A2  
**SIM8x100A2**



Hexagonal screw  
M12x30 IE  
**SM12x30Z**



Hexagonal screw  
M16x30 IE  
**SM16x30Z**



Support frame



Purlin

**LIST OF PARTS - OTHER INSTALLATION ELEMENTS**



Foundation footing