



## 02 Double space carport

CP2-US-S/V/4/3x6

TYPE	MODULE DIRECTION	MODULE LAYOUT	SUPPORTS NO.	NO. / WIDTH (MAX) OF PV MODULES
Universal (US)	South (S)	Vertical (V)	Four	3x6 / 1200



SEE ONLINE →



### DESCRIPTION

- Universal mounting system built with adjustable and densely perforated beams, allowing for the use of structures for modules of different power and size.
- A four-support system in the shape of the letter V.
- A multipart construction made of Magnelis™ steel, designed for various types of car ramps and parking lots - with the need for additional ballasting.
- The applied screw system for mounting beams, latches, and posts does not require servicing, provided that the installation is carried out in accordance with the instructions.
- Excellent for building small home installations up to 10 kW.
- In the case of multi-space carports, a modular system has been applied, allowing for the assembly and connection of an unlimited number of segments.
- There is an option to use a hybrid system, where the poles can be attached to ready-made ballast blocks placed directly on the ground in places where it is not possible to sink the blocks to the necessary depth.

© Upon the customer's request, every structure intended for production can be analyzed by our Technical Department regarding its installation in a specified wind and snow zone, as well as based on previously examined geotechnical conditions.

© The structure is designed for wind and snow zones specified as W1S2. To initiate production, a prepayment is required, the amount of which is specified in the offer.



- 1. Leg/support 1
- 2. Leg/support 2
- 3. Base of the construction
- 4. Leg/support 3
- 5. Latch
- 6. Purlin
- 7. Leg/support 4

**CHARACTERISTICS**

**CP2-US-S/V/4/3x6**

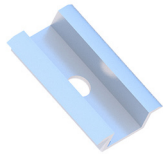
Type of substrate	Ground
Type of construction and installation method	Carport (CP), mounted to a prefabricated foundation using chemical anchors
Type of construction	Universal (US)
Module orientation	South (S)
Module layout	Vertical (V)
Number of PV modules:	3x6
Type of modules	Standard/Bifacial
Shape of the column	V-shaped
Does the construction require additional ballast?	No
Is it possible to use a hybrid solution (piling + ballast)?	No
Minimum number of modules on the construction	18 in case the width of the modules does not exceed 1200 mm
Height of standard clamps (mm)	35
Thickness of standard clamps (mm)	5
Maximum length of the PV module (mm)	-
Standard inclination	15°
Distribution method	Individual order



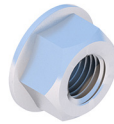
**LIST OF PARTS - BASE OF CONSTRUCTION**



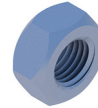
End clamp  
35  
Nature/Black  
**KLK50/35ALN**  
**KLK50/35ALCZ**



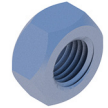
Middle clamp  
50 universal  
Nature/Black  
**KLSR50ALN**  
**KLSR50ALCZ**



Flange nut  
serrated  
M8 DIN6923 A2  
**NKM8A2**



Hexagonal nut  
M12 IE  
**NM12Z**



Hexagonal nut  
M16 IE  
**NM16Z**



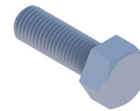
Washer M12 300HV  
ISO7093-1 IE  
**PSZM12Z**



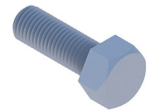
Washer M16 300HV  
ISO7093-1 IE  
**PSZM16Z**



Allen screw  
M8x100 DIN912 A2  
**SIM8x100A2**



Hexagonal screw  
M12x30 IE  
**SM12x30Z**



Hexagonal screw  
M16x30 IE  
**SM16x30Z**



Support frame



Purlin

**LIST OF PARTS - OTHER INSTALLATION ELEMENTS**



Foundation footing