



01 Single space carport

CP1-US-S/V/4/3x3/MAX-WIDTH1200

TYPE	MODULE DIRECTION	MODULE LAYOUT	SUPPORTS NO.	NO. / WIDTH (MAX) OF PV MODULES
Universal (US)	South (S)	Vertical (V)	Four	3x3 / 1200



SEE ONLINE →

DESCRIPTION

- Universal mounting system built with adjustable and densely perforated beams, allowing for the use of structures for modules of different power and size.
- A four-support system in the shape of the letter V.
- A multipart construction made of Magnelis™ steel, designed for various types of car ramps and parking lots - with the need for additional ballasting.
- The applied screw system for mounting beams, latches, and posts does not require servicing, provided that the installation is carried out in accordance with the instructions.
- Excellent for building small home installations up to 10 kW.
- In the case of multi-space carports, a modular system has been applied, allowing for the assembly and connection of an unlimited number of segments.
- The system is designed for installations where the primary criterion for choosing the structure is the inability to place it on the roof of a building or industrial facility, or to build photovoltaic shelters serving as car charging stations.
- The possibility of using a hybrid system in which there is an option to attach the post/posts to prefabricated ballast blocks placed directly on the ground in areas where it is not possible to anchor the blocks in the ground to a specified depth.

© Upon the customer's request, every structure intended for production can be analyzed by our Technical Department regarding its installation in a specified wind and snow zone, as well as based on previously examined geotechnical conditions.

© The structure is designed for wind and snow zones specified as W1S2. To initiate production, a prepayment is required, the amount of which is specified in the offer.



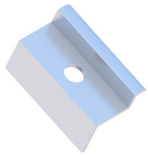
CHARACTERISTICS

CP1-US-S/V/4/3x3/MAX-WIDTH1200

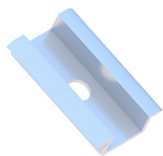
Type of substrate	Ground
Type of construction and installation method	Carport (CP), mounted to a prefabricated foundation using chemical anchors
Type of construction	Universal (US)
Module orientation	South (S)
Module layout	Vertical (V)
Number of PV modules:	3x3
Type of modules	Standard/Bifacial
Shape of the column	V-shaped
Does the construction require additional ballast?	No
Is it possible to use a hybrid solution (piling + ballast)?	No
Minimum number of modules on the construction	9 in case the width of the modules does not exceed 1200 mm
Height of standard clamps (mm)	35
Thickness of standard clamps (mm)	5
Maximum length of the PV module (mm)	-
Standard inclination	15°
Distribution method	Individual order



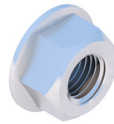
LIST OF PARTS - BASE OF CONSTRUCTION



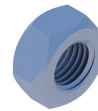
End clamp
35
Nature/Black
KLK50/35ALN
KLK50/35ALCZ



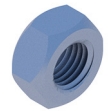
Middle clamp
50 universal
Nature/Black
KLSR50ALN
KLSR50ALCZ



Flange nut
serrated
M8 DIN6923 A2
NKM8A2



Hexagonal nut
M12 IE
NM12Z



Hexagonal nut
M16 IE
NM16Z



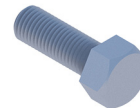
Washer M12 300HV
ISO7093-1 IE
PSZM12Z



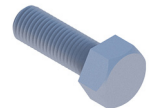
Washer M16 300HV
ISO7093-1 IE
PSZM16Z



Allen screw
M8x100 DIN912 A2
SIM8x100A2



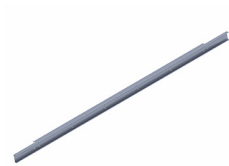
Hexagonal screw
M12x30 IE
SM12x30Z



Hexagonal screw
M16x30 IE
SM16x30Z



Support frame



Purlin

LIST OF PARTS - OTHER INSTALLATION ELEMENTS



Foundation footing