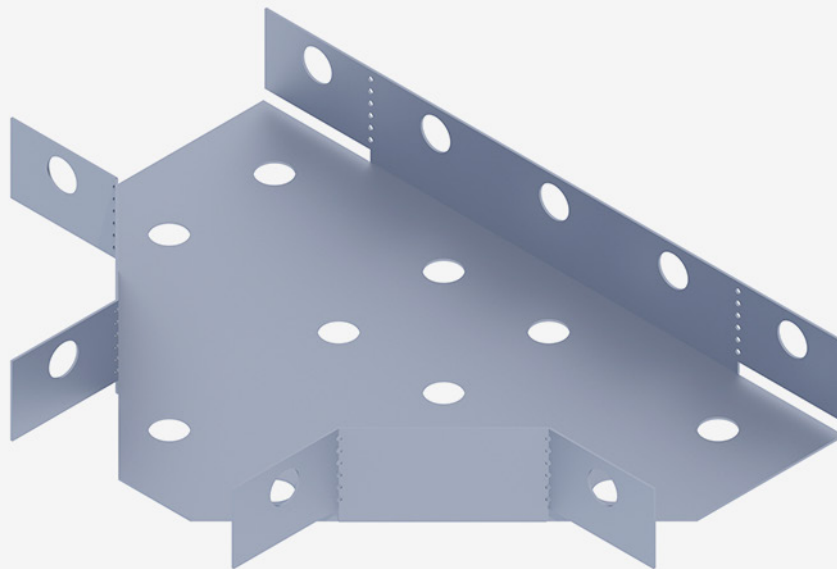




05

Three-way connectors

KD-KK-LT90-60×50
 KD-KK-LT90-100×50
 KD-KK-LT90-200×50



SEE ONLINE →



DESCRIPTION

Three-way connectos with width of 60, 100 and 200 mm complement our photovoltaic structures, forming a **complete system** designed for the construction of photovoltaic installations mounted on **roofs, grounds, and parking lots** - characterized not only by accessibility, but also **durability**, achieved through the use of high-quality steel resistant to corrosion in C3 environments, ensuring the required **corrosion resistance for a minimum of 10 years**.

- A universal mounting system, built with cable trays of varying widths and connecting elements, allowing for versatile installation.
- A multipart cable tray system, made of Magnelis™ steel, designed for various types of installations, mounted using our structures and beyond.
- Excellent for building small home installations up to 10 kW.
- The system is intended for installations, where the primary criterion is the need to install trays outside the building and in cases where a warranty period exceeding 10 years is required for C3 environments (in accordance with the warranty terms available on the website www.rbtnsolar.com).

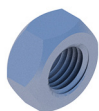
© Upon the customer's request, our Technical Department can create a specification for the installation of cable trays for a specific PV system, for which a construction diagram of our photovoltaic production has also been prepared.

© To initiate production, a prepayment is required, similar to the process for constructions produced for individual orders.

Cable trays (KD)



LIST OF PARTS - BASE OF CONSTRUCTION



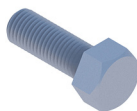
Hexagonal nut
M10 IE

NM10Z



Washer M10 300HV
ISO7093-1 IE

PSZM10Z



Hexagonal screw
M10X20 IE

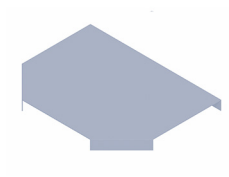
SM10X20Z

LIST OF PARTS - OTHER INSTALLATION ELEMENTS



Sheet metal screw
OC 5.5X25 EPDM

BLW55X25EPDMZ



Cover
W=60/100/200

RBTSOLAR-KD-KK-LTD90-60x50
RBTSOLAR-KD-KK-LTD90-100x50
RBTSOLAR-KD-KK-LTD90-200x50