



24

Screw-on structure

FR-S-US-EW/H/SA/MAX-LONG2100

TYPE

Universal (US)

MODULE DIRECTION

East-west (EW)

MODULE LAYOUT

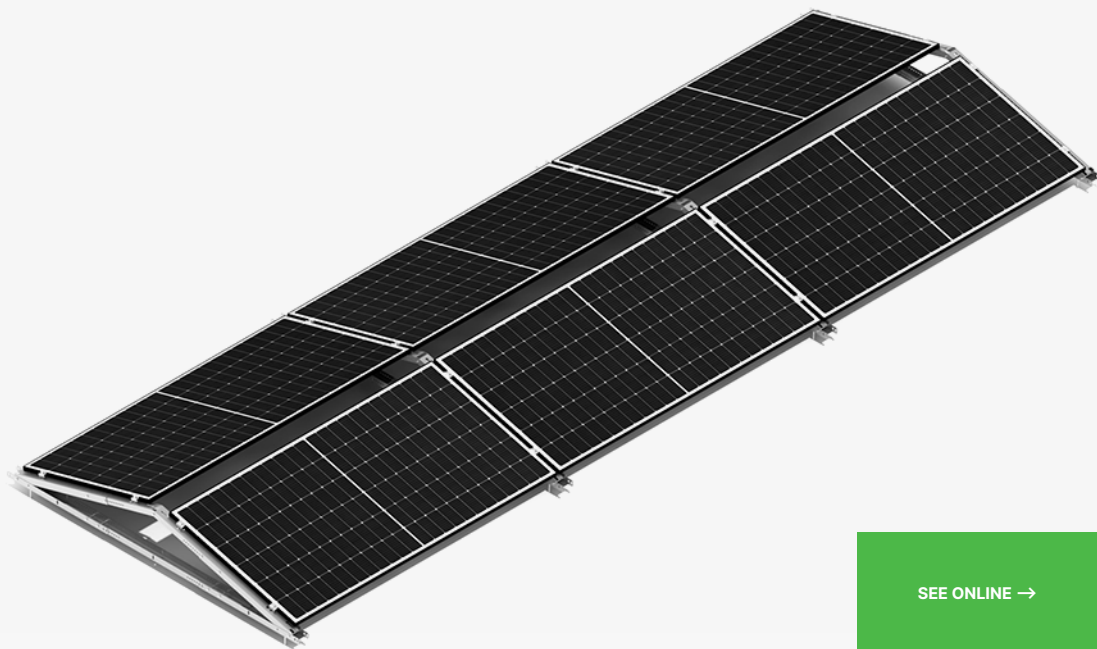
Horizontal (H)

INSTALLATION

Short side (SA)

MAX PV MODULE LENGTH

2100



SEE ONLINE →



DESCRIPTION

- Multi-part structure, made of Magnelis sheet, intended for flat or sloping roofs, without the need for additional ballasting and without the possibility of using a welded structure.
- Invasive installation system, by attaching to the roof substructure using the appropriate number of screws.
- Ready to be used for modules of various power and sizes, thanks to the use of two adjustable telescopic arms.

Flat roof structures (FR)



- 1. Lower telescope - long side
[RBTSOLAR-KDR_2_825](#)

- 2. Upper telescope - long side
[RBTSOLAR-KDT_3_825](#)

- 3. Upper telescope - long side
[RBTSOLAR-KDT_3_825](#)

- 4. Lower telescope - long side
[RBTSOLAR-KDR_2_825](#)

- 5. End telescope - base
[RBTSOLAR-KDWZP_6_880](#)

- 6. Middle telescope - base
[RBTSOLAR-KDWZL_7_1544](#)

- 7. End telescope - base
[RBTSOLAR-KDWZP_6_880](#)

CHARACTERISTICS

FR-S-US-EW/H/SA/MAX-LONG2100

Roof type	Flat roof (FR)
Method of mounting the structure on the roof	Screw-on (S)
Type of construction	Universal (US)
Module orientation	East-west (EW)
Module layout	Horizontal (H)
How to install a PV module	Short side (SA)
Application/substrate on which it is mounted	PVC membrane/bituminous membrane/sandwich panel/trapezoidal sheet
Method of assembly	The base of the structure is attached to the roof substructure
Does the structure require additional ballast?	No
Is it possible to apply the hybrid solution (weld + ballast)?	No
Approximate weight of the structure per 1m ² of installation without additional ballast (kg/m ²) ²	8,69
Purlin length (mm)	Without purlins
Wind brace length (mm)	Without wind guard
Maximum PV module length (mm) ³	2100
How to install the clamps	Clamps mounted to the triangle - key system
Method of distribution	Available in stock

¹ the proposed installation method for a given type of module may differ from the installation method provided by the PV module manufacturer, whose recommendations and recommendations determine the proper installation.

² weight calculated for a system of three modules in one row with the maximum dimensions for a given type of structure

³ the given maximum size of the module and the proposed method of its installation may differ from the installation method provided by the PV module manufacturer, whose recommendations and recommendations determine the proper installation

Flat roof structures (FR)

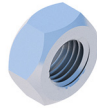


LIST OF PARTS - BASE OF CONSTRUCTION



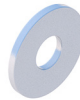
Universal triangle
East-west

RBTSOLAR-FR-US-EW



Self-locking nut
M8 DIN985 A2

NSHM8A2



Round washer
A2 8.4 DIN125A

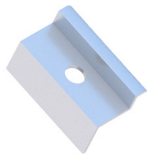
PPM8A2



Allen screw
M8X100 DIN912 A2

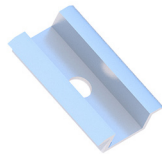
SIM8X100A2

LIST OF PARTS - OTHER INSTALLATION ELEMENTS



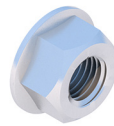
End clamp
30/32/35/40
Nature/Black

KLK50/30(32/35/40)ALN
KLK50/30(32/35/40)ALCZ



Middle clamp
50 universal
Nature/Black

KLSR50ALN
KLSR50ALCZ



Flange nut
serrated
M8 DIN6923 A2

NKM8A2



Allen screw
M8X35 DIN912 A2

SIM8X35A2



M10 double thread screw
200/250/300

RBTSOLAR-KD-DWUG200/250/300