



21

## Screw-on structure

FR-S-US-S/H/SA/MAX-LONG2100

**TYPE**

Universal (US)

**MODULE DIRECTION**

South (S)

**MODULE LAYOUT**

Horizontal (H)

**INSTALLATION**

Short side (SA)

**MAX PV MODULE LENGTH**

2100



SEE ONLINE →



### DESCRIPTION

- Multi-part structure, made of Magnelis sheet, intended for flat or sloping roofs, without the need for additional ballasting and without the possibility of using a welded structure.
- Invasive installation system, by attaching to the roof substructure using the appropriate number of screws.
- Ready to be used for modules of various power and sizes, thanks to the use of two adjustable telescopic arms.

ⓘ At the customer's request, each installation using a structure is calculated by our Technical Department in terms of its load for a given roof, the method of installation and the number of bases that must be mounted.

ⓘ Installation requires a wind deflector, which limits the effect of wind on the structure and ensures its rigidity.

Flat roof structures (FR)



- 1. Upper telescope - short side  
RBSOLAR-KDPT\_5\_365

---

- 2. Lower telescope - short side  
RBSOLAR-KDPT\_4\_350

---

- 3. Upper telescope - long side  
RBSOLAR-KDT\_3\_825

---

- 4. Lower telescope - long side  
RBSOLAR-KDR\_2\_825

---

- 5. Base south  
RBSOLAR-KDPP\_1\_1560

CHARACTERISTICS

FR-S-US-S/H/SA/MAX-LONG2100

Roof type	Flat roof (FR)
Method of mounting the structure on the roof	Screw-on (S)
Type of construction	Universal (US)
Module orientation	South (S)
Module layout	Horizontal (H)
How to install a PV module	Short side (SA)
Application/substrate on which it is mounted	PVC membrane/bituminous membrane/sandwich panel/trapezoidal sheet
Method of assembly	The base of the structure is attached to the roof substructure
Does the structure require additional ballast?	No
Is it possible to apply the hybrid solution (weld + ballast)?	Yes - possibility of additional ballasting of the wind tower
Approximate weight of the structure per 1m <sup>2</sup> of installation without additional ballast (kg/m <sup>2</sup> ) <sup>2</sup>	5,15
Purlin length (mm)	Without purlins
Wind brace length (mm)	2175
Maximum PV module length (mm) <sup>3</sup>	2100
How to install the clamps	Clamps mounted to the triangle - key system
Method of distribution	Available in stock

<sup>1</sup> the proposed installation method for a given type of module may differ from the installation method provided by the PV module manufacturer, whose recommendations and recommendations determine the proper installation.

<sup>2</sup> weight calculated for a system of three modules in one row with the maximum dimensions for a given type of structure

<sup>3</sup> the given maximum size of the module and the proposed method of its installation may differ from the installation method provided by the PV module manufacturer, whose recommendations and recommendations determine the proper installation

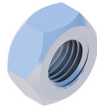


**LIST OF PARTS - BASE OF CONSTRUCTION**



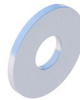
Universal triangle  
South

**RBTSOLAR-FR-US-S**



Self-locking nut  
M8 DIN985 A2

**NSHM8A2**



Round washer  
A2 8.4 DIN125A

**PPM8A2**



Allen screw  
M8X100 DIN912 A2

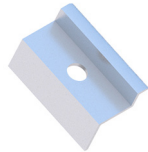
**SIM8X100A2**

**LIST OF PARTS - OTHER INSTALLATION ELEMENTS**



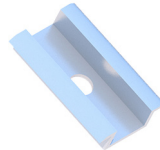
Sheet metal screw  
OC 5.5X25 EPDM

**BLW55X25EPDMZ**



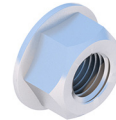
End clamp  
30/32/35/40  
Nature/Black

**KLK50/30(32/35/40)ALN**  
**KLK50/30(32/35/40)ALCZ**



Middle clamp  
50 universal  
Nature/Black

**KLRS50ALN**  
**KLRS50ALCZ**



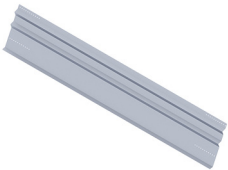
Flange nut  
serrated  
M8 DIN6923 A2

**NKM8A2**



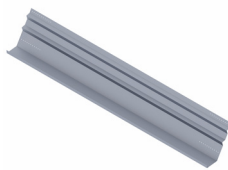
Allen screw  
M8X35 DIN912 A2

**SIM8X35A2**



Windchest  
South support  
L=2175/2355/2703mm

**RBTSOLAR-KD-W-2175/2355/2703**



Ballast wind shelter  
South support  
L=2175/2355/2703mm

**RBTSOLAR-KD-WB-2175/2355/2703**



M10 double thread screw  
200/250/300

**RBTSOLAR-KD-DWUG200/250/300**