



02

Welded structure

FR-W-US-S/H/LAZ/MAX-LONG2100
FR-W-US-S/H/LAZ/MAX-LONG2300
FR-W-US-S/H/LAZ/MAX-LONG2500

TYPE

Universal (US)

MODULE DIRECTION

South (S)

MODULE LAYOUT

Horizontal (H)

INSTALLATION

Long side (LAZ)

MAX PV MODULE LENGTH

2100 / 2300 / 2500



SEE ONLINE →



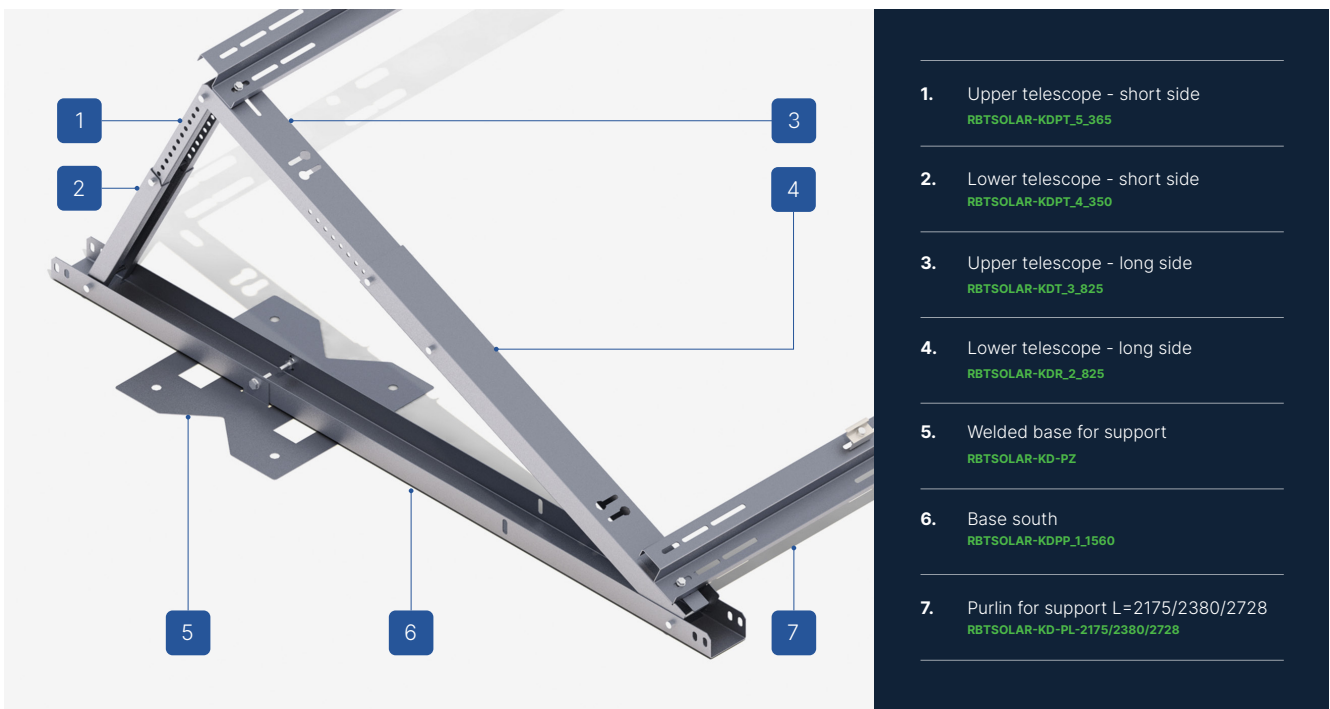
DESCRIPTION

- Multi-part structure, made of Magnelis™ sheet metal, intended for flat roofs, without the need additional ballast.
- Created with the participation of a specialist in the installation of membrane coverings.
- Its unique shape has been designed to significantly reduce assembly time and maximize the force necessary to remove the base.
- Non-invasive assembly with welding technology using the, so called, leister (in the case of PVC) or a gas burner (in the case of bitumen felt).
- High durability of the welded system is confirmed by specialized laboratory tests.
- Ready to be used for modules of various power and sizes, thanks to the use of two adjustable telescopic arms.
- Only one welded base per support is required for proper installation.
- Optionally - a hybrid system that allows the base to be welded and at the same time to load the wind deflector with ballast (in roof areas particularly exposed to wind suction).
- In case of mounting PV modules in a horizontal arrangement, an additional element are ZET profiles with bean holes, to which the modules are mounted using clamps and an M8 Allen screw.

ⓘ At the customer's request, each installation using a structure is calculated by our Technical Department in terms of its load for a given roof, the method of installation and the number of bases that must be welded to the membrane.

ⓘ Installation requires a wind deflector, which limits the effect of wind on the structure and ensures its rigidity.

Flat roof structures (FR)



- 1. Upper telescope - short side
RBTSOLAR-KDPT_5_365

- 2. Lower telescope - short side
RBTSOLAR-KDPT_4_350

- 3. Upper telescope - long side
RBTSOLAR-KDT_3_825

- 4. Lower telescope - long side
RBTSOLAR-KDR_2_825

- 5. Welded base for support
RBTSOLAR-KD-PZ

- 6. Base south
RBTSOLAR-KDPP_1_1560

- 7. Purlin for support L=2175/2380/2728
RBTSOLAR-KD-PL-2175/2380/2728

CHARACTERISTICS

FR-W-US-S/H/LAZ

Roof type	Flat roof (FR)
Method of mounting the structure on the roof	Welded (W)
Type of construction	Universal (US)
Module orientation	South (S)
Module layout	Horizontal (H)
How to install a PV module	Long side (LAZ)
Application/substrate on which it is mounted	PVC membrane/bituminous membrane
Method of assembly	The base of the structure is welded to the roof surface
Does the structure require additional ballast?	No
Is it possible to apply the hybrid solution (weld + ballast)?	Yes - possibility of additional ballasting of the wind tower
How to install the clamps	Clamps mounted to purlins - bean system
Method of distribution	Available in stock

	MAX-LONG2100	MAX-LONG2300	MAX-LONG2500
Approximate weight of the structure per 1m2 of installation without additional ballast (kg/m2) ²	9,76	8,54	7,26
Purlin length (mm)	2175	2380	2728
Wind brace length (mm)	2175	2355	2703
Maximum PV module length (mm) ³	2100	2300	2500

¹ the proposed installation method for a given type of module may differ from the installation method provided by the PV module manufacturer, whose recommendations and recommendations determine the proper installation.

² weight calculated for a system of three modules in one row with the maximum dimensions for a given type of structure

³ the given maximum size of the module and the proposed method of its installation may differ from the installation method provided by the PV module manufacturer, whose recommendations and recommendations determine the proper installation

Flat roof structures (FR)

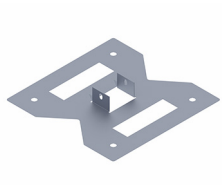


LIST OF PARTS - BASE OF CONSTRUCTION



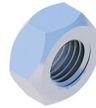
Universal triangle
South

RBTSOLAR-FR-US-S



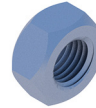
Welded base
for support

RBTSOLAR-KD-PZ



Self-locking nut
M8 DIN985 A2

NSHM8A2



Hexagonal nut
M10 IE

NM10Z



Washer M10 300HV
ISO7093-1 IE

PSZM10Z



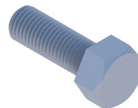
Round washer
A2 8.4 DIN125A

PPM8A2



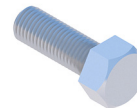
Allen screw
M8X100 DIN912 A2

SIM8X100A2



Hexagonal screw
M10X20 IE

SM10X20Z



Hexagonal screw
M8X20 DIN933 A2

SM8X20A2



Purlin for support
L=2175/2380/2728

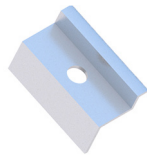
RBTSOLAR-KD-PL-2175/2380/2728

LIST OF PARTS - OTHER INSTALLATION ELEMENTS



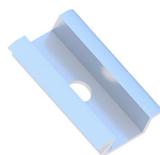
Sheet metal screw
OC 5.5X25 EPDM

BLW55X25EPDMZ



End clamp
30/32/35/40
Nature/Black

KLK50/30(32/35/40)ALN
KLK50/30(32/35/40)ALCZ



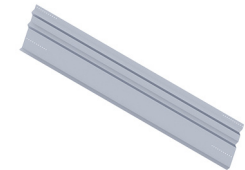
Middle clamp
50 universal
Nature/Black

KLRS50ALN
KLRS50ALCZ



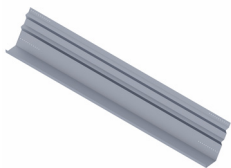
Allen screw
M8X35 DIN912 A2

SIM8X35A2



Windchest
South support
L=2175/2355/2703mm

RBTSOLAR-KD-W-2175/2355/2703



Ballast wind shelter
South support
L=2175/2355/2703mm

RBTSOLAR-KD-WB-2175/2355/2703